



Westbourne Park Road
Notting Hill, W11

CHESTERTONS





A beautifully refurbished two-bedroom split level flat with a large garden set over the raised and lower ground floors of an elegant period building in the heart of Notting Hill. Finished to an exceptional standard throughout, the property blends contemporary design with timeless period character.

The raised ground floor features two generous double bedrooms and two stylish bathrooms (one en suite). On the garden level, there is an impressive modern kitchen with marble worktops, and an open plan dining and reception area finished with elegant wooden flooring throughout, creating a seamless flow of space and light. French doors open onto a superb 43-foot private garden, complete with an outdoor kitchen setup, perfect for entertaining. There is also a versatile study/guest bedroom, guest WC, and convenient dual access through the garden to Elgin Mews.

Ideally located just moments from the vibrant bars and restaurants of Portobello Road (0.1 miles) and the shops on Westbourne Grove (0.5 miles), it is also within easy reach of Ladbroke Grove station (0.1 miles) and Notting Hill Gate station (0.8 miles)

- Beautifully refurbished to a very high standard
- Elegant wooden flooring throughout
- Open-plan kitchen with marble worktops
- 43ft private garden with outdoor kitchen setup and dual access via Elgin Mews
- Two double bedrooms, two bathrooms (one en

£8,000 pcm

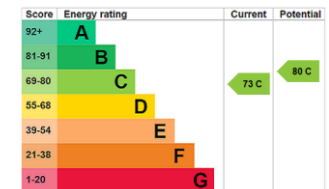
Additional tenant charges apply (fees apply to non-AST tenancies only)

Tenancy Agreement Fee: £300

References per Tenant/Guarantor: £60

Inventory check (approx. £100 – £250 inc. VAT)

[chestertons.co.uk/property-to-rent/applicable-fees](https://www.chestertons.co.uk/property-to-rent/applicable-fees)



Minimum Term: 12 months
Deposit Required: £11,076.92
Local Authority: Kensington and Chelsea
Council Tax Band: E
EPC Rating: C

Chestertons Notting Hill Lettings

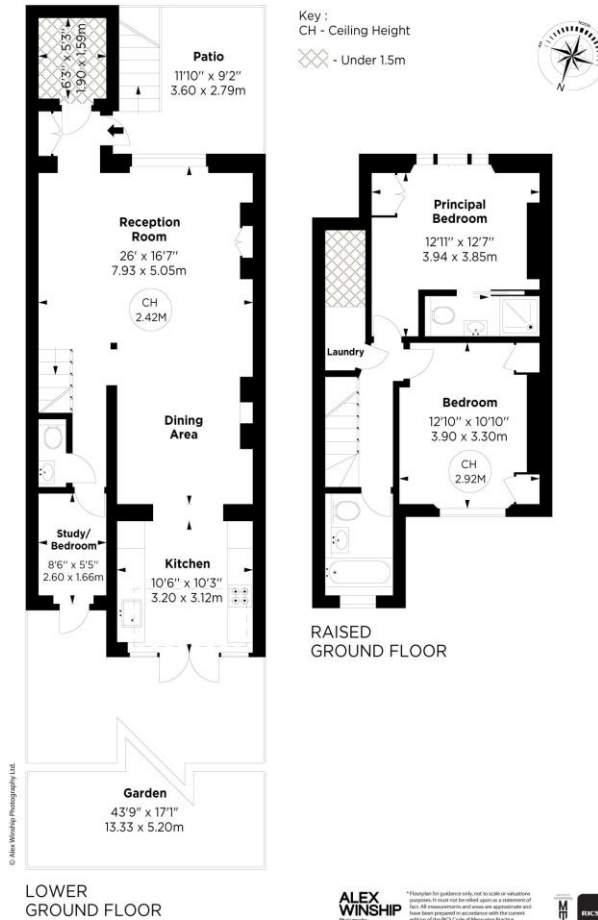
30 Ledbury Road
 Notting Hill
 London
 W11 2AB

nottinghilllettingsusers@chestertons.co.uk
 02030408588

Westbourne Park Road, W11

APPROX. GROSS INTERNAL AREA *
1103 Sq Ft - 102.47 Sq M
(Including 4.71 Sq M of Under 1.5m Area)

This floorplan is for GUIDANCE ONLY and NOT FOR VALUATION purposes.



ALEX WINSHIP Photography

*Figures for ground only and for cubic volume purposes. To find out further open a statement of fact. All measurements and area calculations and have been prepared in accordance with the current edition of the BS Code of Measuring Practice.

MICN Certified Property Measurer

Chesterton UK Services Limited trading as Chestertons for themselves and for the vendor of this property whose agents they are, give notice that (i) these particulars do not constitute any part of an offer or contract, (ii) all statements contained within these particulars are made without responsibility on the part of Chestertons or the vendor, (iii) whilst made in good faith, none of the statements contained within these particulars are to be relied upon as a statement or representation of fact, (iv) any intending purchasers must satisfy themselves by inspection or otherwise as to the correctness of each of the statements contained within these particulars, (v) the vendor does not make or give either Chestertons or any person in their employment any authority to make or give representation or warranty whatsoever in relation to this property. Wide angle lenses may be used. ©Copyright Chestertons | Chesterton Global Ltd | Registered Office 40 Connaught Street, Hyde Park, London W2 2AB Registered Company Number 05334580.



This paper is 100% recyclable