



Helens Close, Upwood Huntingdon
£525,000 **Freehold**

**Sharman
Quinney**

Key Features



- Spacious 16 Foot Dual Aspect Lounge
- Family Bathroom with Four-Piece Suite
- Partially Converted Double Garage
- Driveway Providing Off-Road Parking for Multiple Cars
- Downstairs Cloakroom

Ground Floor

Entrance Hall

Leading to;

Lounge

Dual aspect windows with French Doors leading to the Garden.

Dining Room

Multifunctional room with window to front.

Cloakroom

Fitted with a two-piece suite and comprising of a wash hand basin, low-level-WC and window to side.



Study

Multifunctional room with window to side.

Kitchen/Breakfast Room

Fitted with a matching range of base and eye-level units with window to rear and French Doors leading to the Garden.

Utility Room

Fitted with a matching range of base and eye-level units with side door.

First Floor

Master Bedroom

Two built-in wardrobes with window to rear and side and leading to;

En-Suite

Recently renovated and fitted with a three-piece suite, and comprising of a shower cubicle, wash hand basin, low-level-WC and skylight.

Bedroom 2

Dual aspect window to front and rear.

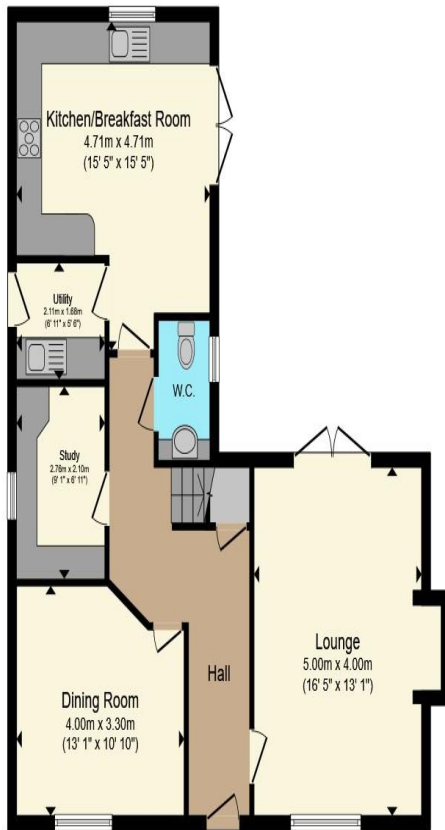
Bedroom 3

Window to front.

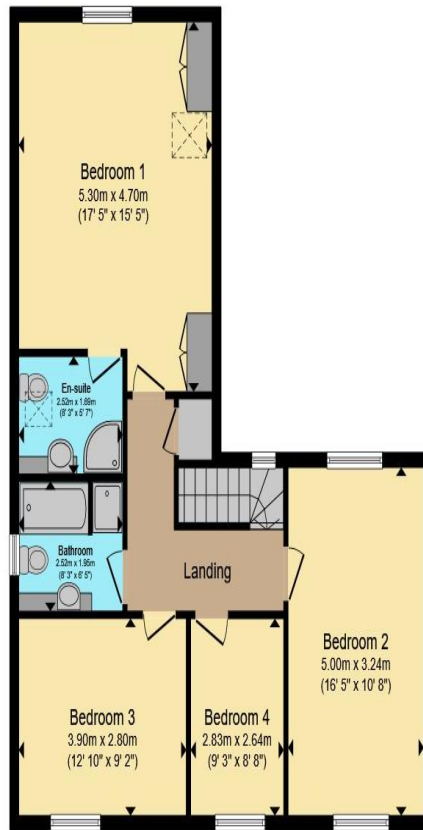
Family Bathroom

Fitted with a four-piece suite, and comprising of a shower cubicle, bath, wash hand basin, low-level-WC and window to side.

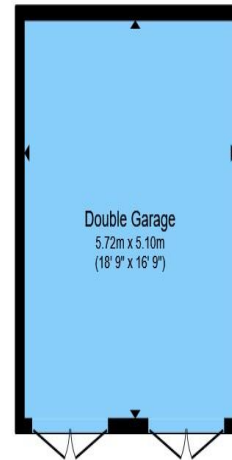




Ground Floor



First Floor



Garage

Total floor area 185.1 m² (1,992 sq.ft.) approx

This floor plan is for illustrative purposes only. It is not drawn to scale. Any measurements, floor areas (including any total floor area), openings and orientation are approximate. No details are guaranteed, they cannot be relied upon for any purpose and they do not form part of any agreement. No liability is taken for any error, omission or misstatement. A party must rely upon its own inspection(s). Powered by www.propertybox.io

**Sharman
Quinney**

Bedroom 4
Window to front.

Outside

The front of the property offers a large gravelled driveway providing parking for multiple cars leading onto the Double Garage with electric vehicle charging point.

The private rear enclosed garden offers a secluded decked seating area with Pergola over the top, spacious paved seating area, laid lawn to rear with the addition of mature trees and shrubbed boarder.

Double Garage

Fully insulated with vast power sockets, lighting and two doors to front. The Double Garage has been partially converted into a spacious Home Gym but offers an additional versatile space.

To view this property call Sharman Quinney on:
01487 710345

Selling your property?

Contact us to arrange a **FREE** home valuation.

 01487 710345

 17 Great Whyte, Ramsey, HUNTINGDON,
Cambridgeshire, PE26 1HG

 ramsey@sharmanquinney.co.uk

 www.sharmanquinney.co.uk



 SCAN ME



Sharman Quinney Holdings Limited is registered in England and Wales under company number 4174227, Registered Office is Cumbria House, 16-20 Hockliffe Street, Leighton Buzzard, Bedfordshire, LU7 1GN. VAT Registration Number is 500 2481 05.

1: These particulars do not constitute part or all of an offer or contract. 2: The measurements indicated are supplied for guidance only and as such must be considered incorrect. 3: Potential buyers are advised to recheck the measurements before committing to any expense. 4: Sharman Quinney has not tested any apparatus, equipment, fixtures, fittings or services and it is the buyers interests to check the working condition of any appliances. 5: Sharman Quinney has not sought to verify the legal title of the property and buyers must obtain verification from their legal representative. 6: Intending purchasers will be asked to produce identification documentation at a later stage and we would ask your co-operation in order that there will be no delay in agreeing the sale. Ref: RAM204728 - 0001

