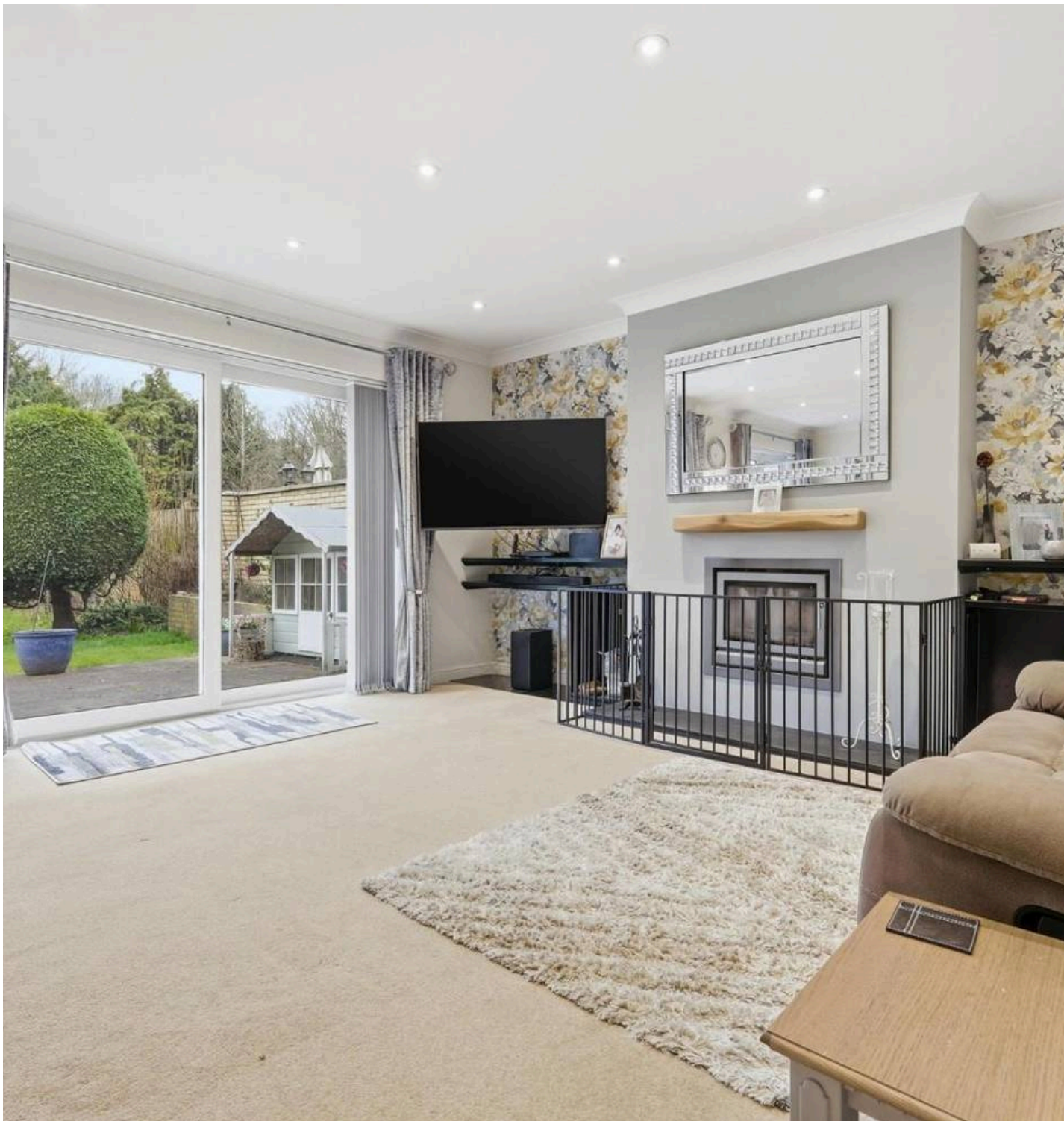




Conifers Avenue Road, Hoddesdon  
Hoddesdon

Fixed Price £750,000



## Conifers Avenue Road

Hoddesdon

Occupying a highly sought-after position within a private cul-de-sac and close to the attractive recreational spaces of Lee Valley Park, this exceptional and recently converted chalet-style bungalow offers over 2,250 Sq. ft of beautifully presented and versatile accommodation, ideal for modern family living. The property also benefits from convenient access to the historic market town of Hoddesdon and is within easy driving distance of Broxbourne railway station and Rye House railway station, providing excellent transport links.

- Spacious Kitchen/Diner
- Circa 95 ft Westerly Facing Rear Garden
- Broxbourne Station 0.9 Miles Away
- Carriage Sweeping Driveway For Up To Five Vehicles
- Formal Reception Room
- Substantial Detached Chalet Bungalow
- Five Bedrooms/Three Bathrooms
- Detached Garage

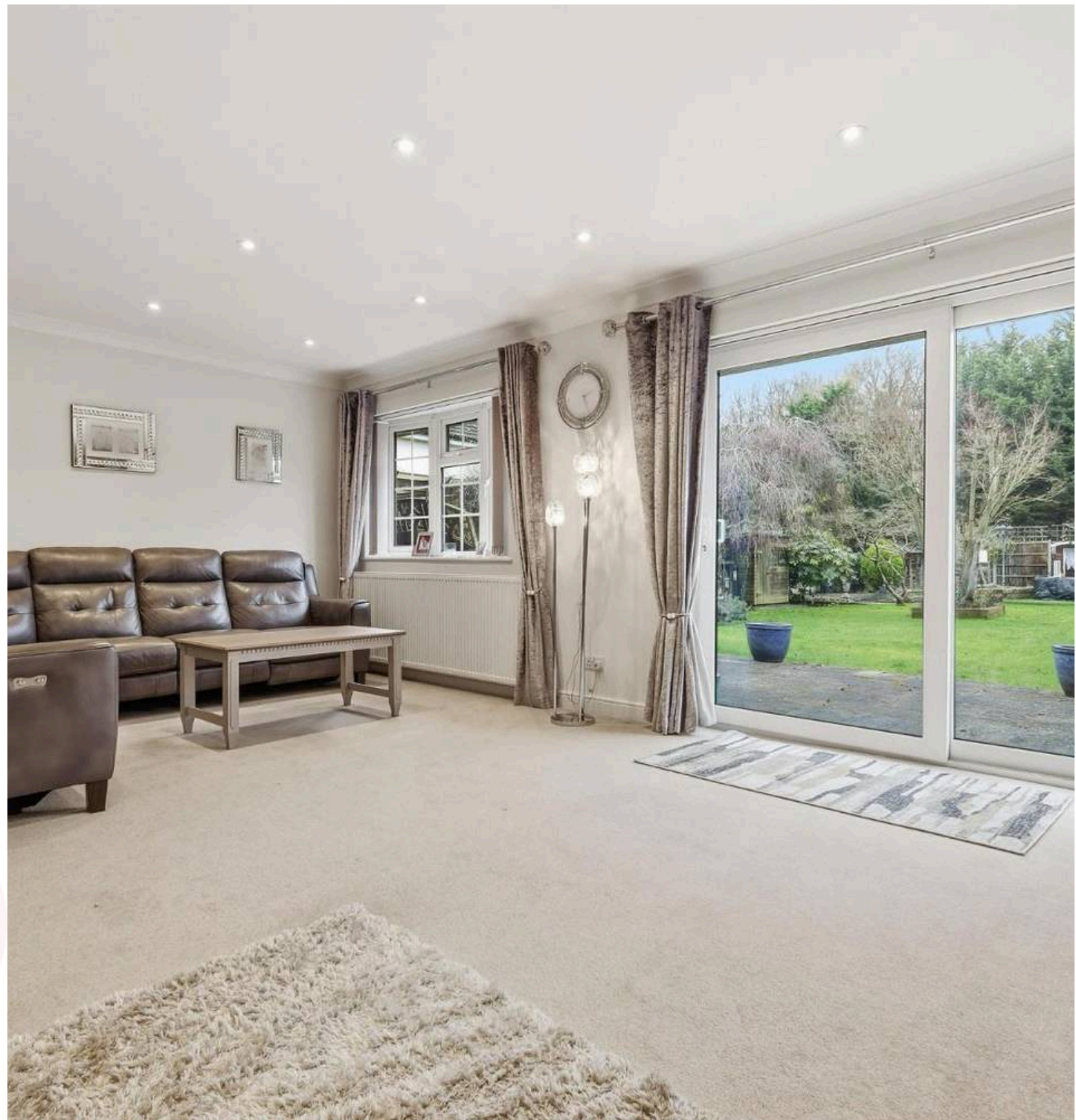


Internally, the property is presented to an excellent standard throughout. The spacious ground floor accommodation is centred around a welcoming entrance hall providing access to a generous lounge, separate dining room, contemporary kitchen, utility room and additional versatile rooms suitable for bedrooms or study space. The impressive lounge is light and airy, featuring patio doors opening onto the rear garden and a striking chimney breast with log burner as its focal point.

The well-appointed kitchen overlooks the garden and is fitted with a range of wall and base units complemented by contrasting work surfaces and an induction hob. A separate utility room provides additional practicality with a stainless steel sink, plumbing for appliances and further access to the garden and front lobby. The ground floor layout offers excellent flexibility for family living, guest accommodation or home working.

To the first floor, a spacious landing leads to three well-proportioned bedrooms, including a superb principal bedroom overlooking the rear garden with its own en-suite facilities. A particularly generous second bedroom benefits from a dual aspect allowing for an abundance of natural light, while a further bedroom and a modern shower room with wash hand basin and WC complete the accommodation. A second floor level provides an additional bedroom, ideal as a guest room, office or hobby space.

Externally, the property continues to impress. The rear garden is a real feature, extending to approximately 95ft and mainly laid to lawn with a variety of mature trees and shrubs. A full-width patio area with pergola provides an ideal setting for al fresco dining and entertaining. The property also benefits from a detached garage/workshop and a

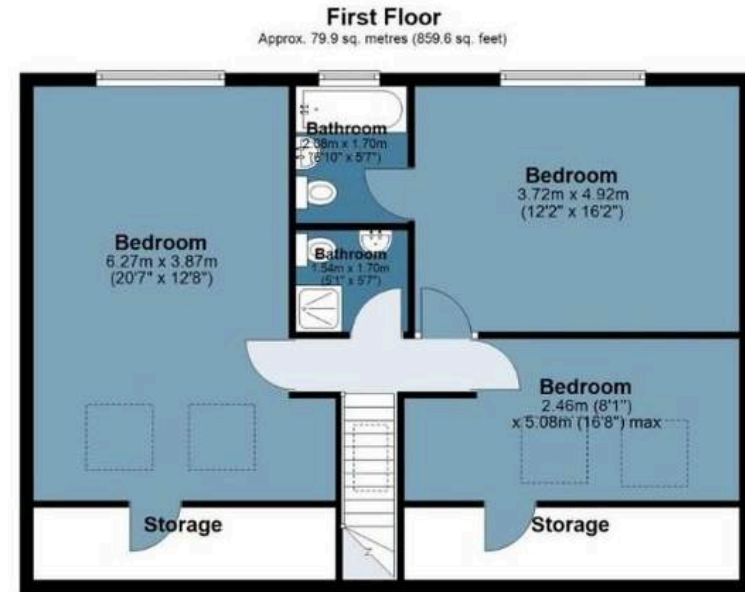






# Conifers Avenue Rd

Approx. Gross Internal Area 210.3 sq. metres (2263.1 sq. feet)



Measurements are approximate and for illustration purposes only. While we do not doubt the accuracy and completeness, we advise you conduct a careful independent assessment of the property to determine monetary value

# FROM EAST LONDON ENERGY TO WEST ESSEX EASE

## We Make Moving Home Easy.

At Butler and Stag, we do more than just connect London to West Essex – we make the move seamless. With offices spanning from vibrant East London to the tranquillity of West Essex, we understand the nuances of each area and the journey people take between them. Our marketing goes beyond standard listings, showcasing every property with precision, creativity, and reach that others simply can't match. Coupled with an unparalleled attention to detail, from first enquiry to final move-in, we ensure every client and customer feels informed, supported, and confident. Simply put, we do the little things that make a big difference, setting us apart in every step of the property experience.



LONDON   STRATFORD   SOUTH WOODFORD   BUCKHURST HILL   LOUGHTON   EPPING   BEYOND

# Like what you see? Let's talk

Book your **FREE** valuation now



01992 667666

theydon@butlerandstag.com

4 Forest Drive, Theydon Bois, CM16 7EY

[butlerandstag.uk](https://www.butlerandstag.uk)

IMPORTANT NOTICE - These particulars have been prepared in good faith and they are not intended to constitute part of an offer or contract. We have not performed a structural survey on this property and the services, appliances and specific fittings have not been tested. All photographs, measurements, floor plans and distances referred to are given as a guide and should not be relied upon.

BUTLER & STAG

