

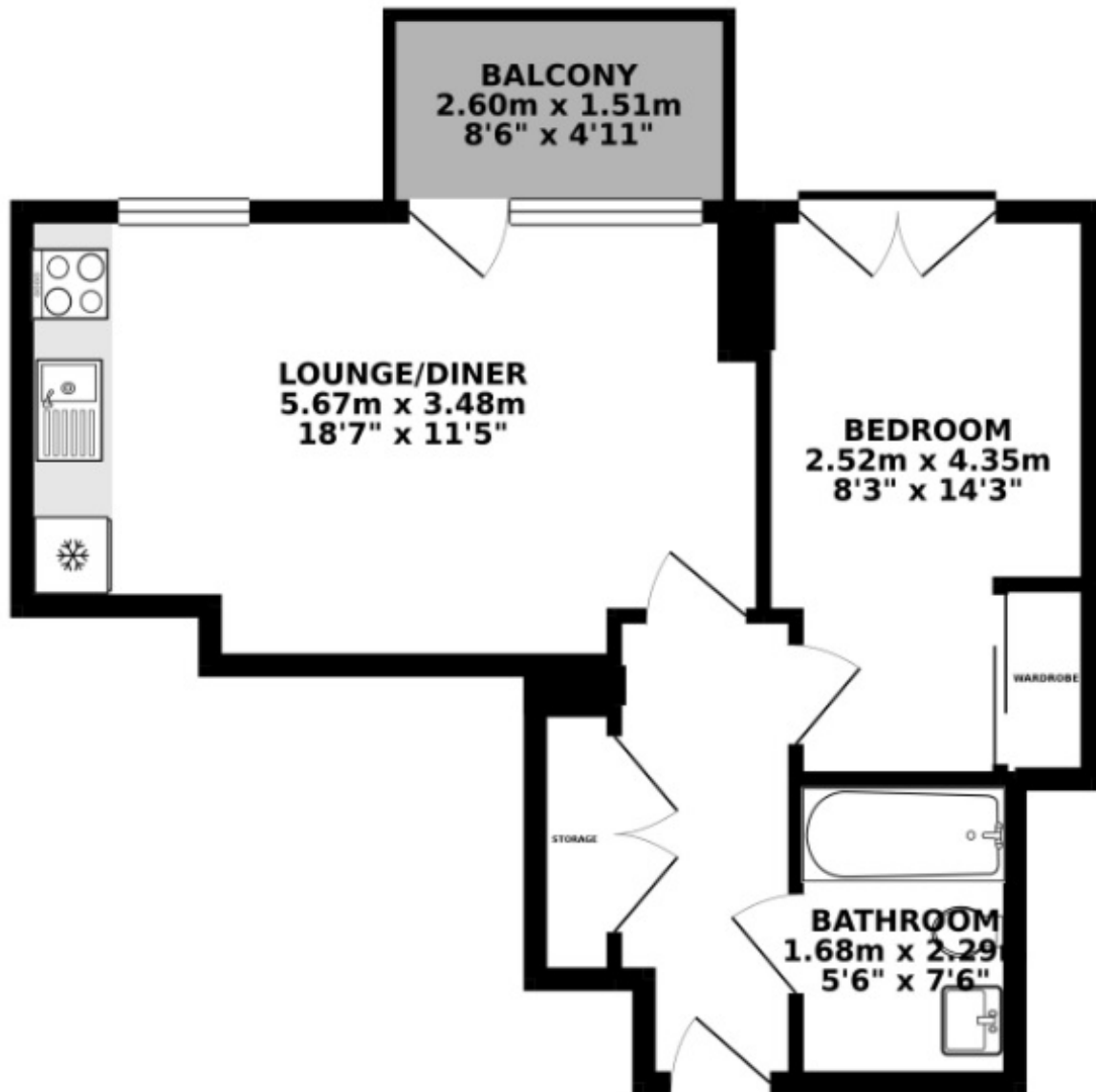


4 BALTIMORE WHARF, E14

£425,000

A one bedroom apartment situated on the sixth floor of the Baltimore Wharf development. This property offers a bright, open plan kitchen/reception with built in appliances and access to the private balcony overlooking the courtyard, a double bedroom with built in storage and a modern family bathroom.

- One Double Bedroom
- Private Balcony
- Swimming Pool
- Gym
- 24hr Concierge
- Built In Storage



TOTAL FLOOR AREA : 43 sq. m. (462.84 sq. ft.) approx.

Whilst every attempt has been made to ensure the accuracy of the floorplan contained here, measurements of doors, windows, rooms and any other items are approximate and no responsibility is taken for any error, omission or mis-statement. This plan is for illustrative purposes only and should be used as such by any prospective purchaser. The services, systems and appliances shown have not been tested and no guarantee as to their operability or efficiency can be given.
Made with Metropix ©2019



LiFE RESIDENTIAL

36 Millharbour, London, E14

9JS

Sales: 020 3668 1033

Lettings: 020 3668 1030

Energy Rating: B. We aim to make our particulars both accurate and reliable. However they are not guaranteed; nor do they form part of an offer or contract. If you require clarification on any points then please contact us, especially if you're traveling some distance to view. Please note that appliances and heating systems have not been tested and therefore no warranties can be given as to their good working order.