



Campion Terrace | | London | NW2 6QN

£595,000



**LEAFY  
ESTATES**

## Key features

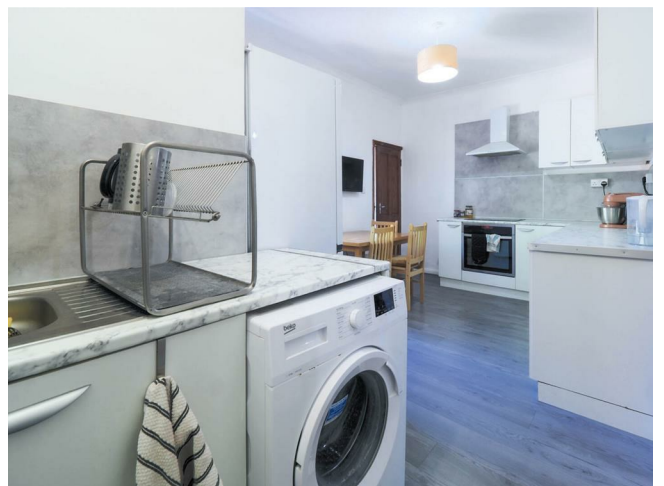
- Four bedroom family home
- Contemporary Kitchen/Diner
- Downstairs W.C.
- Gas central heating
- Chain Free
- Excellent transport links into Central London
- Close to local amenities

## Description

Charming end of terrace property with 4 bedrooms, two-bathroom situated in the sought-after area of London NW2.



## Directions



Charming end of terrace property with 4 bedrooms and two-bathrooms, situated in the sought-after area of London NW2.

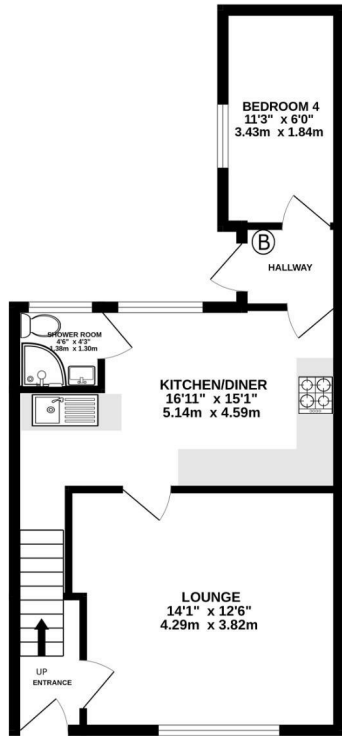
This homely property offers a versatile layout, including a convenient ground floor bathroom, making it ideal for families or investors alike.

Positioned in an excellent location, the property benefits from close proximity to a range of local amenities, transport links, and easy access into Central London. Combining character with practicality, this is a fantastic opportunity to acquire a home in a well-connected and desirable neighbourhood.

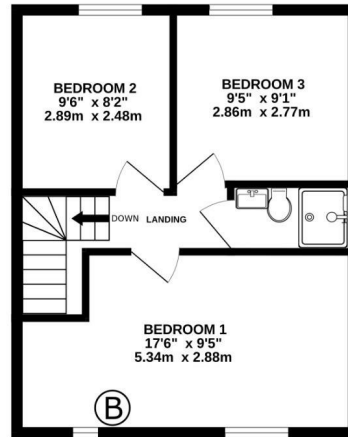


# Floor plans

GROUND FLOOR  
461 sq.ft. (42.8 sq.m.) approx.

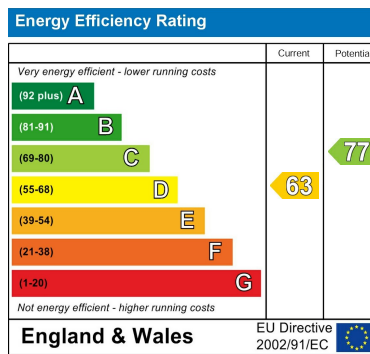


1ST FLOOR  
386 sq.ft. (35.9 sq.m.) approx.



TOTAL FLOOR AREA: 847 sq.ft. (78.7 sq.m.) approx.

Whilst every attempt has been made to ensure the accuracy of the floorplan contained here, measurements of doors, windows, rooms and any other items are approximate and no responsibility is taken for any error, omission or mis-statement. This plan is for illustrative purposes only and should be used as such by any prospective purchaser. The services, systems and appliances shown have not been tested and no guarantee as to their operability or efficiency can be given.  
Made with Metropix ©2026



Council Tax Band D    EPC Rating D



68 South Hill Avenue

Harrow

HA2 0NH

02081501988

sales@leafyestates.co.uk

leafyestates.co.uk