



Poppy Close, Ormesby Middlesbrough TS7 9JG

welcome to

Poppy Close, Ormesby Middlesbrough

A three-bedroom semi-detached house with a single garage situated on Poppy Close, Ormesby. The property is located within the Ormesby area, where there are a range of amenities including Overfields School, St Gabriel's Catholic Primary School, nursery provision and retail outlets.

Entrance Hall

Stairs to first floor and doors to kitchen, lounge and w/c. Radiator.

Downstairs W/C

Wall mounted basin, toilet, radiator, electric consumer unit.

Kitchen

7' 9" excl door recess x 16' 1" (2.36m excl door recess x 4.90m)
UPVC double glazed window. Fully fitted kitchen, sink with draining board, electric hob & oven, space for washing machine, space for tumble drier, radiator. Concealed wall mounted gas central heating boiler, space for freestanding fridge/freezer and table and chairs.

Lounge

13' 7" x 10' 10" (4.14m x 3.30m)
UPVC double glazed window, tv point, radiator, patio doors leading to private rear garden.

Landing

Doors leading to two double bedrooms, single bedroom and shower room.

Bedroom 1

13' 6" x 8' (4.11m x 2.44m)
A double bed room situated at the front of the property with two UPVC double glazed windows, radiator, bulk head & TV point.

Bedroom 2

12' x 7' 2" (3.66m x 2.18m)
A double bedroom situated at the rear of the property overlooking the garden. Radiator, loft access to the roof, TV point, UPVC double glazed window.

Bedroom 3

6' x 9' (1.83m x 2.74m)
A single bedroom overlooking the garden at the rear of the property, UPVC double glazed window.

Shower Room

Pedestal basin, toilet and large shower cubicle, radiator, UPVC double glazed window.

Externally Rear Garden

A very private garden laid to lawn with a patio near to the property. A summer house/ green house is included in the sale. The lawn area is surrounded by an abundance of evergreen & flowering shrubs and climbing roses.

Front Garden

Front Garden is laid to lawn, single garage and drive to the side of the property.

Garage

Access from the rear garden is through a single door. Outside tap in garage, power and lights. Up and over remote controlled single garage door. Virgin Media cabling to garage.





view this property online mannersandharrison.co.uk/Property/MAR112166



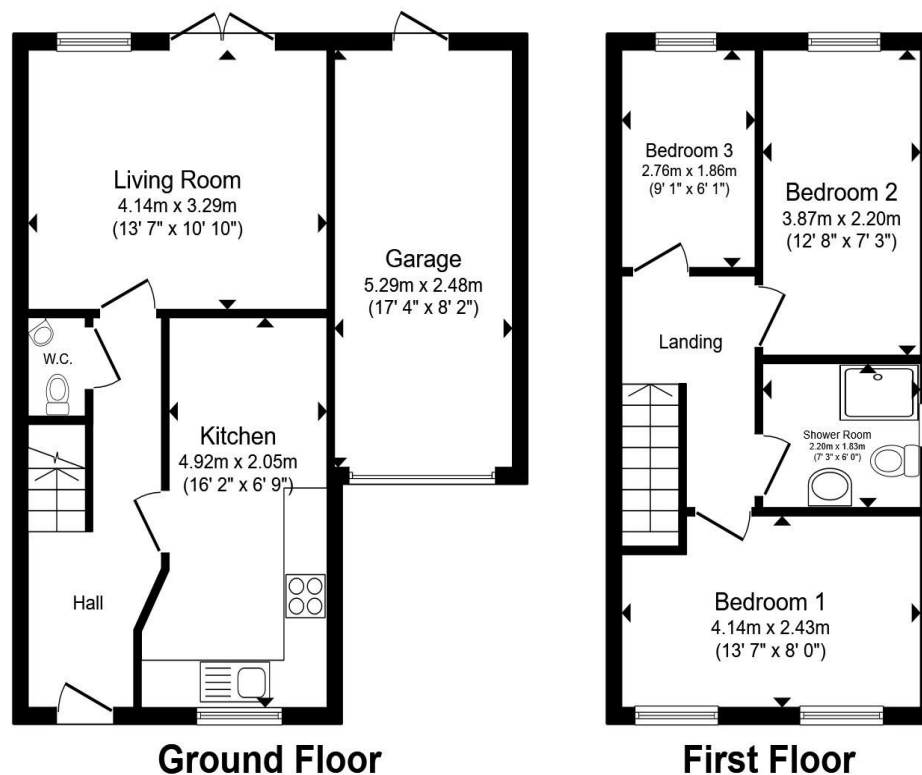
welcome to

Poppy Close, Ormesby Middlesbrough

- LOVELY HOME
- MODERN FITTED KITCHEN
- BEAUTIFUL REAR GARDEN
- GARAGE
- DRIVEWAY

Tenure: Freehold EPC Rating: C
Council Tax Band: B

offers in excess of
£135,000



Total floor area 83.0 m² (893 sq.ft.) approx

This floor plan is for illustrative purposes only. It is not drawn to scale. Any measurements, floor areas (including any total floor area), openings and orientation are approximate. No details are guaranteed, they cannot be relied upon for any purpose and they do not form part of any agreement. No liability is taken for any error, omission or misstatement. A party must rely upon its own inspection(s). Powered by www.propertybox.io



view this property online mannersandharrison.co.uk/Property/MAR112166



Property Ref:
MAR112166 - 0007

1. MONEY LAUNDERING REGULATIONS Intending purchasers will be asked to produce identification documentation at a later stage and we would ask for your co-operation in order that there is no delay in agreeing the sale. 2. These particulars do not constitute part or all of an offer or contract. 3. The measurements indicated are supplied for guidance only and as such must be considered incorrect. Potential buyers are advised to recheck measurements before committing to any expense. 4. We have not tested any apparatus, equipment, fixtures or services and it is in the buyers interest to check the working condition of any appliances. 5. Where an EPC, or a Home Report (Scotland only) is held for this property, it is available for inspection at the branch by appointment. If you require a printed version of a Home Report, you will need to pay a reasonable production charge reflecting printing and other costs. 6. We are not able to offer an opinion either written or verbal on the content of these reports and this must be obtained from your legal representative. 7. Whilst we take care in preparing these reports, a buyer should ensure that his/her legal representative confirms as soon as possible all matters relating to title including the extent and boundaries of the property and other important matters before exchange of contracts.

Manners & Harrison is a trading name of Sequence (UK) Limited which is registered in England and Wales under company number 4268443, Registered Office is Cumbria House, 16-20 Hockliffe Street, Leighton Buzzard, Bedfordshire, LU7 1GN. VAT Registration Number is 500 2481 05.


manners & harrison



01642 311133



Marion@mannersandharrison.co.uk



30 & 30a Stokesley Road, Marton,
MIDDLESBROUGH, Cleveland, TS7 8DX



mannersandharrison.co.uk