



smarthomes

New Road

Solihull

- A Well Presented One Bedroom Period Property
- Re-Fitted Kitchen, Lounge & Breakfast Area
- No Upward Chain
- Situated a Stones Throw from Solihull Tow Centre

£235,000

Current EPC Rating - D

Current Council Tax Band - B

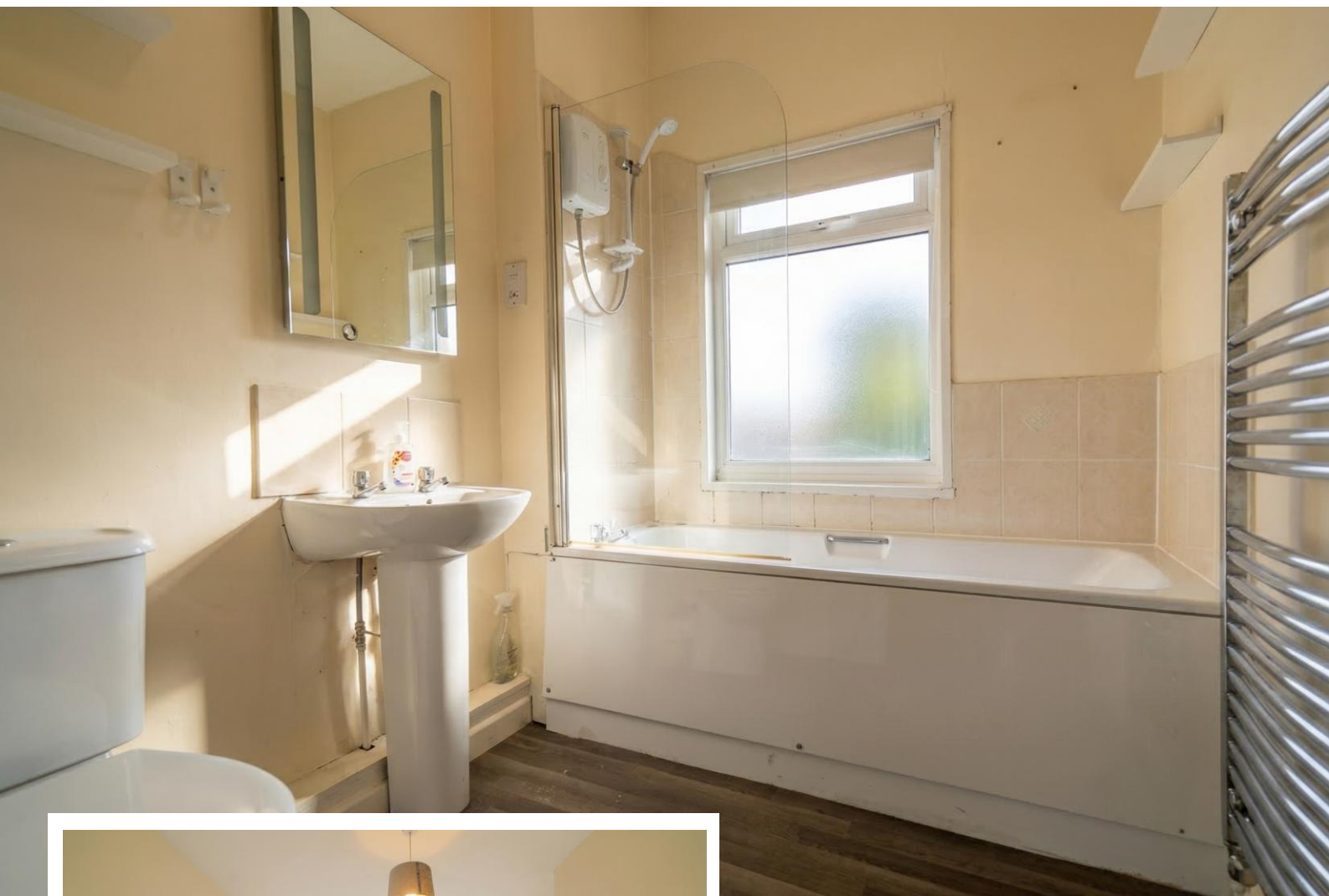




Property Description

An extended end terrace period property opposite the entrance to Malvern Park and within walking distance to Solihull Town Centre. Benefiting from no upward chain, one double bedroom, extended & re-fitted kitchen, open plan lounge and breakfast area, bathroom and private rear garden

Solihull is situated in the heart of England and is considered to be one of the most highly sought after residential areas in the country boasting a range of local amenities including excellent schools, colleges, parks, restaurants, bars and an excellent variety of shopping centres including Touchwood shopping centre and Resorts World. Solihull has convenient road networks linking the M42, M6, M40, M1 and M5 giving easy access to the NEC Arena, Birmingham International Airport and Railway Station.



Rooms & Measurements

Lounge to Front 13' 9" x 9' 2" (4.2m x 2.8m)

Breakfast Area 7' 6" x 5' 10" (2.3m x 1.8m)

Extended & Re-Fitted Kitchen to Rear 11' 1" x 6' 2" (3.4m x 1.9m)

Bedroom to Front 13' 9" x 9' 2" (4.2m x 2.8m)

Bathroom to Rear 7' 2" x 5' 10" (2.2m x 1.8m)

Tenure

We are advised by the vendor that the property is freehold, but are awaiting confirmation from the vendor's solicitor. We would strongly advise all interested parties to obtain verification through their own solicitor or legal representative. EPC supplied by vendor. Current council tax band - B



316 Stratford Road
Shirley
Solihull
B90 3DN

www.smart-homes.co.uk
0121 744 4144

Agents Note: Whilst every care has been taken to prepare these particulars, they are for guidance purposes only. We believe all information to be correct from the day of marketing however, we advise and recommend that your conveyancer and or surveyor verifies all information supplied. All measurements are approximate are for general guidance purposes only and whilst every care has been taken to ensure their accuracy, they should not be relied upon and potential buyers are advised to recheck the measurements.