

For Sale

£195,000 Freehold



Lime Grove Smethwick B66 3ER

- Energy Rating: D
- MID-TERRACE
- TWO BEDROOMS
- TWO RECEPTION ROOMS
- REAR GARDEN



Property Details

Ground Floor

Living Room

Features a front facing bay window flooding the room with natural light, decorated with grey walls, carpeted flooring and a fitted radiator.

Reception Room

Features a rear-facing window overlooking the garden, with stairs leading up to the first floor. Decorated with grey walls and carpeted flooring.

Kitchen

A modern galley-style kitchen featuring sleek units, tiled flooring, ample worktop space, and two bright windows bringing in plenty of natural light. Finished with grey décor, integrated oven and hob, and access through to the rear of the property.

Garden

A private rear garden featuring a patio area and a lawned section, all enclosed by secure fenced boundaries.

First Floor

Bedroom One

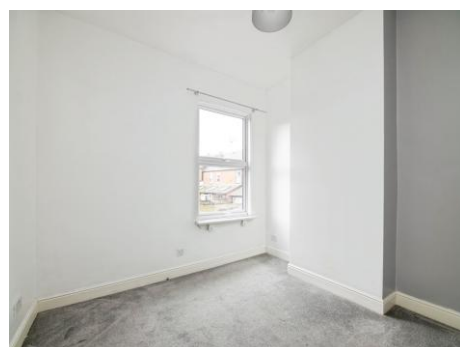
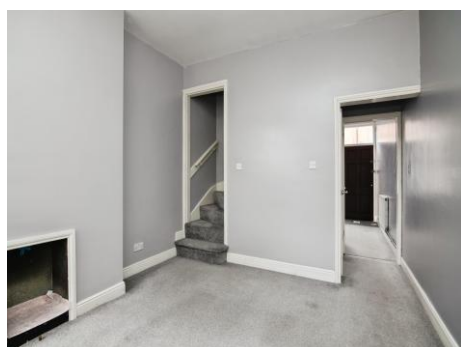
Features double-glazed windows to the rear aspect, a ceiling light point, and carpeted floor.

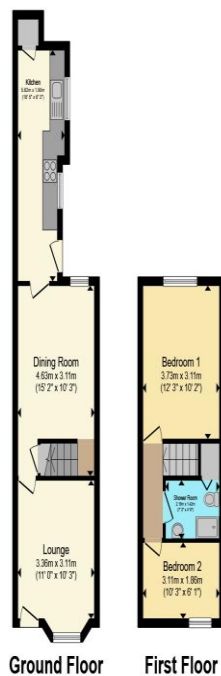
Bedroom Two

Features double-glazed windows to the front aspect, a ceiling light point, and carpeted floor.

Bathroom

Features a corner shower, hand basin with grey splashback tiles, and a W.C., all finished with grey walls and grey-style vinyl flooring.





To view this property please contact Connells on

T 0121 420 3611
E bearwood@connells.co.uk

122-123 Poplar Road Bearwood
 SMETHWICK B66 4AP

Property Ref: BEA312846 - 0001

Tenure:Freehold EPC Rating: D

Total floor area 61.6 m² (663 sq.ft.) approx

This floor plan is for illustrative purposes only. It is not drawn to scale. Any measurements, floor areas (including any total floor area), openings and orientation are approximate. No details are guaranteed, they cannot be relied upon for any purpose and they do not form part of any agreement. No liability is taken for any error, omission or misstatement. A party must rely upon its own inspection(s). Powered by www.propertybox.io



1. MONEY LAUNDERING REGULATIONS Intending purchasers will be asked to produce identification documentation at a later stage and we would ask for your co-operation in order that there will be no delay in agreeing the sale. 2. These particulars do not constitute part or all of an offer or contract. 3. The measurements indicated are supplied for guidance only and as such must be considered incorrect. Potential buyers are advised to recheck measurements before committing to any expense. 4. We have not tested any apparatus, equipment, fixtures, fittings or services and it is in the buyers interest to check the working condition of any appliances.

Connells Residential is registered in England and Wales under company number 1489613, Registered Office is Cumbria House, 16-20 Hockliffe Street, Leighton Buzzard, Bedfordshire, LU7 1GN. VAT Registration Number is 500 2481 05.

see all our properties at www.connells.co.uk | www.rightmove.co.uk | www.zoopla.co.uk