



Price
£575,000

Freehold

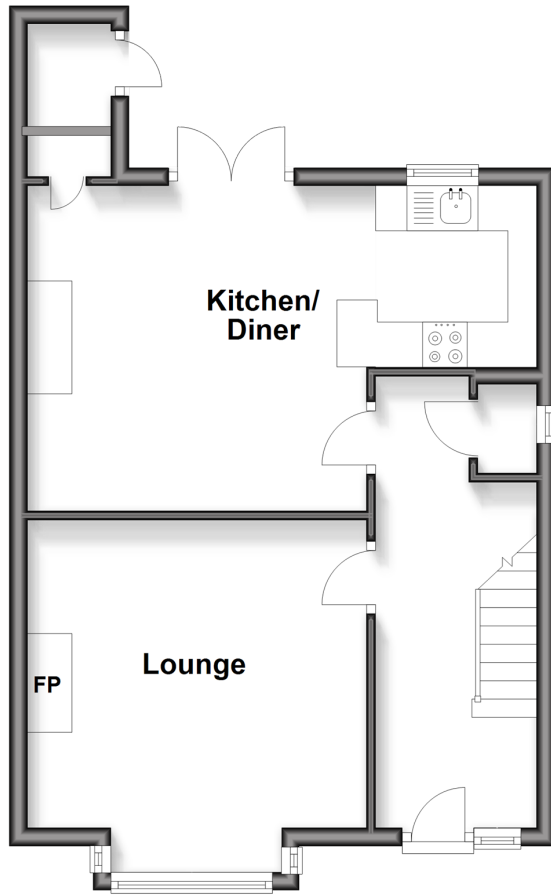
5x  2x  1x 

**Stanmer Villas, Brighton,
East Sussex, BN1**

cubitt & west
Helping you move forwards

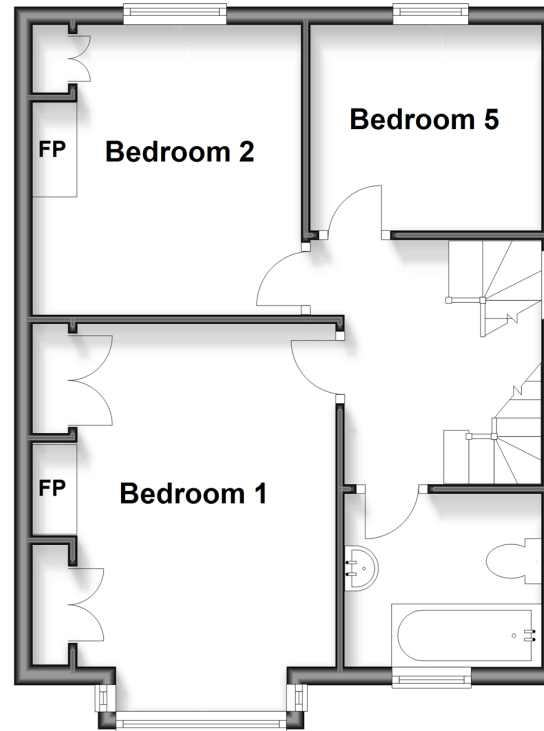
Ground Floor

Approx. 43.2 sq. metres (465.1 sq. feet)



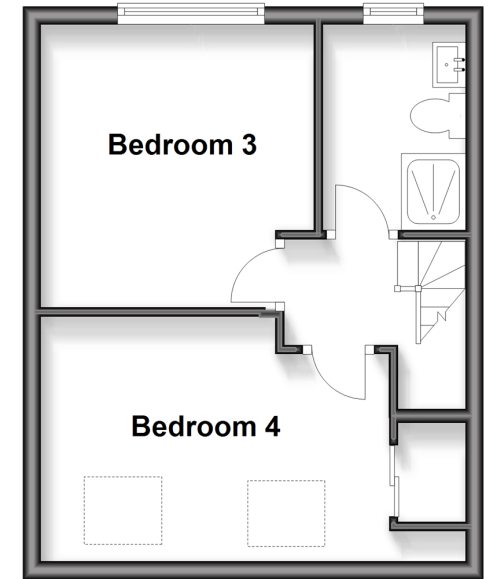
First Floor

Approx. 41.5 sq. metres (447.0 sq. feet)



Second Floor

Approx. 28.4 sq. metres (305.8 sq. feet)



Accommodation

GROUND FLOOR

Entrance Hall

Lounge: 15'2 into bay x 11'1 (4.63m x 3.38m)

Kitchen/Diner: 17'2 x 12'0 (5.24m x 3.66m)

FIRST FLOOR

Landing

Bedroom 1: 15'2 into bay x 11'1 (4.63m x 3.38m)

Bedroom 2: 12'0 x 9'8 (3.66m x 2.95m)

Bedroom 5: 8'11 x 7'2 (2.72m x 2.19m)

Bathroom

SECOND FLOOR

Landing

Bedroom 3: 11'2 x 9'10 (3.41m x 3.00m)

Bedroom 4: 12'5 x 8'10 (3.79m x 2.69m)

Shower Room

OUTSIDE

Front & Rear Garden



Main features

- Generous size with ample space for all or for those needing home office
- Situated in a popular area close to Fiveways with its shops, cafes and lively community
- Open plan kitchen/diner offering great entertaining space
- Good sized garden
- Offered chain free

Nearest Schools

Primary Schools: Hertford Junior School 0.5 miles, St Joseph's Catholic Primary 0.6 miles, Downs Junior School 0.7 miles
Secondary Schools: Dorothy Stringer School 0.6 miles, Varndean School 0.9 miles

Transport Information

Train Stations: London Road 0.9 miles, Preston Park 1.5 miles, Brighton 1.6 miles, Moulsecoomb 1.6 miles

Address

Stanmer Villas, Brighton, East Sussex, BN1

Directions

For directions to this property please contact us.



cubitt&west
Helping you move forwards

Call Fiveways Branch 01273 564444 ■ cubittandwest.co.uk



30510867/20260404/SEH/AB