



Aldreds
Estate Agents

69 Beach Farm Arbor Lane

Pakefield, Lowestoft, NR33 7BD

Offers Over £135,000



69 Beach Farm Arbor

Pakefield, Lowestoft, NR33 7BD

Aldreds are delighted to offer this superb double width mobile home situated on this very popular residential Beach Farm Park being within a very short walk of East Pakefield beach and amenities. This mobile home is situated in a very quiet position with double length driveway providing ample off road parking and a full range of wrap around gardens which are laid to artificial lawn, patio seating areas with 2 metal storage sheds. This spacious versatile accommodation includes an entrance hall, spacious lounge, large open plan kitchen/diner, 2 double bedrooms and a modern shower room. Presented to a good standard throughout with the benefits of gas fired central heating and Upvc double glazed windows with made to measure timber window blinds included in the asking price. Properties on this ever popular residential park, especially in this secluded location rarely become available and an early viewing is strongly recommended.

Wide Entrance Hall

Fitted carpet, 2 x full length storage cupboards, radiator, power points, Upvc entrance door.

Lounge

17'11" x 10'5" (5.47 x 3.2)

Fitted carpet, double aspect Upvc windows with fitted window blinds included, coved ceiling, T.V point, power points, radiator.

Kitchen/Diner

8'10" x 17'4" (2.70 x 5.29)

Tiled effect vinyl flooring, range of fitted kitchen units, integral dishwasher, electric oven with matching four burner gas hob, extraction cooker hood, extended work surfaces, tiled splash backs, power points, double stainless steel sink with single drainer, radiator, recess for white goods including plumbing for washing machine, double aspect Upvc windows with fitted window blinds, Upvc door leading out to the side garden, ample space for family size dining table and chairs.

Bedroom 1

10'9" x 9'5" (3.28 x 2.89)

Fitted carpet, power points, Upvc window with fitted window blind. radiator, power points, fitted wardrobes.





Bedroom 2

10'7" x 9'6" (3.23 x 2.92)

Fitted carpet, coved ceiling, Upvc window, radiator, power points, fitted wardrobes & drawers.

Shower Room

Laminate flooring, quality fitted shower suite comprising of a double width shower cubicle with aqua board splash backs enclosed by sliding glass doors, vanity sink unit, low level W.C with enclosed cistern, Upvc window, extractor fan.

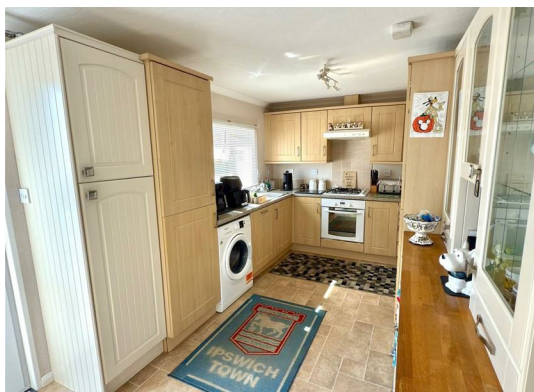
Outside

Outside To The Front

There is a long driveway providing parking for up to 2/3 cars, patio seating area, plastic veranda with disabled friendly slope. further enclosed garden which is laid to artificial grass with a raised patio seating area.

Outside To The Rear

There is an enclosed lawned garden enclosed by low level fencing, with a further garden area with patio and 2 metal sheds



Outgoings

Fully Residential

Site Fees - £213.85 per calendar month to include water and sewage

Council Tax Band A

Double Width mobile home measuring to 9.5m x 5.5m

Tenure

Freehold

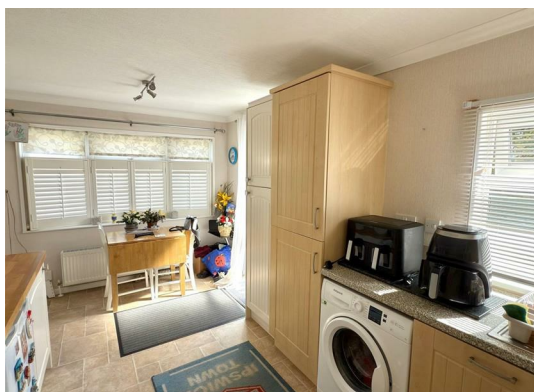
Services

Mains water, electricity, LPG, drainage.

Council Tax

East Suffolk. Band 'A'

Ref: L2342/04/25



Floor Plan



Viewing

Please contact our Aldreds Lowestoft Office on 01502 565432 if you wish to arrange a viewing appointment for this property or require further information.

Disclaimer
These particulars are issued on an understanding that all negotiations shall be conducted through Messrs. Aldreds. Please note: Messrs. Aldreds for themselves and for the vendors or lessors of this property whose agents they are given notice that: 1. Particulars are set out as a general outline only for guidance of intending purchasers or lessees, and do not constitute nor constitute part of, an offer or contract. 2. All descriptions, dimensions, references to condition and necessary permissions for use and occupation, and other details are given without responsibility and any intending purchasers or tenants should not rely on them as statements or representations of fact but must satisfy themselves by inspection or otherwise as to the correctness of each of them. 3. No person in the employment of Messrs. Aldreds has any authority to make or give any representation or warranty whatever in relation to this property. 4. If you are proposing to visit the property and are travelling some distance please check with Aldreds on the issue of availability prior to travelling. 5. Aldreds Property Consultants and associated services may offer additional services to the prospective purchaser for which they will be entitled to receive a commission. Aldreds are pleased to be working with Mortgage Advice Bureau. They're an award-winning mortgage broker with over 1,400 advisers across the UK, and have access to over 12,000 mortgage products from over 90 lenders. Aldreds Estate Agents Ltd receive a commission of £200 on each completed case. Your home may be repossessed if you do not keep up repayments on your mortgage. There may be a fee for mortgage advice. The actual amount you pay will depend upon your circumstances. The fee is up to 1%, but a typical fee is 0.3% of the amount borrowed. Mortgage Advice Bureau is a trading name of Mortgage Seeker Limited which is an appointed representative of Mortgage Advice Bureau Limited and Mortgage Advice Bureau (Derby) Limited which are authorised and regulated by the Financial Conduct Authority. Mortgage Seeker Limited Registered Office: Lovewell Blake, Sixty Six North Quay, Great Yarmouth, Norfolk, NR30 1HE. Registered in England Number: 03721415. 6. Potential purchasers should check with their providers that the broadband and mobile phone coverage they would require is available.

Area Map



Energy Efficiency Graph

