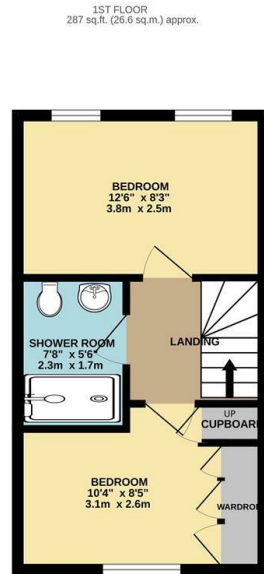
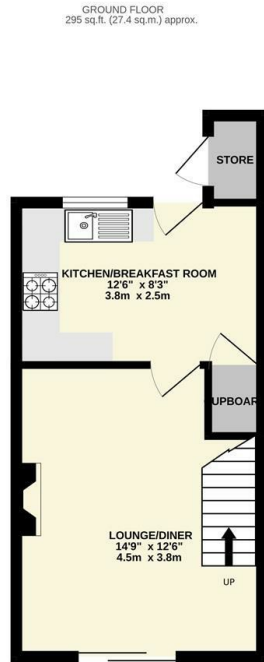




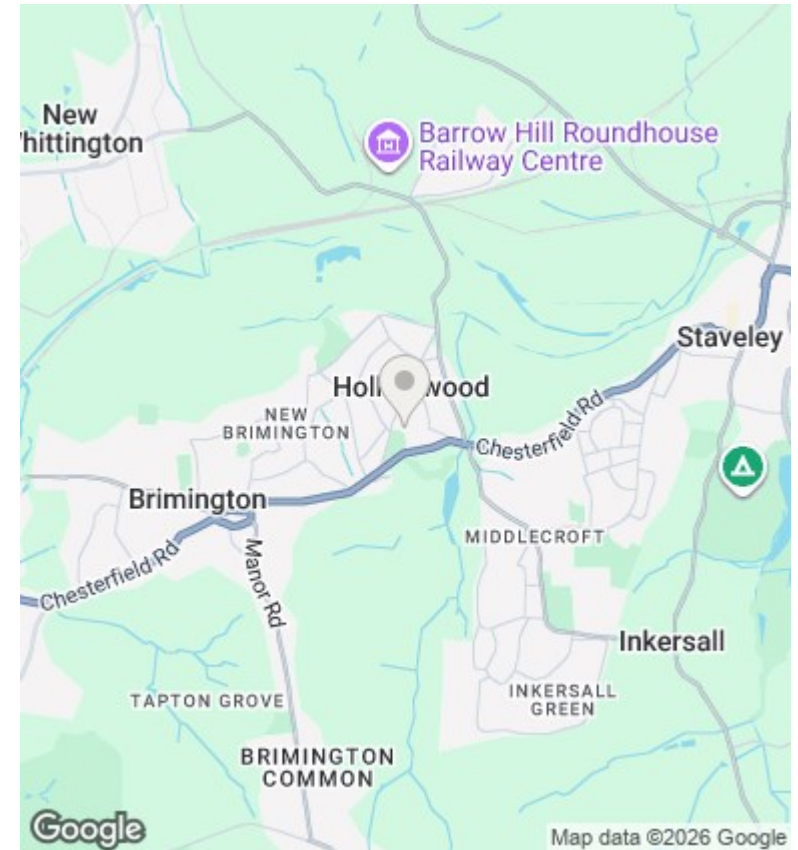
4 Alpine Grove, Hollingwood, Chesterfield, S43 2JD

£155,000

- 2 Bedroom Terrace house
- Kitchen with fitted cabinets and worktops
- Ideal 1st time buy
- Off street parking for 2 vehicles
- Outside store
- Offered for sale no chain
- Open plan lounge diner
- Enclosed rear garden with shed
- modern shower room



TOTAL FLOOR AREA: 582 sq.ft. (54.1 sq.m.) approx.
Whilst every attempt has been made to ensure the accuracy of the floorplan contained herein, measurements of doors, windows, rooms and any other items are approximate and no responsibility is taken for any error, omission or misstatement. This plan is for guidance purposes only and should be used as such by any prospective purchaser. The services, systems and appliances shown have not been tested and no guarantee as to their operability or efficiency can be given.
Made with Metropix (2025)



Directions

Viewings

Viewings by arrangement only. Call 01246 276 276 to make an appointment.

Council Tax Band

C

EPC Rating:

C

Energy Efficiency Rating		Current	Potential
Very energy efficient - lower running costs			
(92 plus)	A		
(81-91)	B		
(69-80)	C	72	77
(55-68)	D		
(39-54)	E		
(21-38)	F		
(1-20)	G		
Not energy efficient - higher running costs			
England & Wales		EU Directive 2002/91/EC	