



Portmore Park Road, Weybridge, KT13 8ES

g
GRANTS
HOMES



This beautifully presented four-bedroom detached family home is set on Portmore Park Road, just yards from the historic Portmore Park Pillars. Its enviable central location offers exceptional convenience for Weybridge Town Centre, the River Thames, and the catchment areas of some of the town's most highly regarded schools.

To the front, a large block-paved driveway provides generous parking for multiple cars and leads to the garage. A covered porch opens into a welcoming hallway with a downstairs cloakroom and a useful utility room. The dual aspect sitting room enjoys an abundance of natural light and opens directly onto the spacious rear garden and patio. The recently remodelled kitchen and breakfast room makes excellent use of space, with modern cabinetry, a breakfast bar, and integrated appliances. A versatile front reception room offers the flexibility to be used as a family room, playroom, dining room, or home office, while an additional study is positioned to the rear of the garage, overlooking the garden.

Upstairs, the main bedroom suite is located at the rear of the property and features fitted wardrobes and an en suite shower room. Three further bedrooms and a contemporary family bathroom complete the first floor.

Outside to the rear the property boasts a lovely rear garden which is a nice mix of patio area, low maintenance artificial lawn, a lovely, decked area spanning the width of the end of the garden, and mature raised planted borders. A wonderful opportunity to purchase a detached family home in a mature tree lined road in the heart of central Weybridge.

Freehold



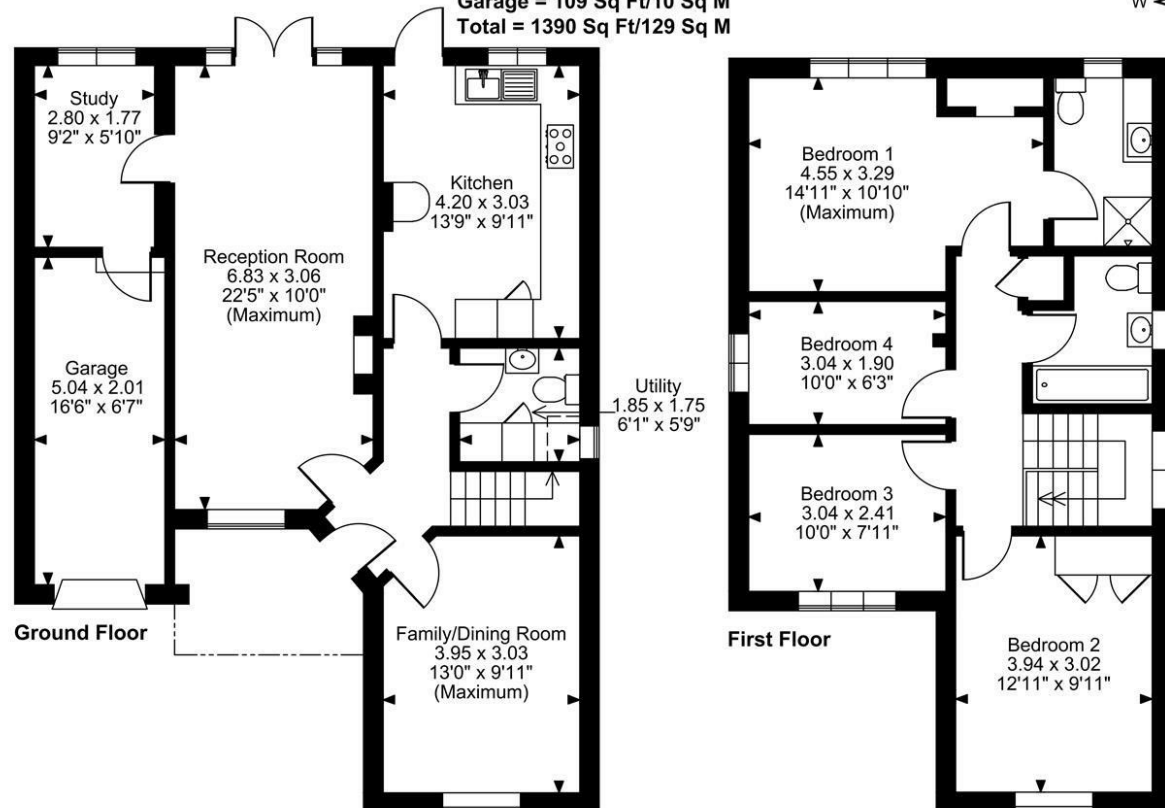
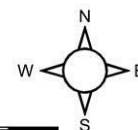
Portmore Park Road, Weybridge, Surrey

Approximate Gross Internal Area

Main House = 1281 Sq Ft/119 Sq M

Garage = 109 Sq Ft/10 Sq M

Total = 1390 Sq Ft/129 Sq M



FOR ILLUSTRATIVE PURPOSES ONLY - NOT TO SCALE

The position & size of doors, windows, appliances and other features are approximate only.

© ehouse. Unauthorised reproduction prohibited. Drawing ref. dig/8659601/PJS



EPC: D55

g
GRANTS
HOMES



Grants Homes 60 Church Street Weybridge KT13 8DL
T: 01932 841020 E: weybridge@grantshomes.co.uk

g
GRANTS
HOMES