



## Islip Street

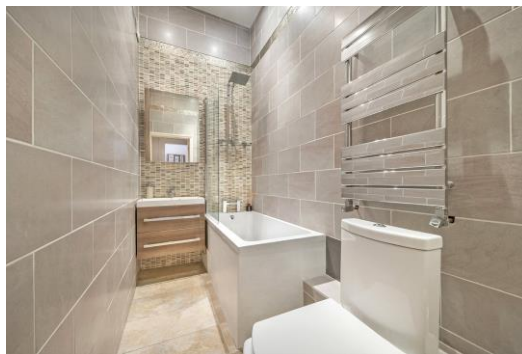
Kentish Town, NW5

Asking Price £475,000

A generously proportioned and light filled one bedroom apartment on the raised ground floor of a mid-terraced Victorian building in a superb Kentish Town location. The apartment is in good order throughout with high ceilings and large windows and benefits from a versatile and flexible layout with reception room, bedroom, separate kitchen and bathroom.

**CHESTERTONS**





## Islip Street

Kentish Town, NW5

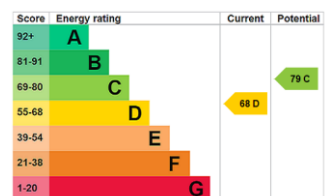
- One-bedroom apartment in good order throughout
- Raised ground floor of pretty period terrace
- Generously proportioned light rooms
- High ceilings and large windows
- Close to transport, amenities and facilities





Islip Street is to the east of Kentish Town Road and you are within easy reach of local amenities, facilities, cafes restaurants and eateries as well as some of London's finest pubs. Camden Town is within easy reach as are the open spaces of Hampstead Heath and Parliament Hill. Transport is excellent with major bus routes, Northern Line, Thameslink and Overground stations which offer unparalleled links across London and beyond. \*Please note these photos were taken before prior to the current tenancy\*

**Tenure:** Leasehold with 94 years remaining  
**Service Charge:** £702 per annum  
**Ground Rent:** £40 per annum  
**Local Authority:** London Borough Of Camden  
**Council Tax Band:** D

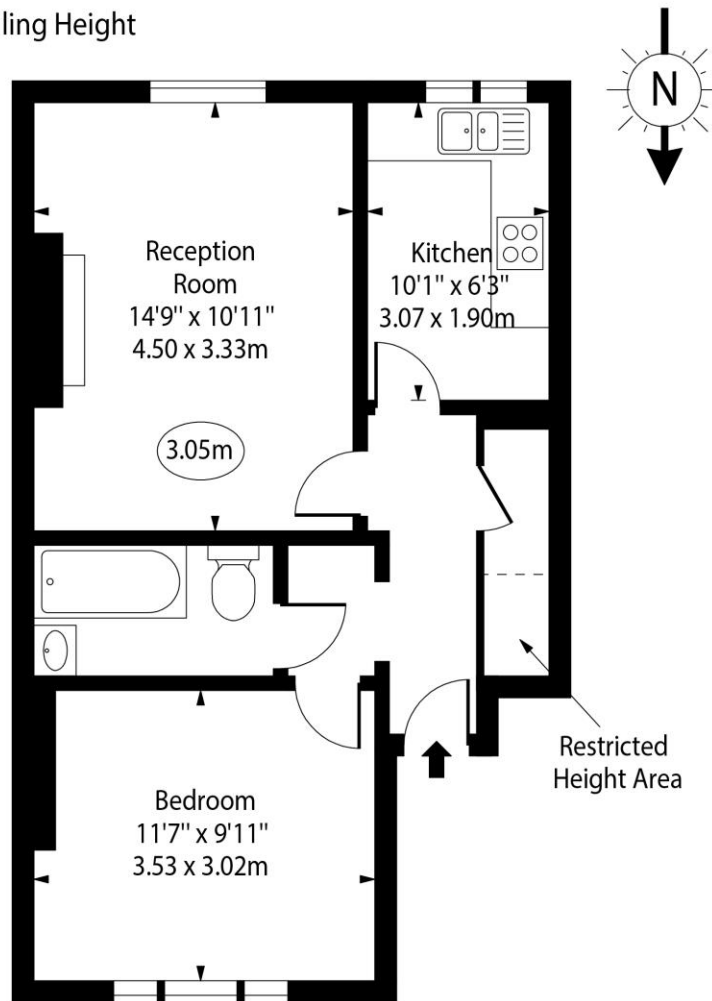


### *Chestertons Camden & Kentish Town Sales*

99-101 Parkway  
 Camden  
 London  
 NW1 7PP  
 camden@chestertons.co.uk  
 020 7267 2053  
 chestertons.co.uk

Islip Street

○ - Ceiling Height



Ground Floor

Gross Internal Area - 473 Sq Ft - 43.94 Sq M

Approx Gross Internal Area

473 Sq Ft - 43.94 Sq M

Approx. Floor Area Including Restricted Heights

480 Sq Ft - 44.59 Sq M

For Illustration Purposes Only - Not To Scale

[www.goldlens.co.uk](http://www.goldlens.co.uk)

Ref. No. 017101.1E

