



Jacaranda Lime Walk, Dibden Purlieu  
£965,000



ANTHONY JAMES  
PROPERTIES



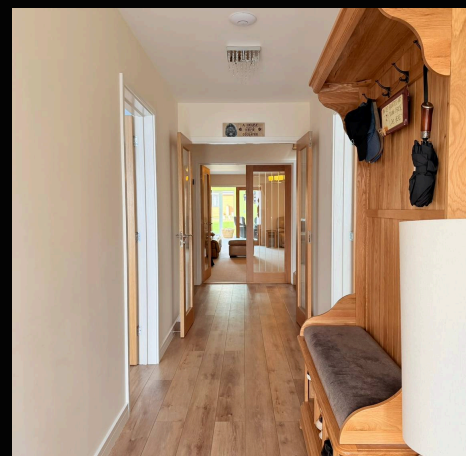
# Jacaranda Lime Walk

Dibden Purlieu, Southampton

This exceptional five-bedroom detached chalet is the epitome of contemporary family living, having undergone a complete renovation signed off in 2023. Immaculately presented throughout, the home is thoughtfully designed with modern luxury in mind, featuring underfloor heating across the entire ground floor for year-round comfort. The expansive living room, measuring an impressive 23'6 x 18', offers a welcoming space for relaxation or entertaining. The heart of the home is the stunning L-shaped kitchen, dining, and living area, where a sleek modern kitchen with a central island, granite worktops, and integrated appliances (including two wine fridges) awaits the culinary enthusiast. The utility room is equipped with a water softener, and throughout the property, oak doors and an oak and glass balustrade add a touch of elegance. All five bedrooms are generously proportioned doubles, three of which benefit from luxurious en-suite bathrooms featuring contemporary walk-in showers. Multiple modern bathrooms provide ample facilities for family and guests, while the overall layout and finish of the home reflect meticulous attention to detail and a commitment to high-quality materials and craftsmanship.

Council Tax band: G

Tenure: Freehold



1 Southward House  
Dibden Purlieu SO45 4PT

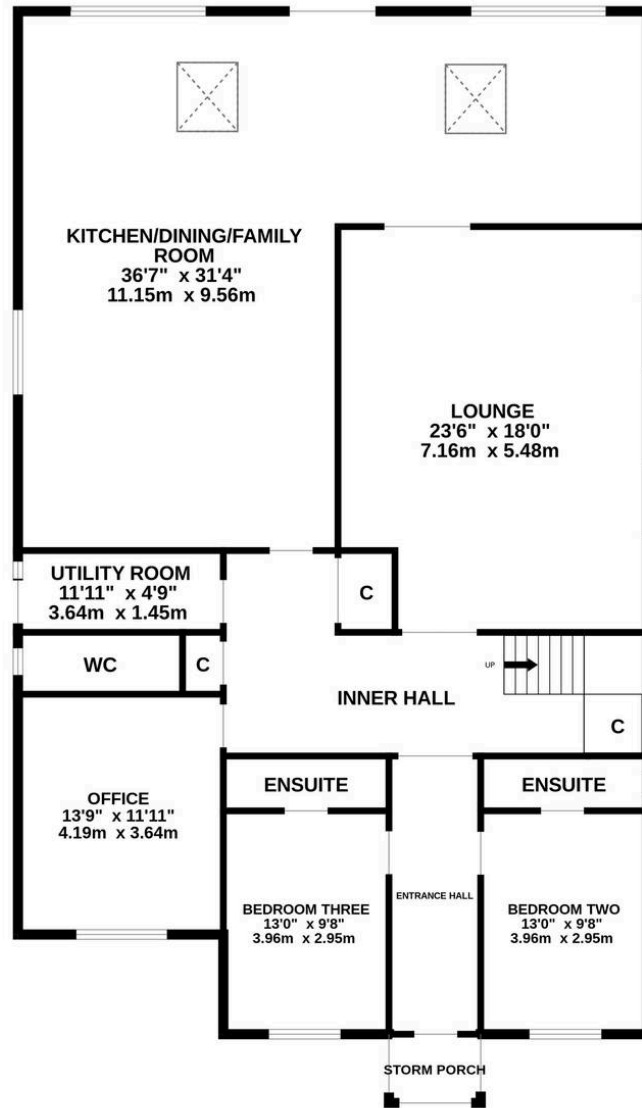


T: 02380 844405

info@anthonyjamesproperties.co.uk



GROUND FLOOR



1ST FLOOR

