



**Valley Road, SW16**

**£850,000**

**Dexters**





## Valley Road, SW16

Spread over three floors is this incredible four bedroom family home. The ground floor has modern kitchen diner and separate living room with doors onto the landscaped garden as well as a laundry cupboard and downstairs w/c.

On the first floor there are three bedrooms and a modern large bathroom as well as an en-suite to one of the bedrooms. The top floor of this property is truly unique primary suite, with double height ceilings, large shaped window and en-suite this room is an amazing space to enjoy. This home also has a large storage cupboard and off street parking for two cars accessed via the rear.

Situated off Streatham Common, Valley Road is close to both Streatham and Tulse Hill Stations which has fast services into both London Bridge and Blackfriars. There is also a bus service giving swift access to West Norwood, Streatham and Balham stations. Streatham High Road offers numerous restaurants, bars and shopping facilities.

### Features

- Four Bedrooms
- Terraced House
- Modern Development
- Off Street Parking
- Three Bathrooms
- Immaculate Condition





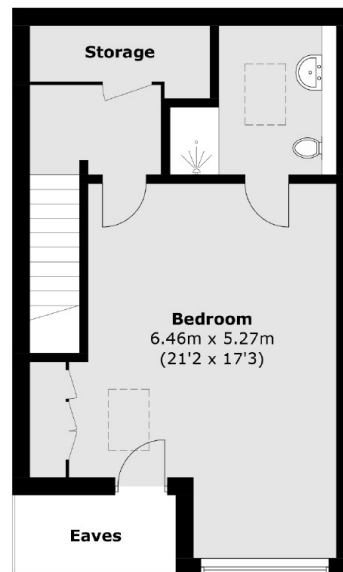




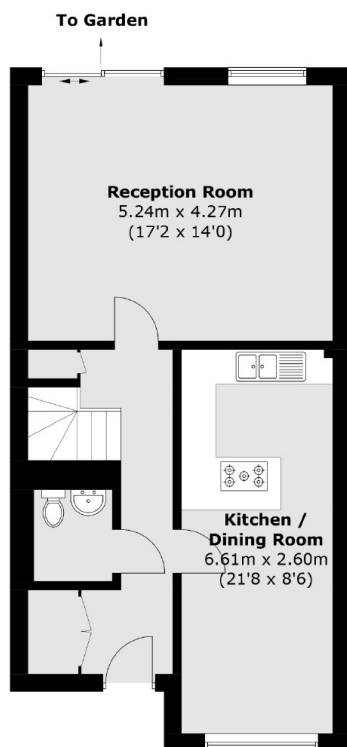




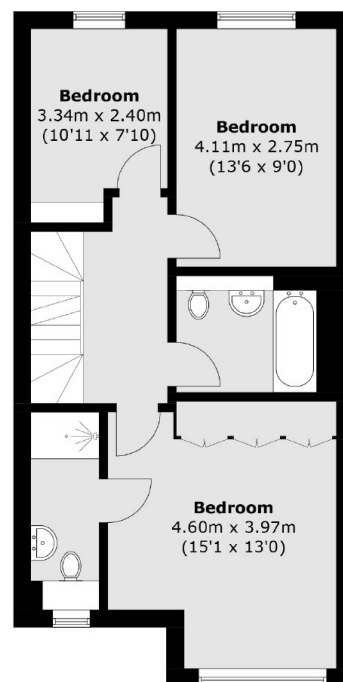
# Valley Road, London, SW16



**Second Floor**



**Ground Floor**



**First Floor**

Total area (approx.): 155.6 sq. m (1,674.9 sq. ft)  
(Excluding Eaves)

## Dexters

Streatham  
105 Streatham Hill  
London  
SW2 4UG  
Sales  
020 8674 7400

Energy Rating: B. We aim to make our particulars both accurate and reliable. However they are not guaranteed; nor do they form part of an offer or contract. If you require clarification on any points then please contact us, especially if you're traveling some distance to view. Please note that appliances and heating systems have not been tested and therefore no warranties can be given as to their good working order.



dexters.co.uk