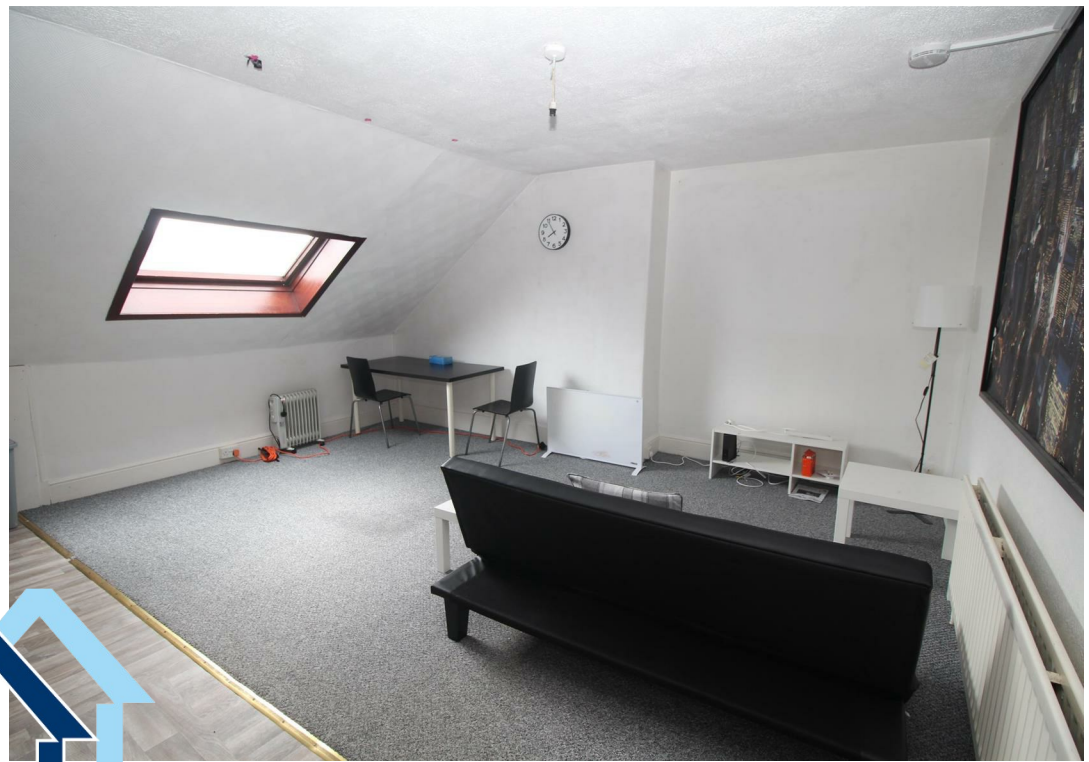




3-2, 34, ROBERTSON STREET, , PA16 8HQ







Description

Occupying a West End location this furnished one bedroom ATTIC FLAT is conveniently positioned for transport facilities including Greenock West railway station and local amenities. Specification includes: double glazing and the building is protected by a security door entry system. There is a shared rear drying green.

Apartments comprise: Shared entrance vestibule with separate door leading to private staircase which leads to the Upper Landing and benefits from an inbuilt storage cupboard. There is a spacious Lounge / Dining Room with "Velux" window. The fitted Kitchen is on open plan with maple style units and grey/black toned work surfaces. Appliances include: stainless steel chimney extractor hood, electric hob, oven, fridge/freezer. A Utility cupboard houses the washing machine.

The rear facing double sized Bedroom has a 3 light dormer window with views over the West End. A shower cubicle is located within this apartment. There is separate WC compartment with "Velux" window, WC and wash hand basin.

Applications are subject to financial criteria checks.

LLR: 57507/280/12270
LARN: 1901039



Measurements

Shard Vestibule

Private Entrance stair/Landing

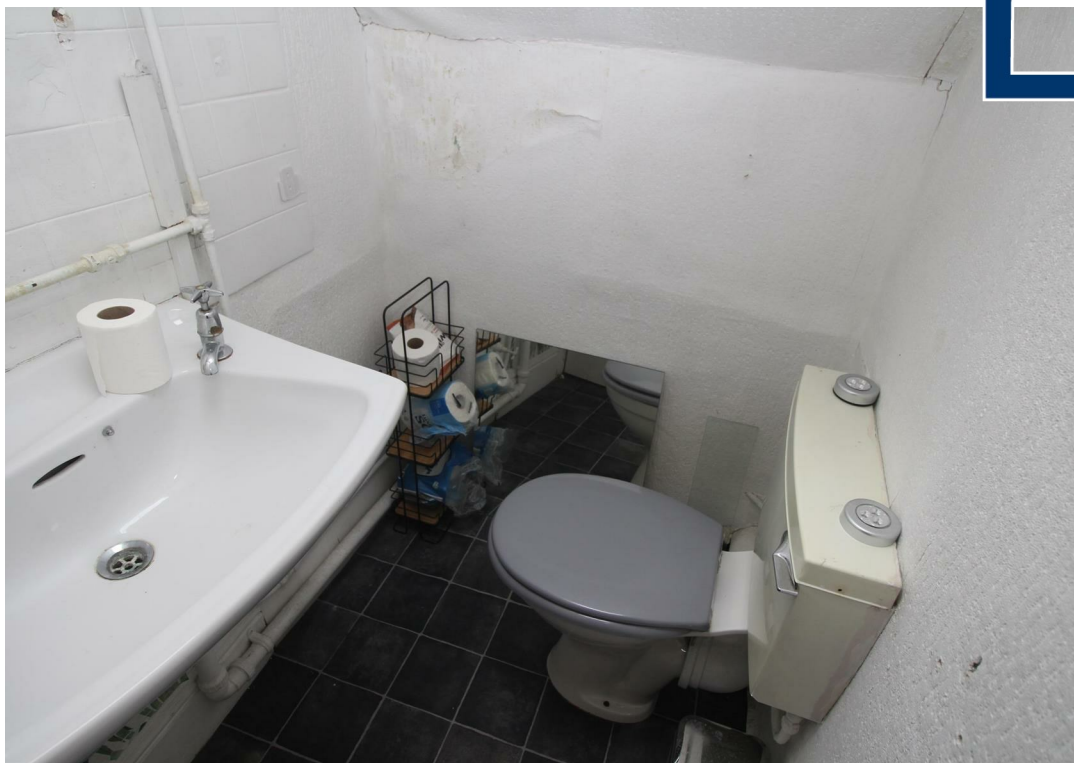
Lounge/Dining Room
5.16m x 5.00m (16'11" x 16'4")

Kitchen
3.40m x 2.49m (11'1" x 8'2")

Double Bedroom with Shower Cubicle

WC Compartment







The
next
step..



To view call 01475 888400. Speak to us 7 days a week until 11pm every day to book your viewing appointment.

House to sell or rent?

Call 01475 888400 to book your free market appraisal.

Require a solicitor?

Ask us to supply a free legal quotation from Neill Clerk & Murray, Solicitors.
www.neillclerkmurray.co.uk

Stay fully up-to-date by following Neill Clerk on:



**60 West Blackhall Street
Greenock
Renfrewshire
PA15 1UY**

t: 01475 888400

e: sales@neillclerk.co.uk

w: www.neillclerk.co.uk



Agents Notes:

These sales particulars are set out as a general outline only, issued in good faith, but do not constitute representations of fact and do not form part of any offer or contract. Any services, equipment, appliances, fittings or central heating systems have not been tested and no warranty is given or implied that these are in working order. All measurements are approximate and for guidance only.

Neither Neill Clerk Estate Agents nor any of its employees or agents has any authority to make or give any representation or warranty whatever in relation to this property.

Find all our properties at: [**rightmove**](#) [**Zoopla**](#) [**onTheMarket.com**](#) [**s1homes.com**](#)