

Flat 1, Rutland, 50 Barons Close

£150,000 Leasehold

Hadleigh Estate Agents are delighted to offer a well presented and spacious one bedroom apartment located on the ground floor of this popular development set within superbly maintained communal grounds and offering excellent access to Harborne High Street. The property further benefits from being offered with no upward chain and own garage. The property is accessible via a secure communal entrance. The accommodation briefly comprises entrance hallway, a spacious living room with ample space for living and dining room furniture and access out to a balcony. Modern fitted kitchen, double bedroom and modern shower room.

H



Location

Barons Close which is well situated between Court Oak Road and Yewcroft Avenue, allowing easy access to Birmingham City Centre, Queen Elizabeth Medical Complex, University of Birmingham and the nearby motorway network. Harborne High Street is a short walk away offering an arrays of bars, restaurants and local supermarkets.

Kitchen

Having a range of base and wall units, plumbing for utilities and space for fridge freezer. Stainless steel sink and drainer unit, double glazed window and ceiling light point.

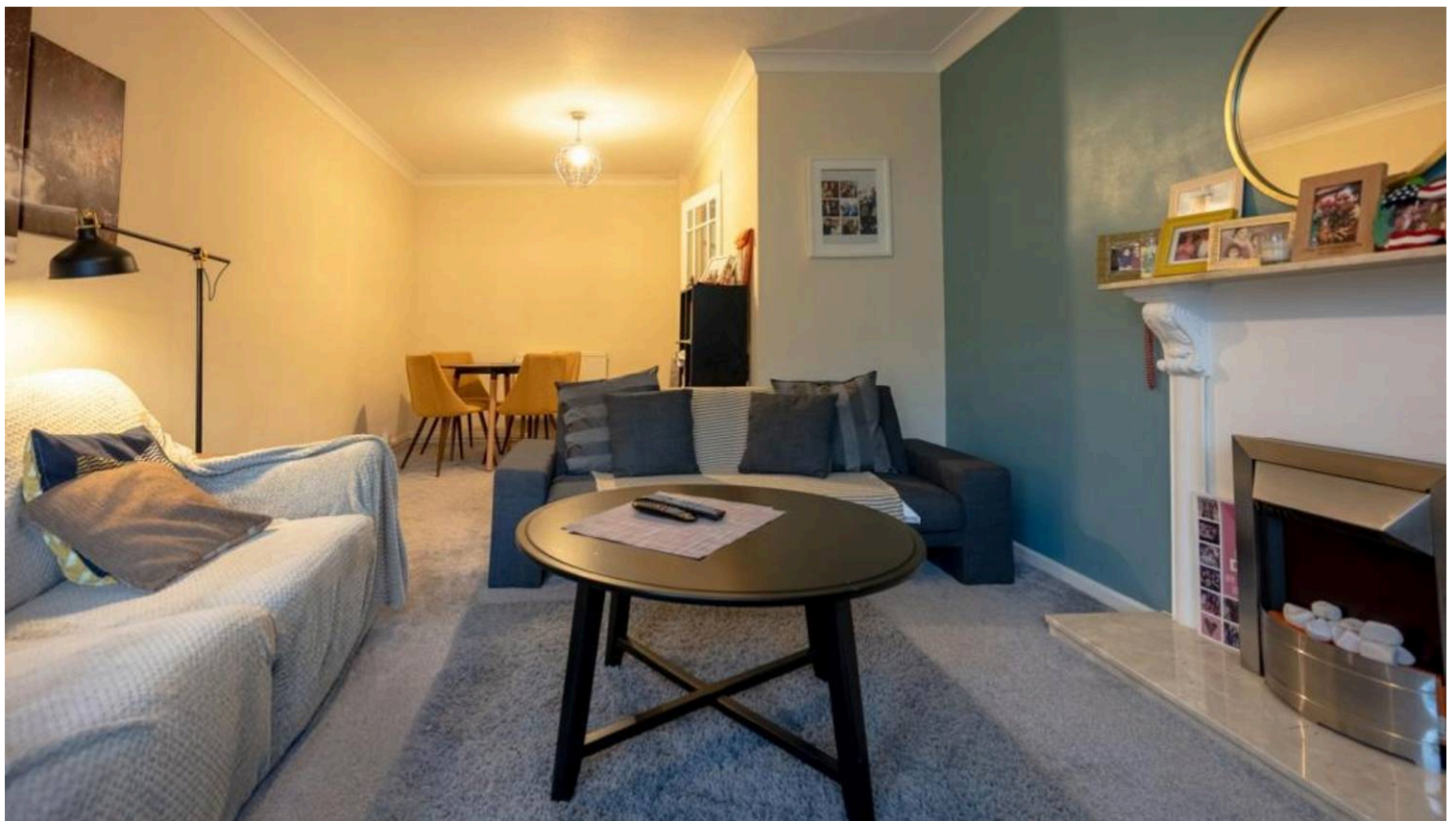


Lounge Diner

Spacious lounge and dining area, benefitting from double glazed windows and door to private balcony. Feature fireplace, central heating radiators, ceiling light points and carpeted flooring.

Double Bedroom

Spacious double bedroom with carpeted flooring, ceiling light point, central heating radiator and double glazed window.





Shower Room

Modern shower room with low level flush WC, hand wash basin and spacious walk in shower cubicle.

General Information

Council Tax band: B

Tenure: Leasehold

Years Remaining: 974

Service Charge PA: £2,340

Ground Rent PA: Peppercorn

EPC Energy Efficiency Rating: C

EPC Environmental Impact Rating: C

