



HARRISON  
Sales &  
Lettings  
ARDENSON

Primrose Court, Moreton-In-Marsh



This beautifully presented two bedroom house offers a fantastic opportunity for first-time buyers, investors, and downsizers alike. Situated in a quiet cul-de-sac and conveniently located near local train links to London and Oxford, as well as a range of local amenities.

This property has been recently decorated throughout and features new flooring for a fresh and modern feel. The open plan kitchen and diner is equipped with a recently refurbished kitchen, providing space for both cooking and entertaining.

Upstairs the two bedrooms benefit from plenty of natural light, one of which has built in wardrobes and both are serviced by the brand new, contemporary bathroom, ensuring a high standard of comfort and style.

Additional features include a pleasant south facing garden to the rear with the additional calming presence of a brook just behind the garden, creating a peaceful space.

This property is ready to move into, offering a turnkey solution for those seeking a modern lifestyle in a desirable location. Early viewing is highly recommended to fully appreciate the quality and convenience on offer.

Tenure: Freehold

Council Tax Band: C

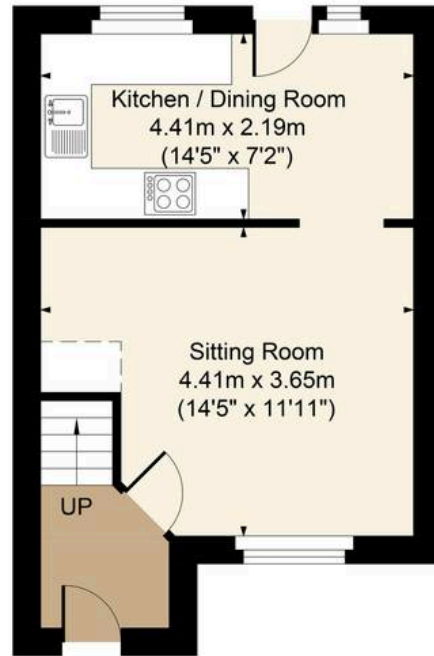
EPC: D

what3words:///arranger.remake.finishes

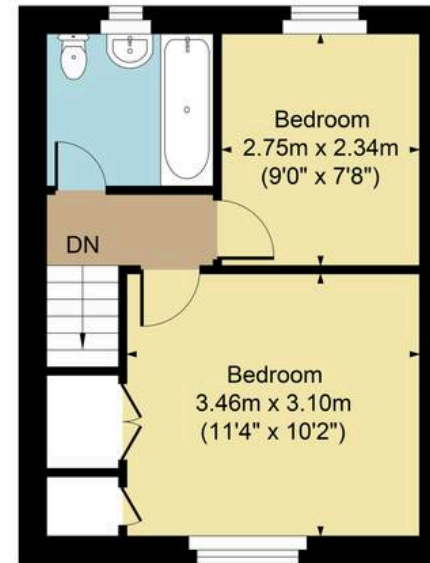




Main House Approx. Gross Internal Area:- 54.05 sq.m. 582 sq.ft.



Ground Floor



First Floor

FOR ILLUSTRATIVE PURPOSES ONLY-NOT TO SCALE

The position & size of doors, windows, appliances and other features are approximate only.

□□□ Denotes restricted head height

[www.dmlphotography.co.uk](http://www.dmlphotography.co.uk)