



**CROMPTON FIELDS**  
DARWEN

BY  
**together**  
*homes*



# Your best life

**Crompton Fields in Darwen, Lancashire, offers a peaceful setting with excellent access to both nature and everyday essentials.**

Located just a short drive from the M65, the development provides convenient links to Blackburn, Preston, and Manchester, making it ideal for commuters. The area is also well-served by local bus routes and Darwen railway station, offering regular services to nearby towns and cities.

Surrounded by green spaces and wooded areas, Crompton Fields is perfect for those who enjoy the outdoors. It is close to walking and cycling routes, and just a short distance from Darwen Tower, accessed via several walking routes from Sunnyhurst Wood, Ryal Fold, and Earnsdale Reservoir, offering panoramic views across the region. Nearby parks such as Bold Venture Park and Square Meadow provide further opportunities for recreation and relaxation.

You will also benefit from nearby primary and secondary schools. Situated just over a mile from Darwen town centre, Crompton Fields is a convenient location for accessing local shops and services, while still enjoying a quieter, more residential setting.

# Your dream home

**At Together Homes, we are passionate about helping you find and move into your dream home, whether you are new to the property ladder or aspiring to move up it.**

Your brand new, energy efficient home boasts a modern fitted kitchen and generous rooms within. To the exterior, you can enjoy private parking and a spacious garden with patio.

**Shared Ownership is a fantastic way to start out on the property ladder if you can't quite afford the mortgage on 100% of a home.**

Put simply you part buy, part rent your home. You purchase a share of the property, then pay a proportionate rent to us for the share you don't own, for example, if you buy an initial 50% share, you will pay rent on the remaining 50% share - the amount of rent depends on the value of your home and is reviewed annually in line with inflation.

**You can buy greater shares in your home as and when you can afford to.**

This process is called Staircasing. In many cases, you can eventually own 100% of your home outright, at which point you will pay only your mortgage, but no rent. Service charges or management fees may still apply.

Shared Ownership can help you start or remain on the property ladder and is a great alternative to buying outright or renting your home.

**Ask the Together Homes team today about Shared Ownership!**



## The Broadoak | 4 Bedroom Semi-Detached



CGI is representative of house type and may not fully reflect the look and finishes of the final build

# The Broadoak | 4 Bedroom Semi-Detached

Upon entering, the hallway provides access to a comfortable living room at the front of the house. The living room is filled with natural light, creating a warm and inviting atmosphere. The heart of the home is the open-plan kitchen/dining room at the rear, which spans the full width of the property, with French doors leading out to the garden. A convenient WC and additional storage space complete the ground floor.

The first floor houses three generously sized bedrooms. Bedroom 2 and Bedroom 3, both spacious and filled with light, are ideal for children or guests, while Bedroom 4 can be easily adapted into a home office or study. A modern family bathroom serves this floor, offering a place of relaxation with contemporary fittings.

The second floor is dedicated to the luxurious master bedroom. This floor features a large double bedroom, complete with an en-suite which includes a shower, basin, and WC, and is rounded off by two storage spaces.



## The Brookmill | 4 Bedroom Semi-Detached



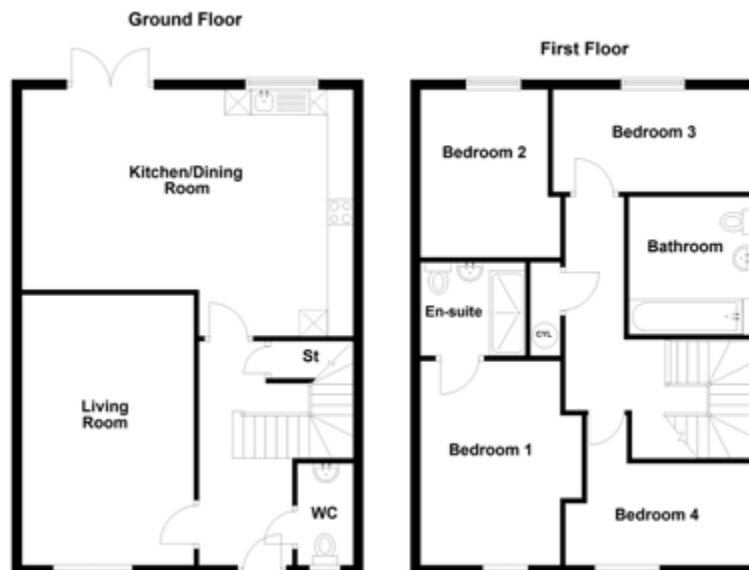
CGI is representative of house type and may not fully reflect the look and finishes of the final build

# The Brookmill | 4 Bedroom Semi-Detached

This is a spacious and modern home, thoughtfully designed for contemporary family living. With an open-plan layout, generous bedrooms, and convenient features throughout, it's a home that perfectly balances comfort and practicality.

The ground floor offers a welcoming hallway that leads to a large living room at the front of the home and a light-filled kitchen/dining room, complete with French doors opening onto the garden; ideal for entertaining. A WC and an under the stairs store cupboard provide added convenience and functionality.

Upstairs, you'll find four comfortable bedrooms, including a spacious main bedroom with an en-suite for added privacy. The family bathroom serves the remaining bedrooms, while a cylinder cupboard offers handy storage space.



# The Cartwright | 2 Bedroom Semi-Detached, End and Mid-Terrace



CGI is representative of house type and may not fully reflect the look and finishes of the final build

# The Cartwright | 2 Bedroom Semi-Detached, End and Mid-Terrace

Upon entering the Cartwright, you are greeted by a welcoming hallway that leads to the main living areas.

The ground floor boasts a spacious living room, ideal for relaxing or entertaining guests. The modern kitchen/dining room is well-equipped with contemporary appliances, providing a perfect space for meal preparation and dining. The ground floor also includes a convenient WC and additional storage space under the stairs.

The first floor of the Cartwright features two well-proportioned bedrooms, each designed with comfort in mind. Bedroom 1 is a generous master bedroom, while Bedroom 2 offers ample space. The landing area connects the rooms and includes additional storage spaces. A modern family bathroom, complete with high-quality fittings, serves both bedrooms, ensuring convenience and comfort.



## The Chadwick | 3 Bedroom Detached



CGI is representative of house type and may not fully reflect the look and finishes of the final build

## The Chadwick | 3 Bedroom Detached

The ground floor of The Chadwick features a spacious living room, ideal for relaxation and entertainment. The modern kitchen/dining room is large and includes French doors leading out onto the private rear garden. Additionally, the ground floor includes a convenient WC, storage space/pantry, accessible from the kitchen.

The first floor of The Chadwick offers three generously sized bedrooms, each designed to provide comfort and privacy. The master bedroom features an en-suite bathroom for added luxury and convenience. Bedroom 2 is also well-sized, providing ample space for family members or guests. Bedroom 3 is slightly smaller, perfect for either a single bed or for use as a home office. The first floor includes a family bathroom containing a bath, basin and WC. Built-in wardrobes in Bedrooms 1 and 2 offer practical storage space.



## The Cotton | 2 Bedroom Semi-Detached



CGI is representative of house type and may not fully reflect the look and finishes of the final build

# The Cotton | 2 Bedroom Semi-Detached

Upon entering the Cotton, you are greeted by a welcoming hallway that leads to the spacious living room, ideal for relaxing or entertaining guests.

The modern kitchen/dining room provides a perfect space for meal preparation and dining. The ground floor also includes a convenient WC and additional storage space under the stairs.

The first floor of the Cotton features two well-proportioned bedrooms, each designed with comfort in mind. Bedroom 1 is generously sized, while Bedroom 2 offers ample space with two storage spaces. The upstairs is rounded off by a family bathroom with bath, basin and WC.



## The Damask | 2 Bedroom Semi-Detached



CGI is representative of house type and may not fully reflect the look and finishes of the final build

# The Damask | 2 Bedroom Semi-Detached

The ground floor is designed for convenience and comfort. The entry hallway leads you into a spacious kitchen/dining room, perfect for cooking and dining. The living room at the rear of the home provides a relaxing space with direct access to the garden through double doors. A convenient WC is located off the hallway, along with a storage area under the stairs and a pantry for additional storage.

The first floor offers two generously sized bedrooms and a modern family bathroom. Bedroom 1, located at the front of the house, features ample space and a built-in wardrobe, offering plenty of storage. Bedroom 2, at the rear, is equally spacious and well-lit, and a bathroom rounds off the upstairs, with a bath, basin and WC.



## The Fellside | 3 Bedroom Detached



CGI is representative of house type and may not fully reflect the look and finishes of the final build

# The Fellside | 3 Bedroom Detached

The Fellside is a stylish and well-proportioned home, designed to suit the needs of modern family living. With bright, open spaces and thoughtful details throughout, it offers a perfect balance of comfort and practicality.

The ground floor features a welcoming hallway leading to a spacious living room and a bright, open kitchen and dining room with French doors opening onto the garden. A separate utility room and WC add convenience to this beautifully designed home.

Upstairs, the main bedroom includes its own en-suite, while two further bedrooms provide comfortable and flexible space for family, guests, or a home office. A contemporary family bathroom completes the floor, along with a handy cupboard for extra storage.



## The Linen | 3 Bedroom Semi-Detached, End and Mid-Terrace

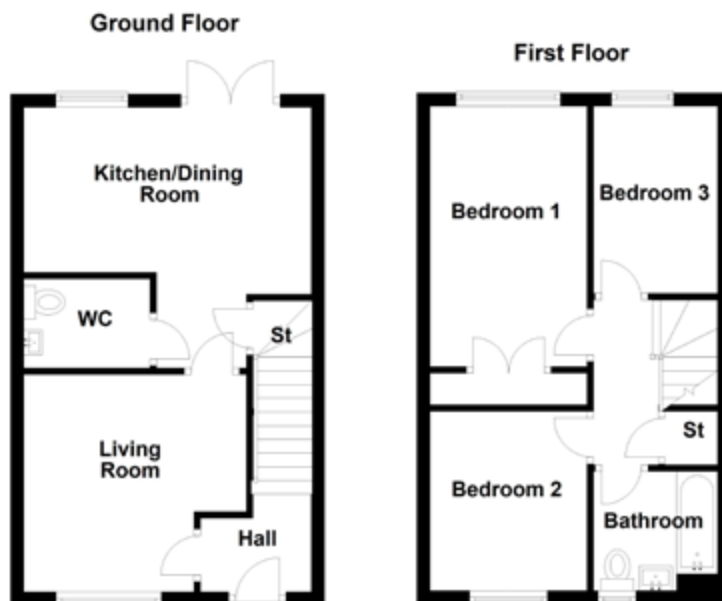


CGI is representative of house type and may not fully reflect the look and finishes of the final build

## The Linen | 3 Bedroom Semi-Detached, End and Mid-Terrace

The ground floor of The Linen features a large living room, perfect for relaxation and entertaining guests. The modern kitchen/dining room is generously sized, providing a family-friendly space. Additionally, the ground floor includes a convenient WC, and a storage area located under the stairs.

The first floor includes three well-proportioned bedrooms. Bedroom 1 is a spacious master bedroom, while Bedroom 2 and Bedroom 3 provide additional space for a growing family including space for a home office. The landing area connects the rooms and includes extra storage space for convenience. A modern family bathroom features a shower over the bath, basic and toilet.



## The Loom | 3 Bedroom Semi-Detached, End and Mid-Terrace

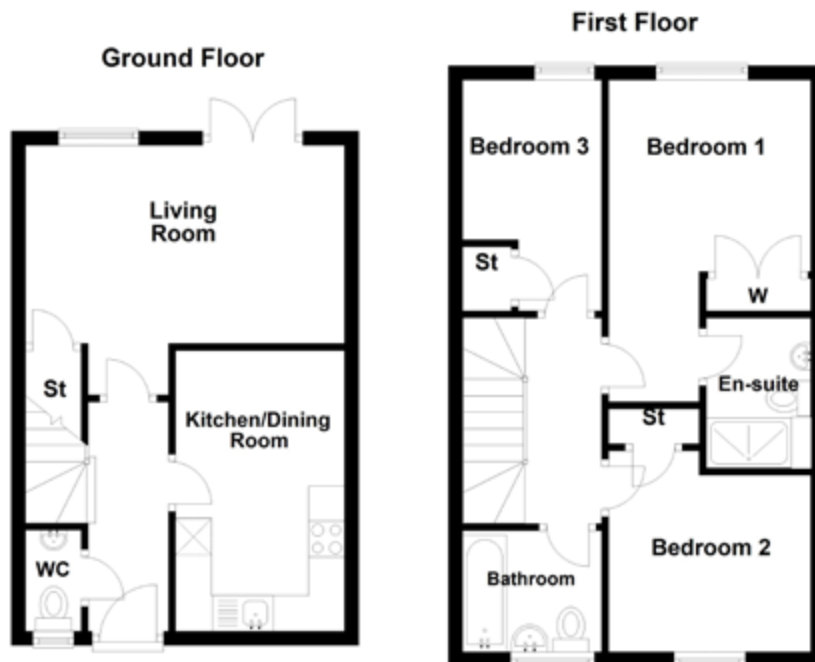


CGI is representative of house type and may not fully reflect the look and finishes of the final build

# The Loom | 3 Bedroom Semi-Detached, End and Mid-Terrace

The ground floor of The Loom features a bright and airy living room, with French doors leading out onto the private rear garden. The modern kitchen/dining room is well-equipped for all your culinary needs, a downstairs WC is conveniently located on this floor, along with a storage space under the stairs.

The upstairs offers three well-sized bedrooms. Bedroom 1 is a spacious master bedroom with an en-suite bathroom, containing a basin, w.c and shower, while Bedroom 2 & Bedroom 3 contain a storage cupboard each. The upstairs is rounded off by a family bathroom, containing a bath, basin and w.c.



## The Reed | 4 Bedroom Semi-Detached



CGI is representative of house type and may not fully reflect the look and finishes of the final build

## The Reed | 4 Bedroom Semi-Detached

The ground floor of The Reed features a bright and airy living room. The modern kitchen/dining room is well-equipped, including a storage cupboard / pantry, and the open layout makes it ideal for entertaining. French doors from the dining area provide easy access to the garden. A downstairs WC is conveniently located on this level, along with a storage space under the stairs.

The first floor offers four well-sized bedrooms. Bedroom 1 is a spacious master bedroom with a storage cupboard and en-suite bathroom, containing a shower, basin and toilet. Bedroom 2 and 4 are double rooms, while Bedroom 3 is slightly smaller, perfect for a home office, and contains a storage cupboard. The landing area, which connects all rooms, includes an additional storage cupboard. A family bathroom rounds off the upstairs, equipped with a shower over the bath, basin and toilet.



## The Weaver | 3 Bedroom Semi-Detached

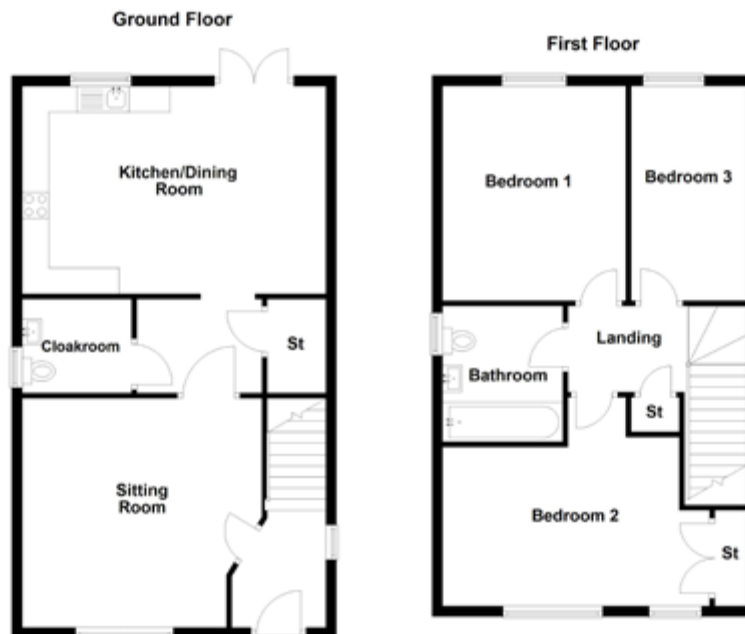


CGI is representative of house type and may not fully reflect the look and finishes of the final build

## The Weaver | 3 Bedroom Semi-Detached

The ground floor of The Weaver features a bright and airy sitting room. The modern kitchen/dining room is well-equipped, and the open layout makes it ideal for entertaining. French doors from the dining area provide easy access to the garden. A cloakroom / WC is conveniently located on this level, along with a storage space under the stairs.

The first floor of the Weaver offers three well-sized bedrooms. Bedroom 1 is a spacious master bedroom, while Bedroom 2 and Bedroom 3 provide ample space for family members or guests. The landing area, which connects all rooms, includes additional storage spaces. A family bathroom, equipped with modern fittings, serves all bedrooms, ensuring comfort and convenience.









LANDSCAPE  
MAN

MAKING  
A GARDEN

MAKING A GARDEN MATTHEW WILSON

JOHN P  
HROVAK

AN

MAKING

THE



...WILSON  
MATTHEW WILSON



together  
& homes

[www.mytogetherhome.co.uk](http://www.mytogetherhome.co.uk)

[hello@mytogetherhome.co.uk](mailto:hello@mytogetherhome.co.uk)

0300 330 5533