



**16 RHODRONS AVENUE
CHESSINGTON
KT9 1BA
£875,000**

EXTENDED DETACHED BUNGALOW

FIVE BEDROOMS

ONE BEDROOM ANNEXE WITHIN THE ACCOMMODATION

TWO RECEPTION ROOMS

25'5 X 12'6 MODERN KITCHEN DINING ROOM

FOUR BATH/SHOWER ROOMS

DOUBLE GLAZED WINDOWS

GAS CENTRAL HEATING

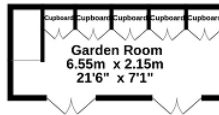
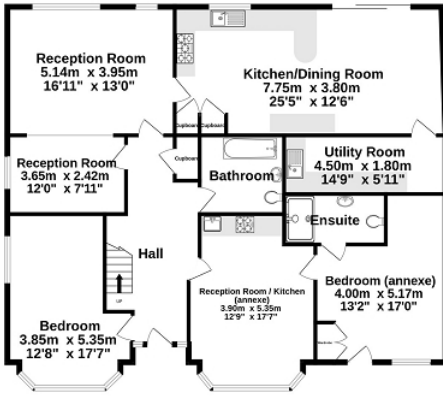
60' X 48' REAR GARDEN

OFF STREET PARKING

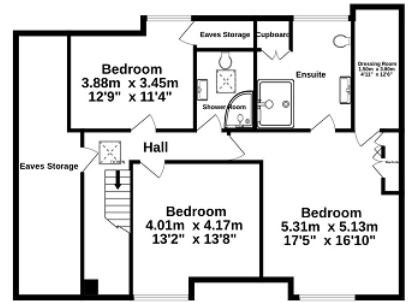
WELL PRESENTED

SOUGHT AFTER LOCATION

Ground Floor
178.0 sq.m. (1916 sq.ft.) approx.



1st Floor
98.6 sq.m. (1061 sq.ft.) approx.



TOTAL FLOOR AREA : 276.6 sq.m. (2977 sq.ft.) approx.

Whilst every attempt has been made to ensure the accuracy of the floorplan contained here, measurements of doors, windows, rooms and any other items are approximate and no responsibility is taken for any error, omission or mis-statement. This plan is for illustrative purposes only and should be used as such by any prospective purchaser. The services, systems and appliances shown have not been tested and no guarantee as to their operability or efficiency can be given.
Made with Metropix ©2026