



Manor Road, TW2

£320,000

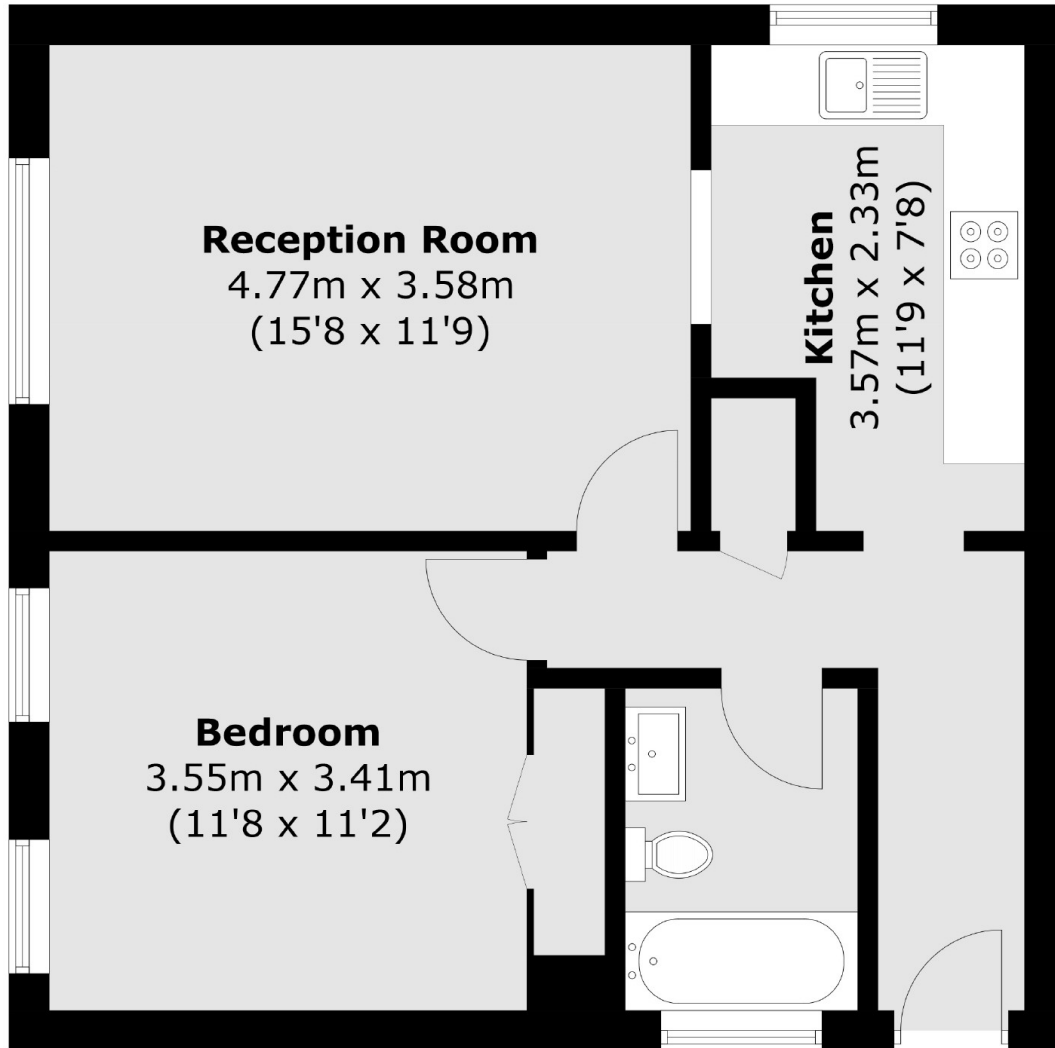
This impressive one double bedroom first floor apartment is situated down a popular road and would be a perfect first time purchase or investment. The property benefits from having residents parking, access to communal gardens and a long lease.

Selby Court is on Manor Road which is close to excellent schools and has fantastic bus links. Twickenham Green and the Station/ high street are less than a mile away which offers a wide variety of shops, pubs and restaurants.

Features

- One Double Bedroom
- Excellent Condition
- Residents Parking
- Communal Gardens
- Popular Road
- Long Lease

Manor Road, Twickenham, TW2



Total area (approx.): 52.2 sq. m (561.9 sq. ft)