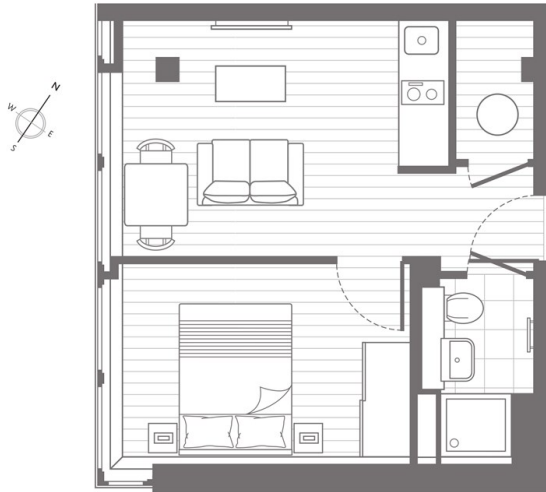




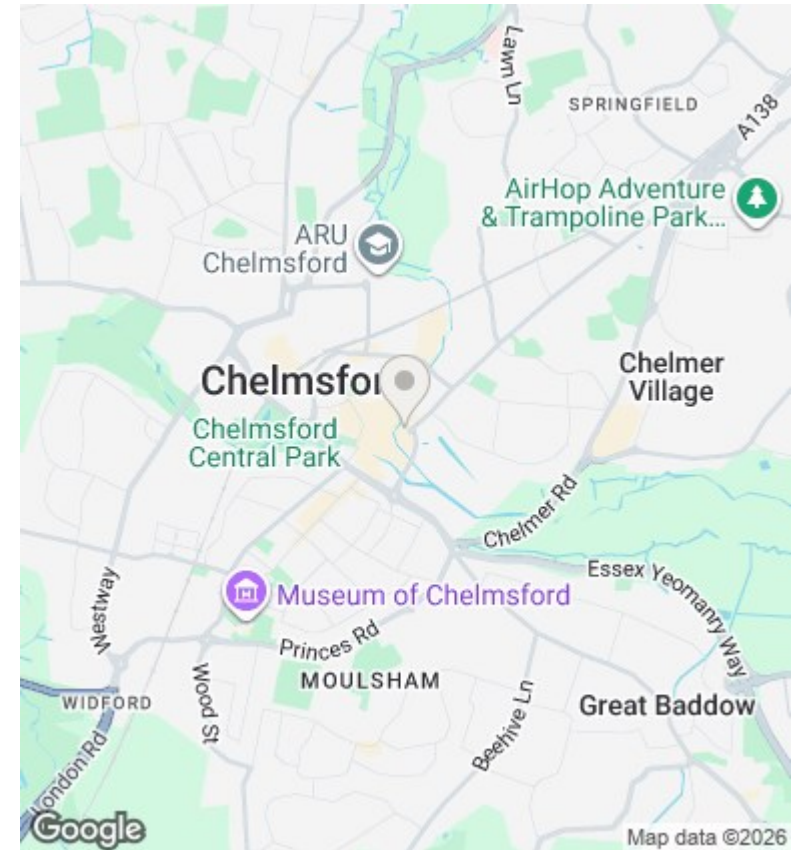
## Flat 38, Rosebery House, 41 Springfield Road, Chelmsford, CM2 6ZP

£1,100 PCM

- CITY CENTRE
- MODERN THROUGHOUT
- FITTED KITCHEN
- AVAILABLE NOW
- FULLY FURNISHED



Total area: 30.7 sq.m. 331 sq.ft



## Directions

## Viewings

Viewings by arrangement only. Call 01376 337400 to make an appointment.

## Council Tax Band

B

## EPC Rating:

C

Energy Efficiency Rating		Current	Potential
<i>Very energy efficient - lower running costs</i>			
(92 plus) <b>A</b>			
(81-91) <b>B</b>			
(69-80) <b>C</b>		79	79
(55-68) <b>D</b>			
(39-54) <b>E</b>			
(21-38) <b>F</b>			
(1-20) <b>G</b>			
<i>Not energy efficient - higher running costs</i>			
<b>England &amp; Wales</b>		EU Directive 2002/91/EC	