



Charlotte Street, W1T

£650 Per week

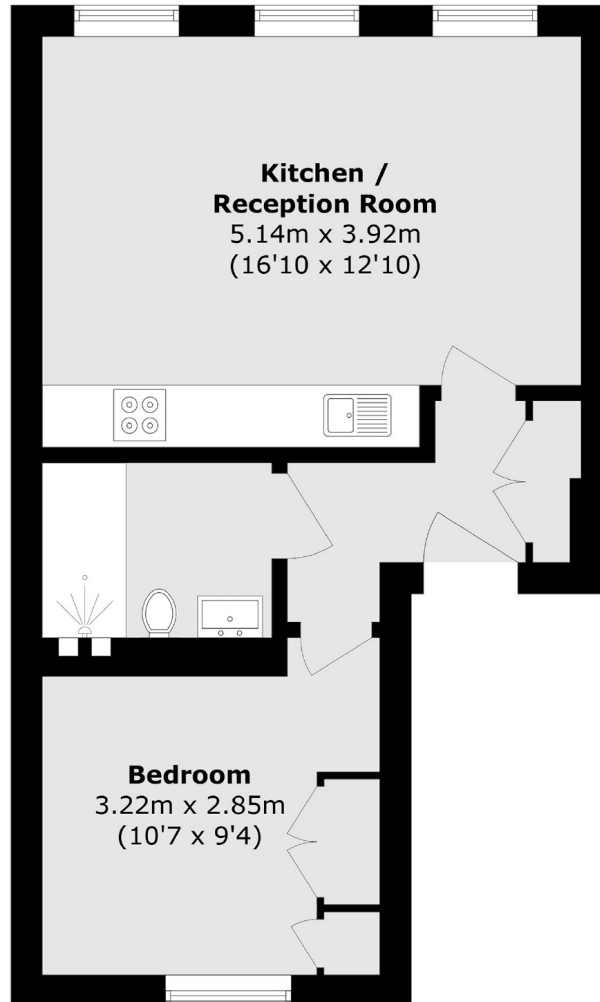
A well proportioned and well maintained one bedroom flat, located on the third floor. The space is flooded with natural light, creating an inviting and airy atmosphere. This property is perfectly suited for singles or couples who are looking to make the most of West End living in a quieter location.

Goodge Street underground station is 0.2 miles away and walking distance to Oxford Street which is surrounded by an abundance of restaurants, bars and shops. Warren Street and Tottenham Court Road are also close by.

Features

- Open Plan
- Unfurnished
- Centrally Located
- Third Floor
- Modern
- Bright

Charlotte Street, London, W1T



Total area (approx.): 38.5 sq. m (414.4 sq. ft)