



Linden Grove, SE15

£2,000 Per calendar month

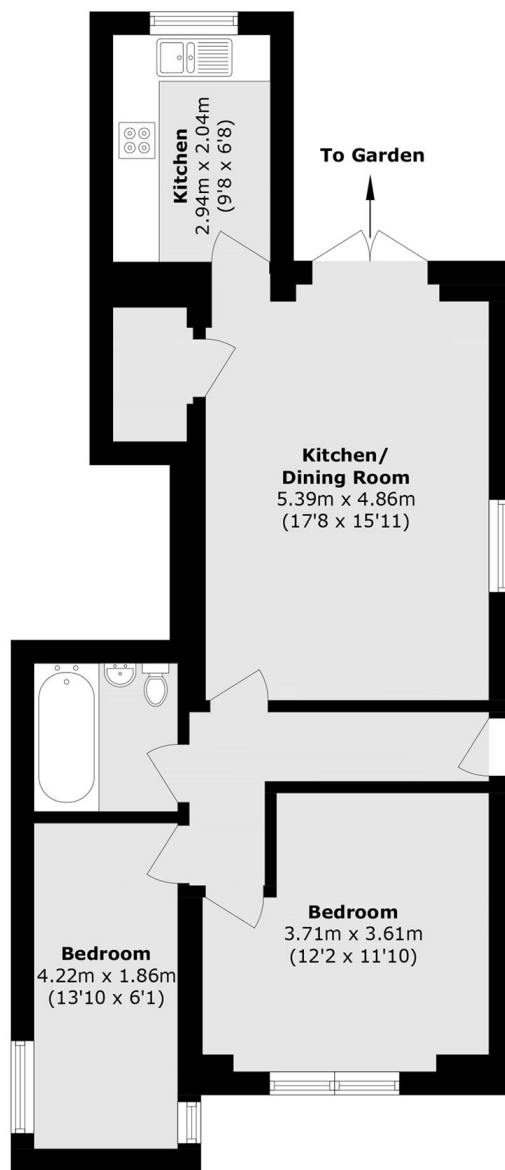
A lovely 2 double bedroom 1 bathroom located within a period building perfect home for a professional couple or single. A flat with a modern feel. Smart bathroom and ample well laid out fitted kitchen, throughout make this the perfect abode to settle into, additional benefits include a communal garden!

Close to Nunhead Station and walking distance to Peckham Rye, all you need is within easy reach of transport, bars, shops, schools and the buzz of Nunhead, Peckham Rye & East Dulwich.

Features

- 2 Double Bedrooms
- Communal Garden
- Great Transport Links
- Light and Bright
- Unfurnished
- On-Street Parking

Linden Grove, London, SE15



Total area (approx.): 60.5 sq. m (651.2 sq. ft)