



Beaufort Square, NW9

£450,000

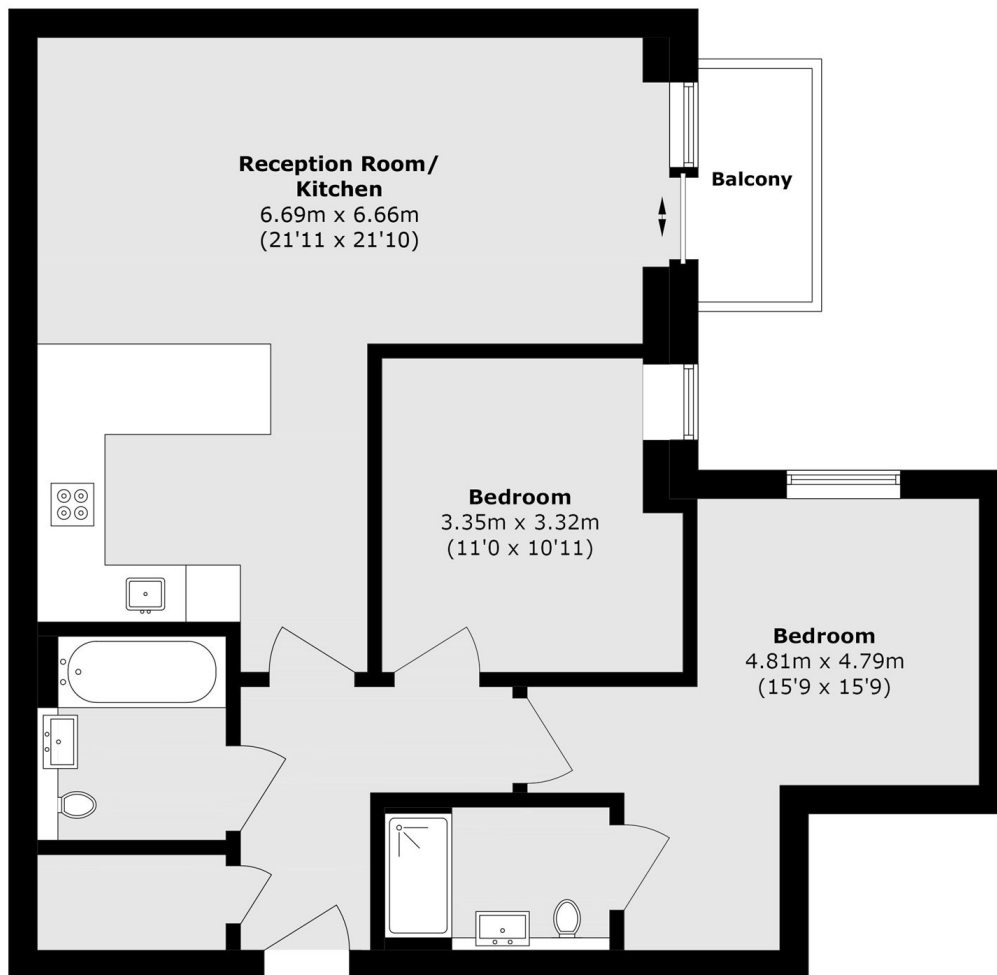
A superb two bedroom luxury apartment in this modern purpose-built block. This fabulous property benefits from underground resident parking, a balcony, beautiful communal gardens and access to the on-site gym and spa.

Beaufort Square is conveniently located within close access of Colindale Underground Station (roughly 0.6 miles) and many local amenities.

Features

- Beaufort Park Development
- Two Bedrooms
- Two Bathrooms
- Balcony
- Secure Parking
- Access To Gym, Pool And Spa

Beaufort Square, London, NW9



Total area (approx.): 76.0 sq. m (818.0 sq. ft)

Balcony area (approx.): 2.9 sq. m (31.2 sq. ft)