



## Mornington Avenue, W14

£3,000 Per calendar month

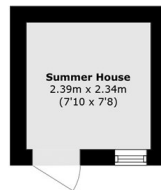
This two bedroom property on the raised ground floor of a period conversion offers a outhouse ideal for working from home, private garden, large reception room and high ceilings throughout. This property is ideal for a couple looking for a superior rental property.

Mornington Avenue is a sought after residential road located north of the A4 and is close to West Kensington and Kensington Olympia stations, along with numerous shops, bars, restaurants and open spaces on Kensington High Street.

### Features

- Two Bedrooms
- One Bathroom
- Garden
- Raised Ground Floor
- Additional Out House
- High Ceilings

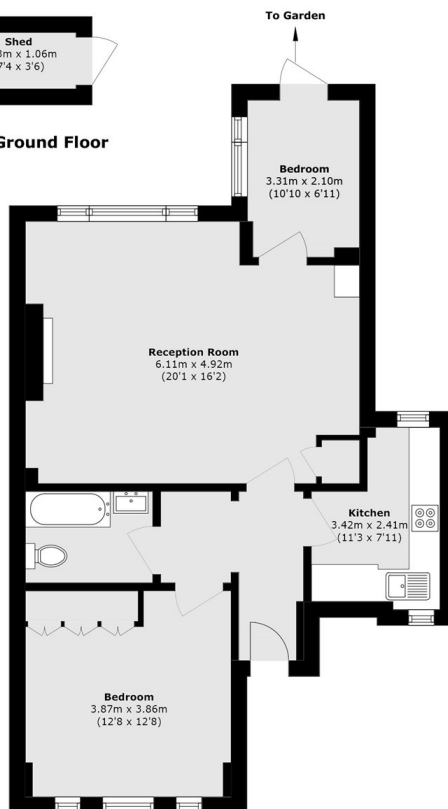
# Mornington Avenue, London, W14



**Raised Ground Floor**



**Raised Ground Floor**



**Raised Ground Floor**

Total area (approx.): 70.3 sq. m (756.7 sq. ft)  
Summer House area (approx.): 5.5 sq. m (59.2 sq. ft)  
Shed area (approx.): 2.3 sq. m (24.7 sq. ft)