

You can include any text here. This is



ed upon generating your brochure.



Apartment 7, 21-22 Park Row





7, 21-22 Park Row

Leeds

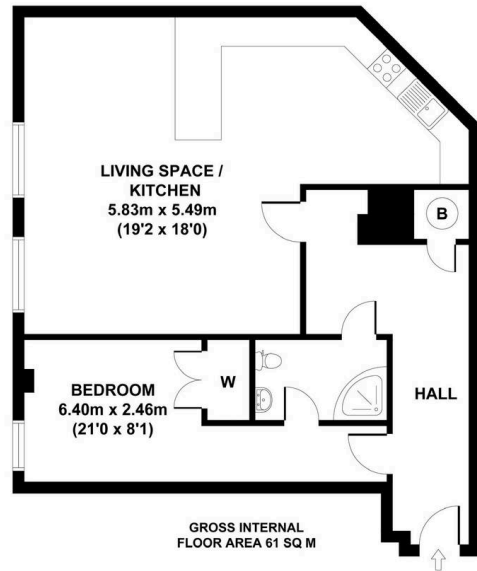
Council Tax band: E

- Historic architecture & ornate architectural details
- Central City Centre location
- Large windows (abundant natural light)
- Open plan living area
- Modern kitchen with island
- Integrated appliances
- Contemporary bathroom with modern shower
- Wooden flooring throughout
- Large built-in wardrobe
- Zero deposit available via Reposit









GROSS INTERNAL
FLOOR AREA 61 SQ M

APARTMENT 7, 21-22 PARK ROW, LEEDS, LS1 5HA
APPROX. GROSS INTERNAL FLOOR AREA 61 SQ M / 657 SQ FT



Country Home

98 King Street, Knutsford - WA16 6HQ

0330 111 4444

help@countryhome.co

countryhome.co



You can include any text here. This is



ed upon generating your brochure.