



Putney Park Lane, SW15
£800,000

Dexters



Putney Park Lane, SW15

Located on the ever popular Putney Park Lane, this beautifully presented period home offers stylish, well-balanced accommodation of approximately 875 sq ft, thoughtfully designed for modern living. Combining period character with contemporary finishes, the property provides a warm and welcoming home in one of Putney's most desirable residential settings.

The heart of the home is a bright and spacious open plan kitchen and dining room, extended to the rear to create a superb everyday living space. Skylights and full-width bi-folding doors flood the room with natural light and open directly onto the private west facing garden, creating a seamless connection between indoor and outdoor living. The modern kitchen features a central peninsula, integrated appliances and excellent storage, making it equally suited to relaxed family life or entertaining guests. Underfloor heating runs throughout the ground floor, adding comfort and a sense of quality to the space.

To the front of the property, a versatile reception room provides flexible accommodation to suit a variety of needs, whether as a sitting room, guest room or home office. The ground floor is further complimented by a convenient guest WC and a separate laundry and boot room.

Upstairs, the property continues to offer well-proportioned bedrooms and a modern family bathroom, completing a layout that feels both practical and

Features

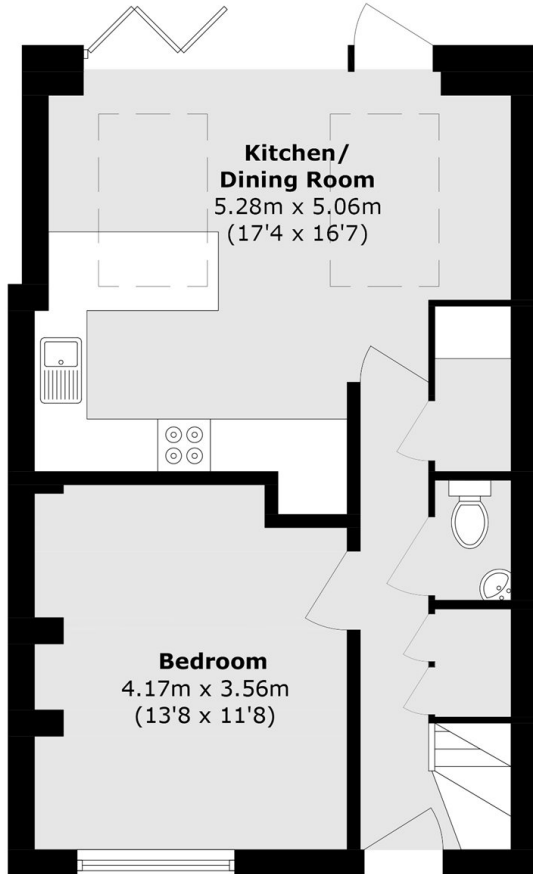
- 875 Sq.Ft
- Three Bedrooms
- West Facing Garden
- Freehold
- W/C
- Recently Renovated



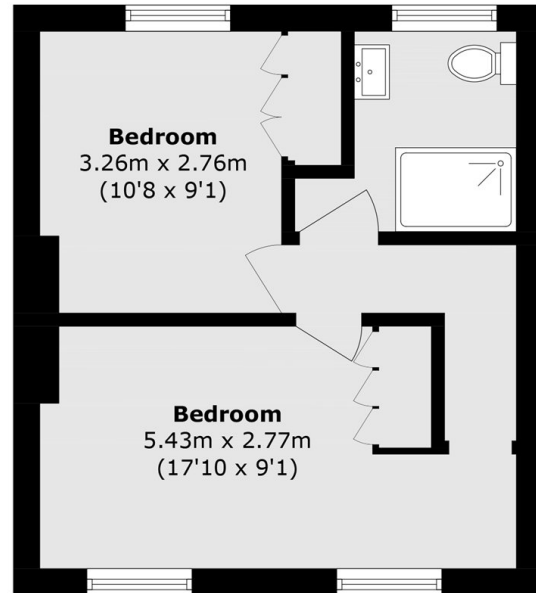




Putney Park Lane, London, SW15



Ground Floor



First Floor

Total area (approx.): 81.3 sq. m (875.1 sq. ft)