



Clifton Avenue, Eccles

Manchester



In Excess of £325,000

Clifton Avenue

Eccles, Manchester

Beautifully presented three bed terrace in Monton Village with two receptions, modern kitchen, cellar, and stylish bathroom. Close to shops, schools, and transport links. Ideal for families or investors.

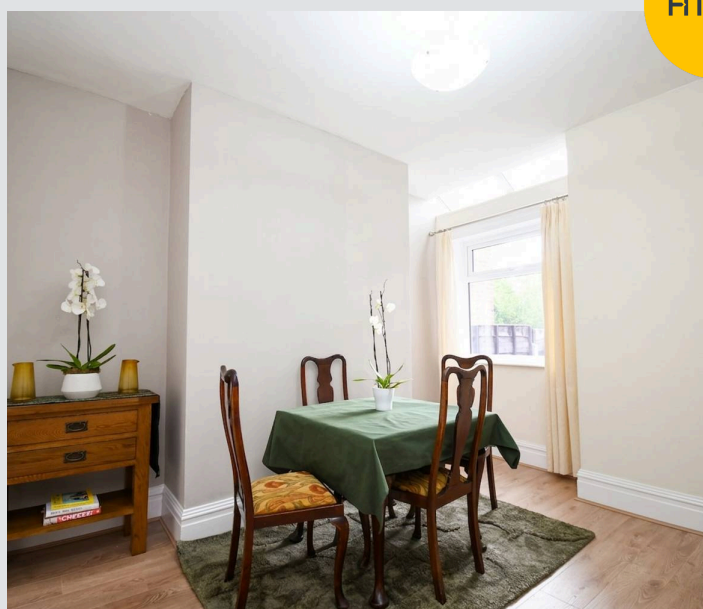
Council Tax band: A

Tenure: Freehold

- Located on a Quiet Cul De Sac within the Heart of Monton Village
- Bay Fronted Lounge and Second Reception Room
- Fitted Modern Kitchen and Three Piece Bathroom Suite
- Cellar Suitable for Storage
- Three Generously Sized Bedrooms
- Low Maintenance, Sun Drenched Private Rear Garden
- Just a Short Walk to Shops, Bars and Restaurants
- Well Served by Excellent Public and Motorway Links



HILLS



Entrance Hallway

Reception Room One

14' 3" x 10' 8" (4.34m x 3.25m)

Reception Room Two

12' 8" x 11' 0" (3.86m x 3.35m)

Kitchen

13' 0" x 8' 5" (3.96m x 2.57m)

Landing

Bedroom One

14' 7" x 11' 8" (4.45m x 3.56m)

Bedroom Two

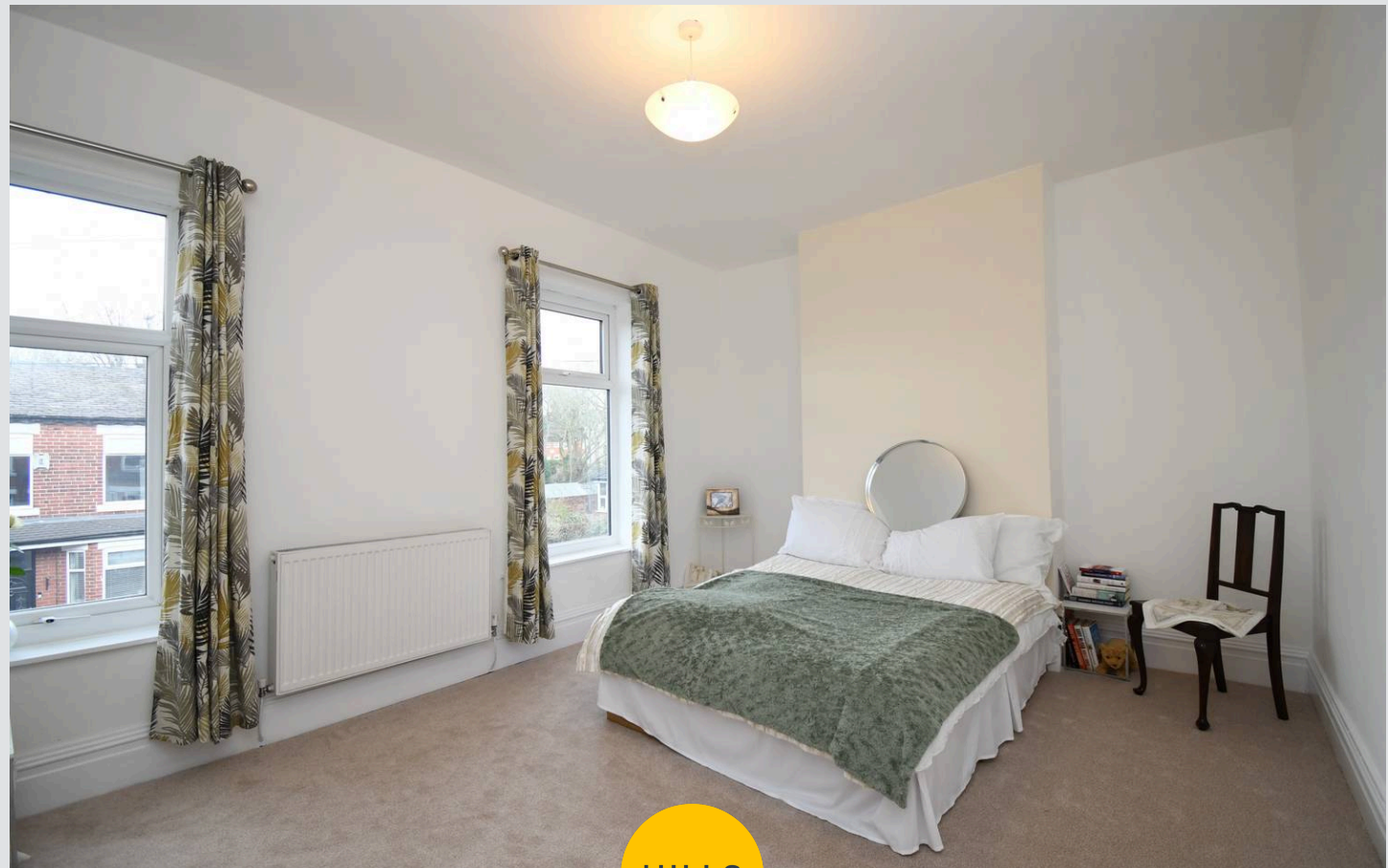
11' 5" x 9' 3" (3.48m x 2.82m)

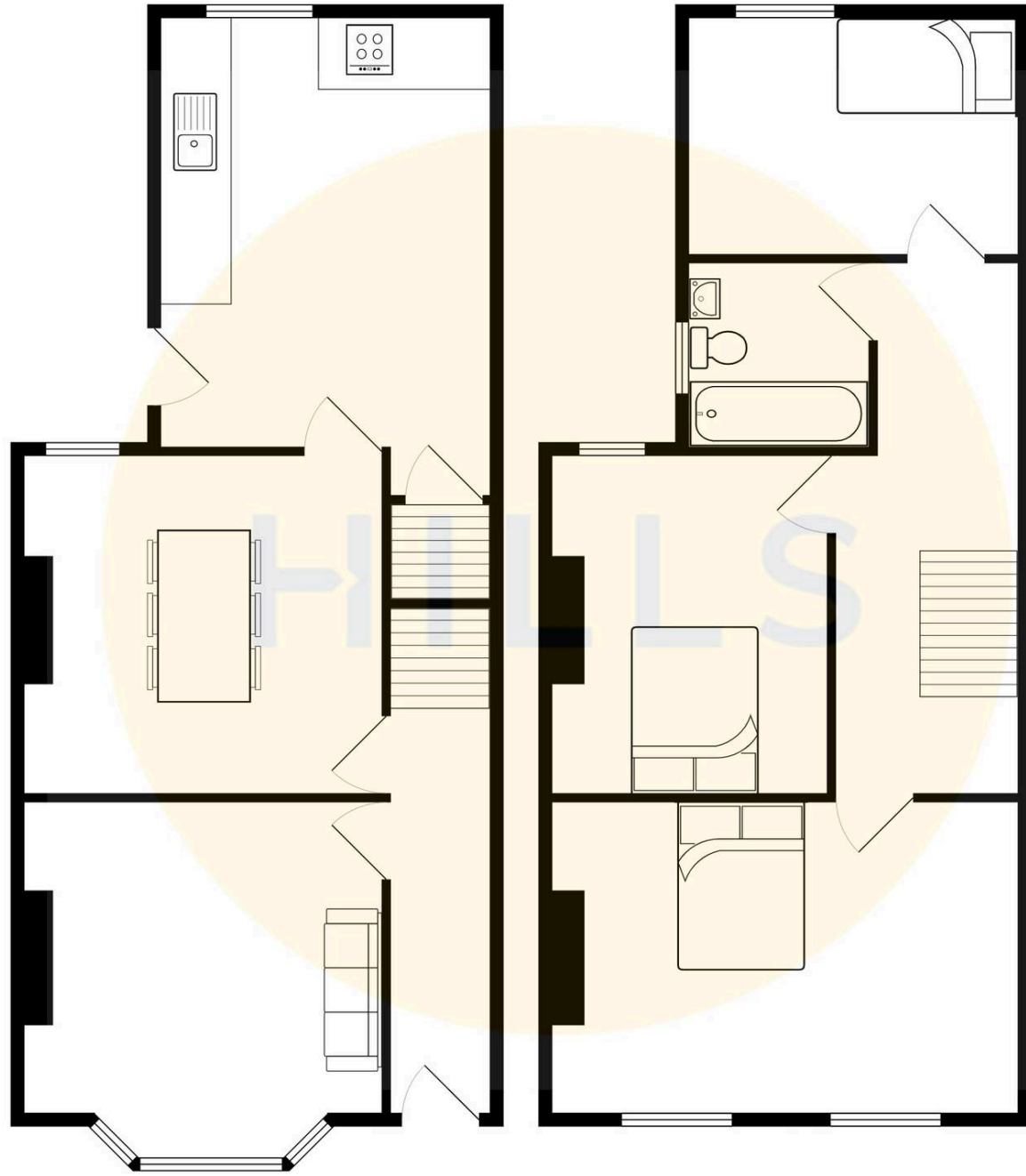
Bedroom Three

8' 6" x 6' 9" (2.59m x 2.06m)

Bathroom

5' 6" x 5' 5" (1.68m x 1.65m)







Hills | Salfords Estate Agent

Hills Residential, Sentinel House Albert Street – M30 0SS

0161 707 4900

sales@hills.agency

www.hills.agency/



By law, we are required to conduct anti-money laundering checks on all potential buyers and sellers. In line with HMRC guidelines, our trusted partner, Coadjute, will securely manage these checks on our behalf. A non-refundable fee of £45 + VAT per person will apply, and Coadjute will handle the payment. Once an offer is accepted, Coadjute will send a secure link for you to complete the biometric checks. These checks must be completed before we can send the memorandum of sale to all parties. PLEASE NOTE: The Agent has not tested any equipment, fixtures, fittings or services so cannot verify that they are in working order or fit for the purpose. References to the properties tenure are based on information supplied by the seller. You are advised to check the availability of this property before travelling any distance to view. Every effort has been made to ensure these particulars are correct and not misleading but their accuracy is not guaranteed nor do they form part of any contract.