



## Kew Bridge Road, TW8

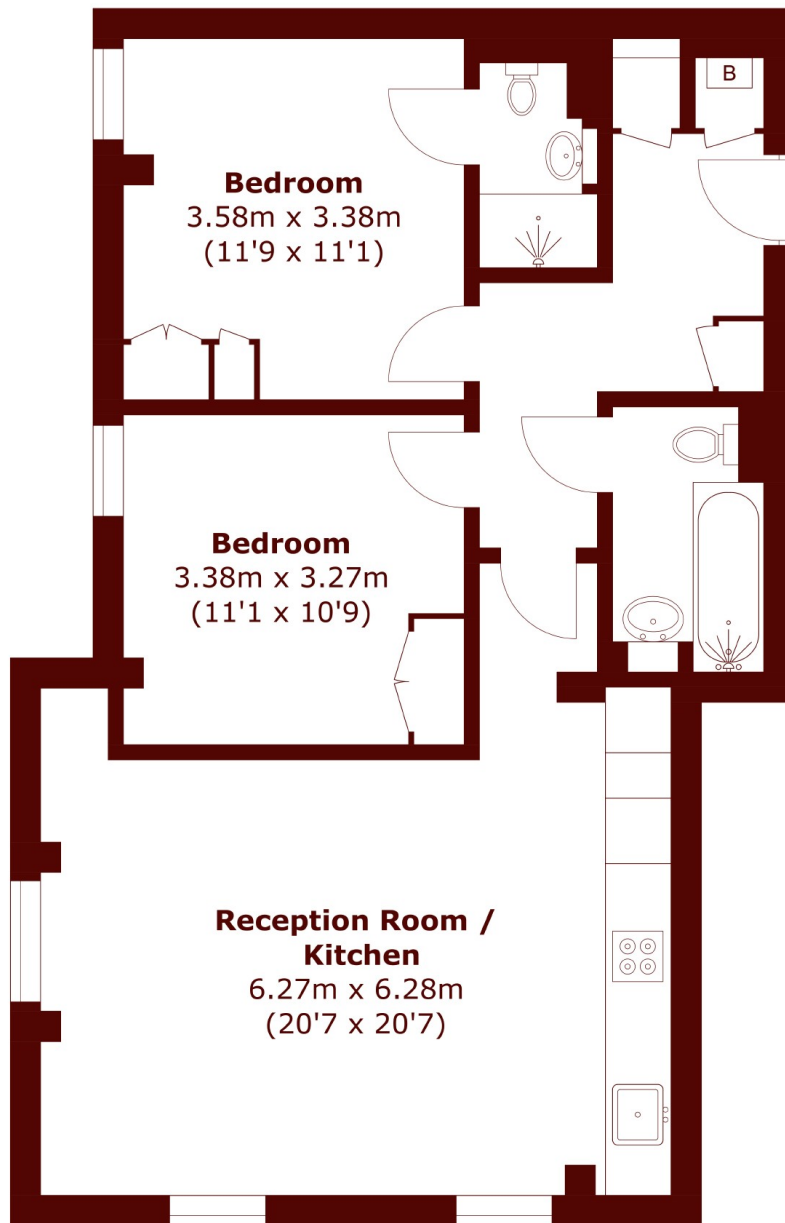
£500,000

2 2 1 B

• Two Bedrooms

• Two Bathrooms

• River Views



Total area (approx.): 72.3 sq. m (778.2 sq. ft)

**Marsh & Parsons Chiswick**

34-38 Turnham Green  
Terrace, London, W4 1QP  
020 8994 2556