



Clapham Park Road, SW4

£2,000 Per calendar month

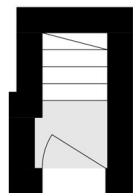
Set on the first floor, this spacious one bedroom flat would be ideal for a professional couple. Offering wooden flooring, an open plan reception room and kitchen with space for dining and neutral interior throughout.

Clapham Park Road is just off the vibrant Clapham High Street and runs down towards the very popular Abbeville Road. Transport can be found nearby at Clapham Common, which is only a stroll from the property.

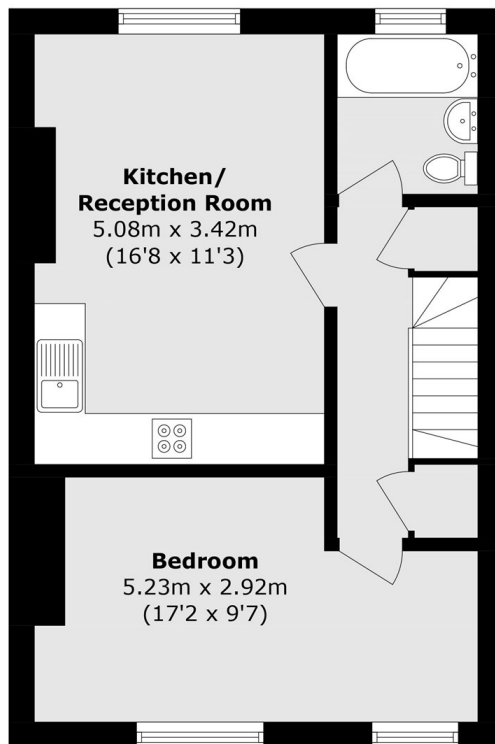
Features

- One Double Bedroom
- Open Plan Reception
- Eat-In Kitchen
- First Floor Flat
- Wooden Flooring
- Close To Transport

Clapham Park Road, London, SW4



Raised Ground Floor



First Floor

Total area (approx.): 43.8 sq. m (471.5 sq. ft)