



Dents Hill

Guide Price £230,000 - £240,000

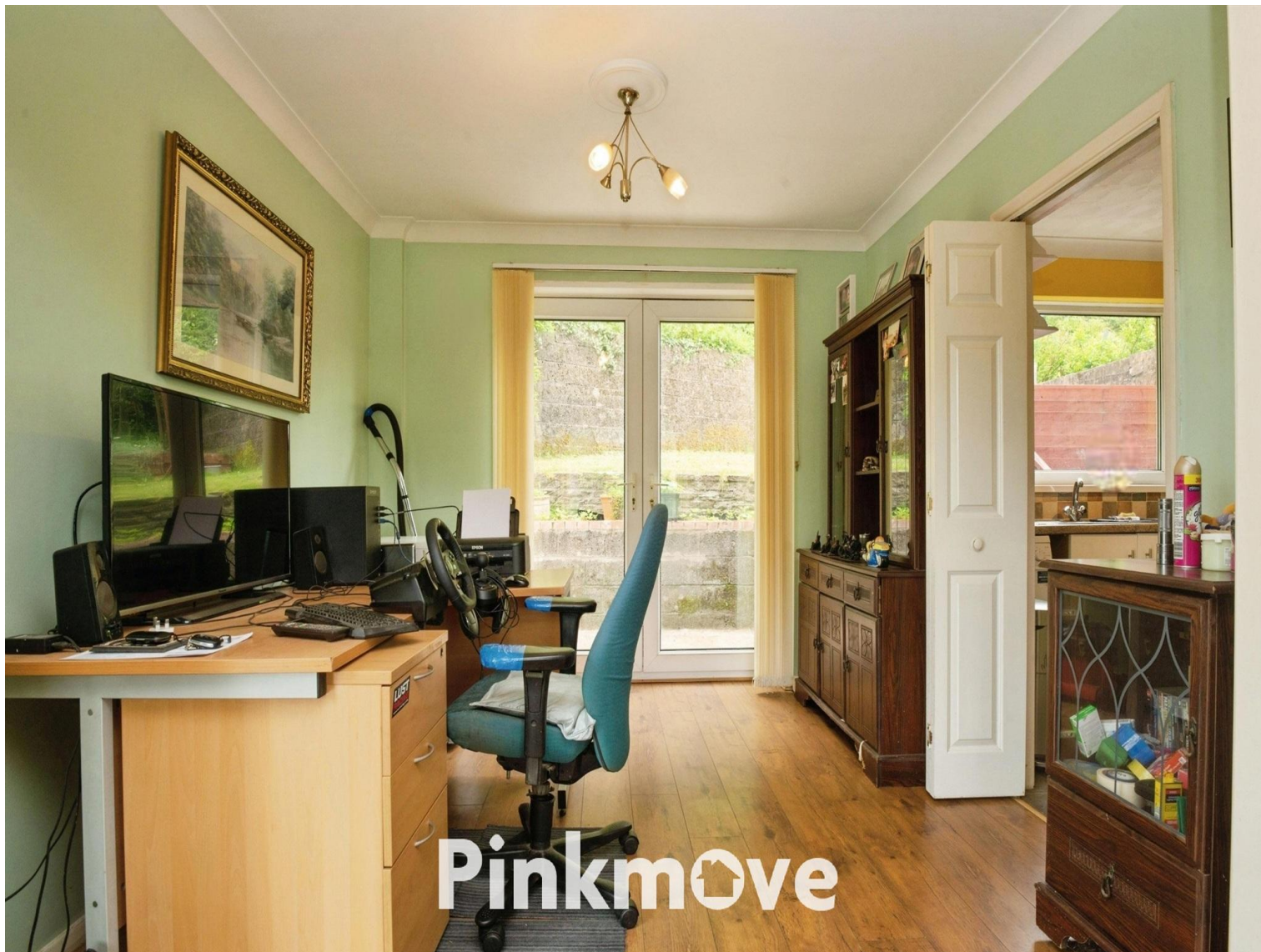
- Guide Price: £230,000 - £240,000
- Three bedroom detached home
- Sought after residential location
- Spacious lounge with conservatory
- Detached single garage
- Excellent access to M4 motorway
- EPC Rating: Awaited



3 1 3

Pinkmove

01633 746088
team@pinkmove.co.uk



Pinkmove

About the property

Situated in a highly sought-after location with excellent access to the M4, this well-presented three-bedroom detached home offers spacious and versatile accommodation, ideal for families or professionals. The property is conveniently located close to Spytty Retail Park and just a short distance (approximately three miles) from Newport Bus and Railway Stations.

The accommodation briefly comprises a welcoming and spacious entrance hall providing access to all ground floor rooms. The lounge is bright and well proportioned, offering a comfortable living space and leading into a conservatory to the rear, which provides additional reception space and direct access to the side garden—perfect for relaxing or entertaining.

The kitchen is well presented and fitted with a range of wall and base units, offering ample storage and workspace.

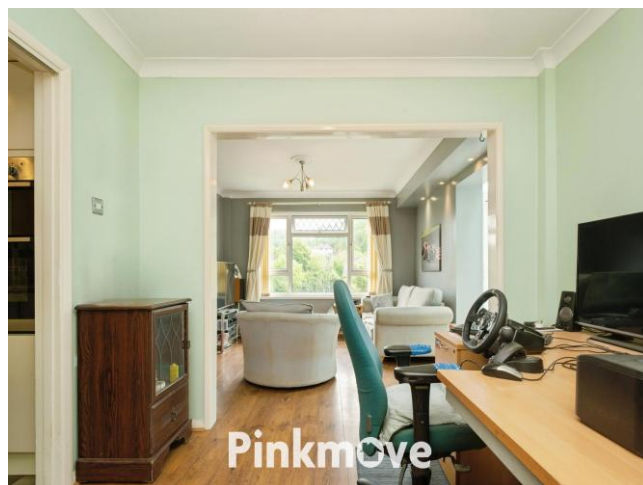
To the first floor are three bedrooms, including two generously sized doubles and a third smaller bedroom, ideal for use as a home office, nursery or dressing room. A family bathroom completes the first floor accommodation.

Externally, the property benefits from an end plot position, offering a degree of privacy. There is a single detached garage and enclosed garden space to the side, providing potential for further landscaping or outdoor enjoyment.

This is a fantastic opportunity to acquire a ready-to-move-into home in a convenient and popular location. Early viewing is highly recommended to fully appreciate everything this property has to offer.



Pinkmove



Pinkmove



Accommodation

Lounge

Dining Room

Kitchen

Conservatory

Bedroom 1

Bedroom 2

Bedroom 3

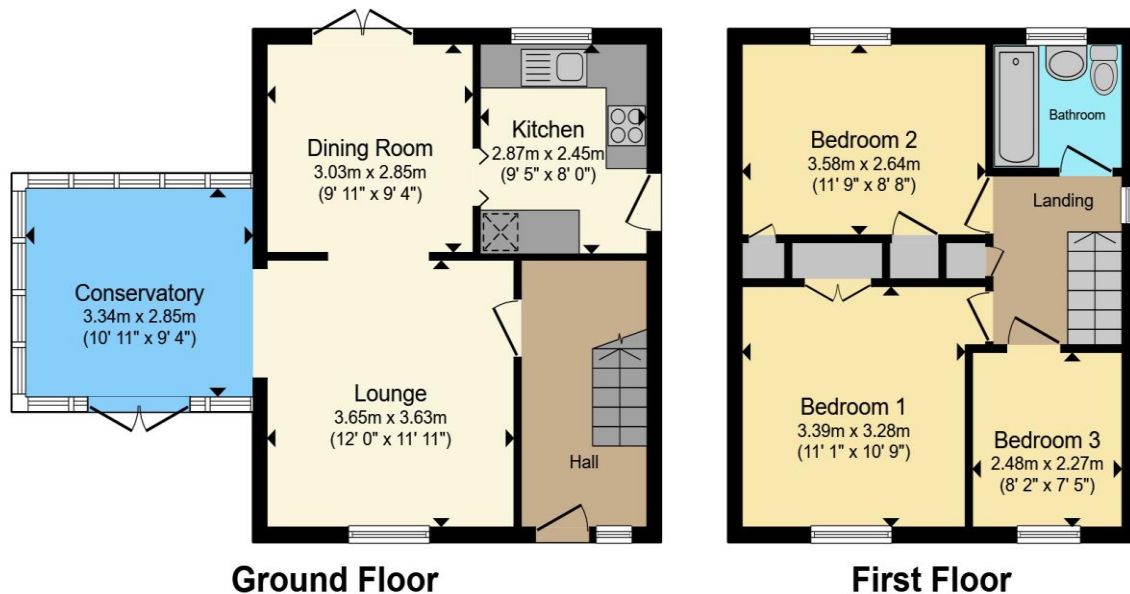
Bathroom

01633 746088

team@pinkmove.co.uk

Pinkmove

Floorplan



Total floor area 83.7 sq.m. (901 sq.ft.) approx

This floor plan is for illustrative purposes only. It is not drawn to scale. Any measurements, floor areas (including any total floor area), openings and orientation are approximate. No details are guaranteed, they cannot be relied upon for any purpose and they do not form part of any agreement. No liability is taken for any error, omission or misstatement. A party must rely upon its own inspection(s). Powered by www.focalagent.com

Pinkmove

Important Information

Note while we endeavour to make our sales details accurate and reliable, if there is any point which is of particular interest to you, please contact the office and we will be pleased to confirm the position for you. We have not personally tested any apparatus, equipment, fixtures, fittings or services and cannot verify they are in working order or fit for their purposes. Nothing in these particulars is intended to indicate that carpets or curtains, furnishings or fittings, electrical goods (whether wired or not). Gas fires or light fittings or any other fixtures not expressly included form part of the property offered for sale. This computer generated Floorplan, if applicable, is intended as a general guide to the layout and design of the property. It is not to scale and should not be relied upon for dimensions. Tenure: We cannot confirm the tenure of the property as we have not had access to the legal documents. The buyer is advised to obtain verification from their solicitor or surveyor.

Peter Alan Limited is registered in England and Wales under company number 2073153, Registered Office is Cumbria House, 16-20 Hockliffe Street, Leighton Buzzard, Bedfordshire, LU7 1GN. VAT Registration Number is 500 2481 05. For activities relating to regulated mortgages and non-investment insurance contracts, Peter Alan Limited is an appointed representative of Connells Limited which is authorised and regulated by the Financial Conduct Authority. Connells Limited's Financial Services Register number is 302221. Most buy-to-let

