

BRENNAN

BESPOKE

£375,000

Beardsley Gardens

Kettering, NN15 5UB

If you want a home in a quiet cul-de-sac setting with a lovely garden and practical parking, welcome to Beardsley Gardens. Situated in Barton Seagrave, this immaculately presented, detached family home offers a well-balanced layout with comfortable reception space, a driveway leading to a garage providing off-road parking, and a rear garden that really stands out for its maturity and privacy. The ground floor includes a welcoming entrance hall with a convenient WC, a living room and a separate dining room, along with a fitted kitchen, creating a practical arrangement for family life and entertaining. Upstairs, the property offers four bedrooms, including a principal bedroom with en-suite, along with a family bathroom serving the remaining rooms, providing flexible accommodation for families, guests or home working. Externally, the rear garden is a key feature beautifully established with a lawn and mature trees and shrubs, creating a private and relaxing space to enjoy throughout the year.

4



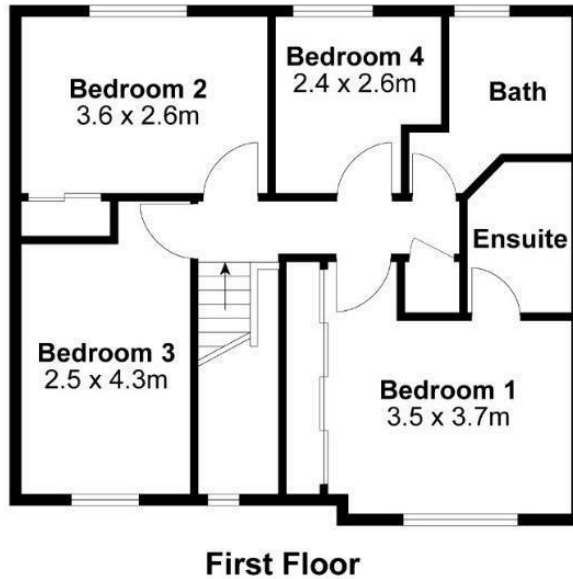
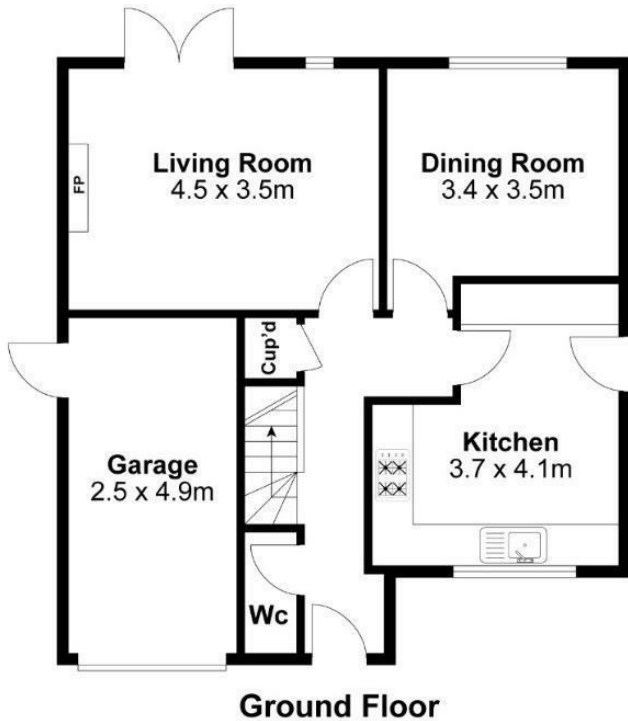
2



2







Internal Area Approx. : 116m²

For identification only not to scale

BRENNAN
BESPOKE

BRENNAN
BESPOKE

OFFICE ADDRESS
BRENNAN BESPOKE
2 The Tithe Barn Glendon Lodge Farm
Glendon
Kettering
Northamptonshire
NN14 1QF

OFFICE DETAILS
01536 904400
info@brennanbespoke.co.uk
<https://www.brennanbespoke.co.uk>

LOCAL AUTHORITY
North Northamptonshire

TENURE
Freehold

COUNCIL TAX BAND
D

VIEWINGS
By prior appointment only

Energy Efficiency Rating		Current	Potential
<i>Very energy efficient - lower running costs</i>			
(92 plus) A			
(81-91) B			
(69-80) C		70	77
(55-68) D			
(39-54) E			
(21-38) F			
(1-20) G			
<i>Not energy efficient - higher running costs</i>			
England & Wales		EU Directive 2002/91/EC	

Agents Note: Whilst every care has been taken to prepare these particulars, they are for guidance purposes only. All measurements are approximate and are for general guidance purposes only and whilst every care has been taken to ensure their accuracy, they should not be relied upon and potential buyers/tenants are advised to recheck the measurements