

Aldreds
Estate Agents



23 Beresford Road
Lowestoft, NR32 2NQ
Offers Over £200,000



23 Beresford Road

Lowestoft, NR32 2NQ

Aldreds are delighted to offer this spacious, three bedroom, double bay-fronted family home, ideally located in the highly desirable North Lowestoft area. The property is within walking distance of local beaches and the railway station, offering direct links to Norwich city centre. This outstanding home provides generous and versatile accommodation, comprising a long entrance hall, an impressive open-plan lounge/diner, a spacious open-plan kitchen/breakfast room, ground floor WC, and a lean-to/utility room. To the first floor is a split-level galleried landing with three well proportioned bedrooms and a modern family shower room leading separately off. Further benefits include gas central heating via an energy efficient combination boiler and uPVC double glazed windows throughout. The property is presented to a high standard, featuring a quality fitted kitchen, a contemporary shower room, and tasteful décor throughout. Early viewing is strongly recommended to fully appreciate the size, condition, and excellent location of this substantial family home.

Entrance Hall

Entrance Area: Fitted entrance flooring leading to:-

Entrance Hall: Laminate flooring, feature galleried staircase leading to first floor, radiator, power points, original coving, uPVC door leading to lean To/Utility Room.

Open Plan Lounge/Diner

27'0" x 10'9" (8.23 x 3.28)

Fitted carpet, original coving, double aspect uPVC windows including a uPVC walk-in bay window, power points, radiators, tv point, ample space for family size dining table and chairs.

Kitchen/Breakfast Room

17'3" x 9'5" (5.28 x 2.89)

Laminate flooring, a full range of quality fitted kitchen units with extended work surfaces, Butler style double ceramic sink with single drainer, roll top breakfast bar, recess for all white goods including dishwasher, tumble dryer and washing machine, recess for full length fridge/freezer, double aspect uPVC windows, coved ceiling, tv point, power points, wall mounted energy efficient combination boiler, electric & gas cooker point, radiator.

Ground Floor WC

Ceramic tiled flooring, modern cloakroom suite comprising of a low level WC, wall mounted sink with tiled splashbacks, two fitted wall cupboards, uPVC window.

Lean To/Utility Room

Polycarbonate roof, uPVC door leading out to rear garden, recess for white goods if required.

Central Split Level Galleried Landing

Creating three separate bedrooms and a separate bathroom. Fitted carpet, radiator, power points, coved ceiling, loft access leading to an insulated and boarded loft space.





Bedroom 1

14'9" x 12'9" (4.51 x 3.91)

Fitted carpet, double aspect uPVC windows including a uPVC walk-in bay window, radiator, power points, tv point, coved ceiling.

Bedroom 2

10'7" x 12'4" (3.24 x 3.78)

Fitted carpet, uPVC window, radiator, power points.

Bedroom 3

8'2" x 8'11" (2.49 x 2.73)

Fitted carpet, coved ceiling, double aspect uPVC windows, power points, radiator.

Family Shower Room

Double length corner shower cubicle enclosed by glass screen doors with Aquaboard walled splashbacks, full length heated towel rail, vanity sink unit, low level WC with enclosed cistern, coved ceiling, extractor fan.

Outside

To the front of the property there is an enclosed front garden with footpath leading to front door. To the rear there is a spacious patio garden providing ample space bistro style dining, timber and felt garden shed, vehicular rear access, all enclosed by fencing and brick walls with a private rear aspect.

Tenure

Freehold

Services

Mains water, electricity, gas, drainage.

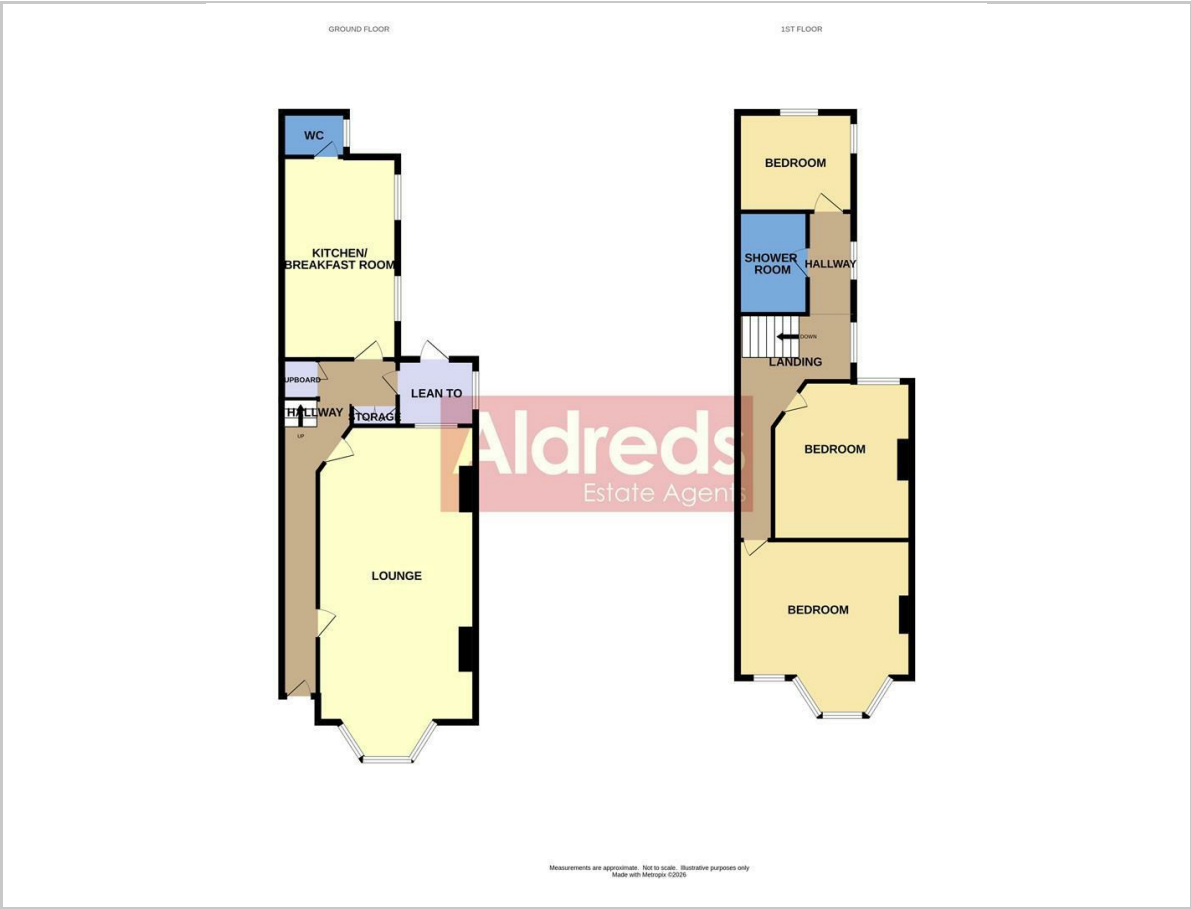
Council Tax

East Suffolk. Band 'B'

Ref: L2527/01/26



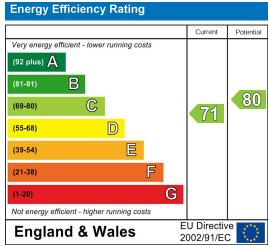
Floor Plan



Area Map



Energy Efficiency Graph



Viewing

Please contact our Aldreds Lowestoft Office on 01502 565432 if you wish to arrange a viewing appointment for this property or require further information.

Disclaimer
These particulars are issued on an understanding that all negotiations shall be conducted through Messrs. Aldreds. Please note: Messrs. Aldreds for themselves and for the vendors or lessors of this property whose agents they are given notice that: 1. Particulars are set out as a general outline only for guidance of intending purchasers or lessees, and do not constitute nor constitute part of, an offer or contract. 2. All descriptions, dimensions, references to condition and necessary permissions for use and occupation, and other details are given without responsibility and any intending purchasers or tenants should not rely on them as statements or representations of fact but must satisfy themselves by inspection or otherwise as to the correctness of each of them. 3. No person in the employment of Messrs. Aldreds has any authority to make or give any representation or warranty whatever in relation to this property. 4. If you are proposing to visit the property and are travelling some distance please check with Aldreds on the issue of availability prior to travelling. 5. Aldreds Property Consultants and associated services may offer additional services to the prospective purchaser for which they will be entitled to receive a commission.
Aldreds are pleased to be working with Mortgage Advice Bureau. They're an award-winning mortgage broker with over 1,400 advisers across the UK, and have access to over 12,000 mortgage products from over 90 lenders. Aldreds Estate Agents Ltd receive a commission of £200 on each completed case. Your home may be repossessed if you do not keep up repayments on your mortgage. There may be a fee for mortgage advice. The actual amount you pay will depend upon your circumstances. The fee is up to 1%, but a typical fee is 0.3% of the amount borrowed. Mortgage Advice Bureau is a trading name of Mortgage Seeker Limited which is an appointed representative of Mortgage Advice Bureau Limited and Mortgage Advice Bureau (Derby) Limited which are authorised and regulated by the Financial Conduct Authority. Mortgage Seeker Limited Registered Office: Lovewell Blake, Sixty Six North Quay, Great Yarmouth, Norfolk, NR30 1HE. Registered in England Number: 03721415. 6. Potential purchasers should check with their providers that the broadband and mobile phone coverage they would require is available.

143 London Road North, Lowestoft, Suffolk, NR32 1NE
Tel: 01502 565432 Email: lowestoft@aldreds.co.uk <https://www.aldreds.co.uk/>
Registered in England Reg. No. 08945751 Registered Office: 17 Hall Quay, Great Yarmouth, Norfolk NR30 1HJ
Directors: Mark Duffield B.S.c. FRICS. Dan Crawley MNAEA Paul Lambert MNAEA