



Bramber Road, W14

£2,750 Per calendar month

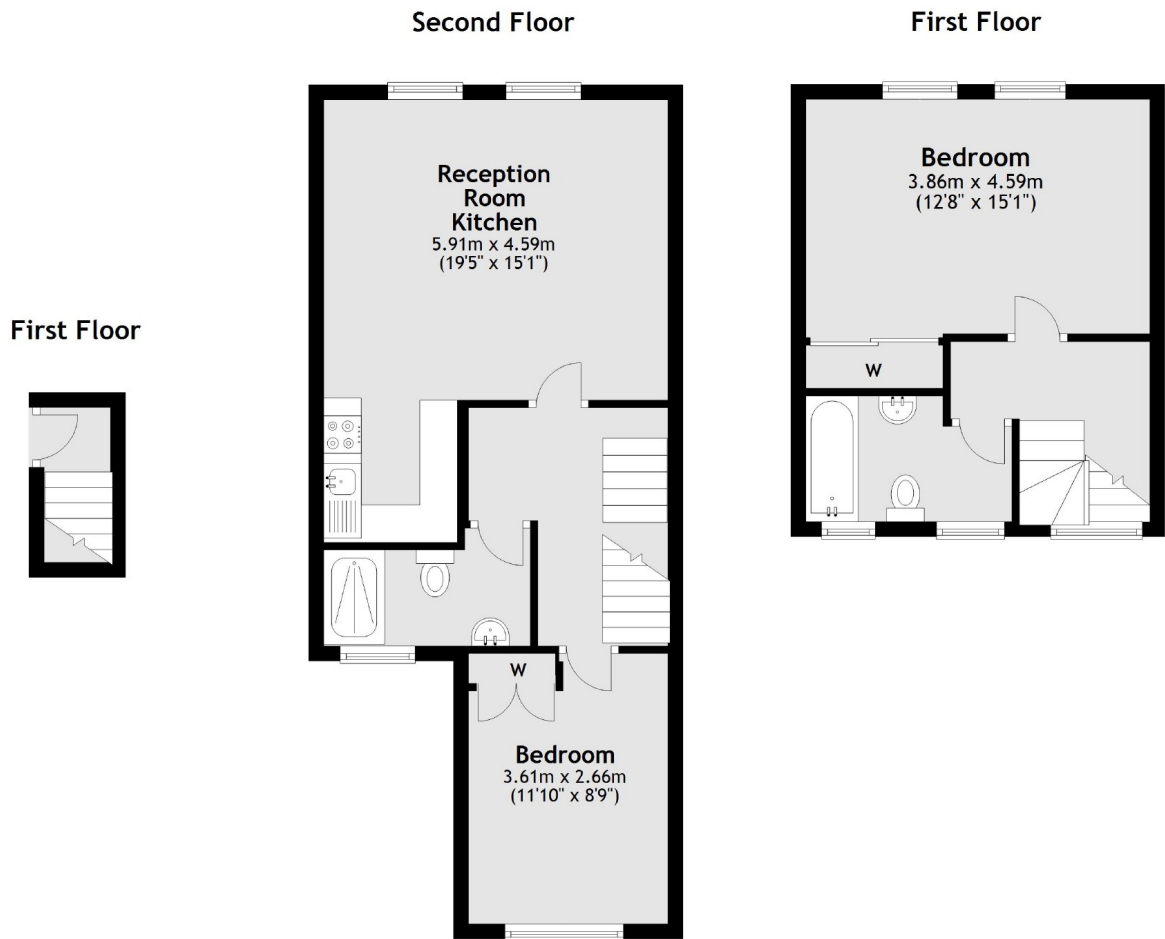
A very impressive split level two double bedroom new build apartment. It has been finished to an great standard for those that value a stylish home and has a large open plan kitchen living room and a two bathrooms.

Bramber Road is located just off from North End Road on the edge of Fulham. Within a 10 minute walk to the numerous shops and bars. Within half a mile to West Brompton, West Kensington and Barons Court stations.

Features

- Two Bedrooms
- Two Bathrooms
- Top Floor
- Close To Tube
- Modern Finish
- Split Level

Bramber Road, London, W14



Total area: approx. 70.6 sq. metres (760.0 sq. feet)