

Waterman House, 1 Lord Street. Gravesend
Kent, DA12 1AW
Sales: 01474 330840
Email: info@watermanhouseestates.co.uk
www.watermanhouseestates.co.uk



Waterside Close, Faversham, ME13 7AU

Asking price £585,000

We are excited to bring to the market this stunning end-of-terrace townhouse in a private, gated community along the picturesque Faversham Creek. This exceptional property combines modern living with the charm of waterside views and versatile spaces, perfect for families or those looking for flexible accommodation.

The ground floor features a self-contained annexe with its own entrance and access to the garden. This thoughtfully designed space offers a generous open-plan living and sleeping area as well as a kitchen and shower room. The current owner operates this space as a B&B with potential earnings of £150 per night, making it an attractive option for additional revenue, guest accommodation, or multigenerational living. The heart of the home is the open-plan living room and dining area located on the first floor, offering ample space for entertaining or family gatherings. Double doors open onto a balcony with serene creek views, perfect for enjoying morning coffee or evening sunsets. This floor also includes a well-appointed kitchen and a convenient WC. The top floor boasts three double bedrooms, one with an en-suite, plus a family bathroom. These well-proportioned bedrooms provide comfortable private spaces, ideal for relaxation.

The property benefits from a driveway with parking for two cars, a workshop for storage or hobbies, and a garden laid to lawn with a patio area, mature shrubs, and a shed—ideal for outdoor activities and gardening enthusiasts. Nestled in the charming historic town of Faversham, just a short stroll away, Faversham town centre offers an array of independent shops, cafes, and traditional pubs, as well as a popular market, where fresh local produce and artisanal goods can be found. The property also benefits from excellent transport links.

Additional details -

£45 service charge per month for maintaining grounds

Council Tax Band - E

Large loft boarded and insulated with light and folding ladder

Boiler fitted in 2018 - serviced yearly



GROUND FLOOR

Reception Room

Kitchen

Shower Room

Workshop

FIRST FLOOR

Kitchen

Lounge

Balcony

SECOND FLOOR

Bedroom 1

Ensuite

Bedroom 2

Bedroom 3

Bathroom

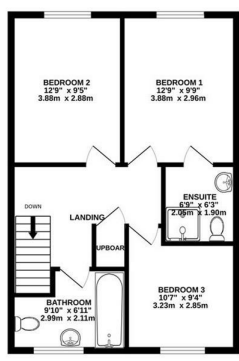
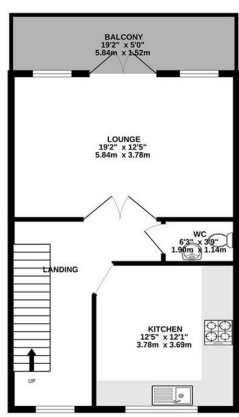
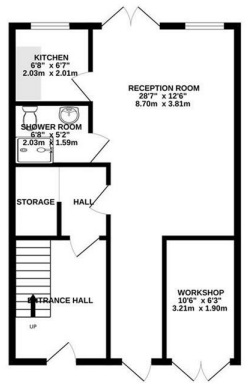
EXTERNAL



GROUND FLOOR
547 sq.ft. (50.8 sq.m.) approx.

1ST FLOOR
547 sq.ft. (50.8 sq.m.) approx.

2ND FLOOR
547 sq.ft. (50.8 sq.m.) approx.



TOTAL FLOOR AREA : 1641 sq.ft. (152.4 sq.m.) approx.
 Whilst every attempt has been made to ensure the accuracy of the floorplan contained here, measurements of doors, windows, rooms and any other items are approximate and no responsibility is taken for any error, omission or mis-statement. This plan is for illustrative purposes only and should be used as such by any prospective purchaser. The services, systems and appliances shown have not been tested and no guarantee as to their operability or efficiency can be given.
 Made with Metropix ©2024

Energy Efficiency Rating		Current	Potential
Very energy efficient - lower running costs			
(92 plus) A			82
(81-91) B			
(69-80) C			
(55-68) D			
(39-54) E		68	
(21-38) F			
(1-20) G			
Not energy efficient - higher running costs			

Environmental Impact (CO ₂) Rating		Current	Potential
Very environmentally friendly - lower CO ₂ emissions			
(92 plus) A			
(81-91) B			
(69-80) C			
(55-68) D			
(39-54) E			
(21-38) F			
(1-20) G			
Not environmentally friendly - higher CO ₂ emissions			