



Canterbury Street, Gillingham ME7 5TU

£1 Per Calendar Month

COMPANY LET PROPERTY!!! NOT TO BE MISSED!!! CALL BEFORE IT'S GONE!!! CURRENTLY BEING RENOVATED!!!

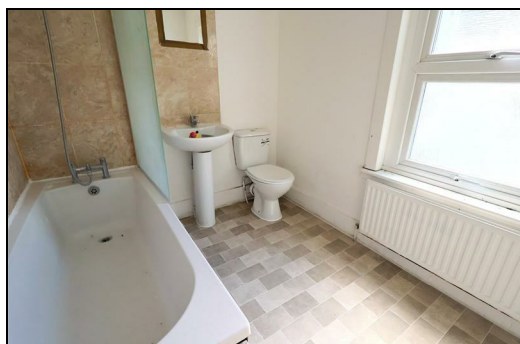
CALL TO DISCUSS THE RENT AMOUNT. SECURITY DEPOSIT 5 WEEKS OF RENT. COMPANY SET UP FEE £360.00.

Six bedroom unfurnished property. Offering kitchen/diner, ground floor bathroom, upstairs shower room and rear garden. Versatile use. Call to discuss further and book a viewing.

CR Real Estate are part The Ombudsman Redress Scheme and are a member of the Propertymark Client Money Protection Scheme. Tenant deposits are protected by the Tenancy Deposit Scheme. For more information, please contact us.

Client Money Protection is provided by: Client Money Protect. Scheme Ref: CMP004209

Independent redress is provided by: The Property Ombudsman (TPO). Membership Number: E01687



Energy Efficiency Rating		
	Current	Potential
Very energy efficient - lower running costs		
(92 plus) A		
(81-91) B		
(69-80) C		
(55-68) D		
(39-54) E		
(21-38) F		
(1-20) G		
Not energy efficient - higher running costs		
England & Wales	EU Directive 2002/91/EC	

Environmental Impact (CO ₂) Rating		
	Current	Potential
Very environmentally friendly - lower CO ₂ emissions		
(92 plus) A		
(81-91) B		
(69-80) C		
(55-68) D		
(39-54) E		
(21-38) F		
(1-20) G		
Not environmentally friendly - higher CO ₂ emissions		
England & Wales	EU Directive 2002/91/EC	



ESTATE AGENCY : REDEFINED

