



Steward Street, E1

£475,000

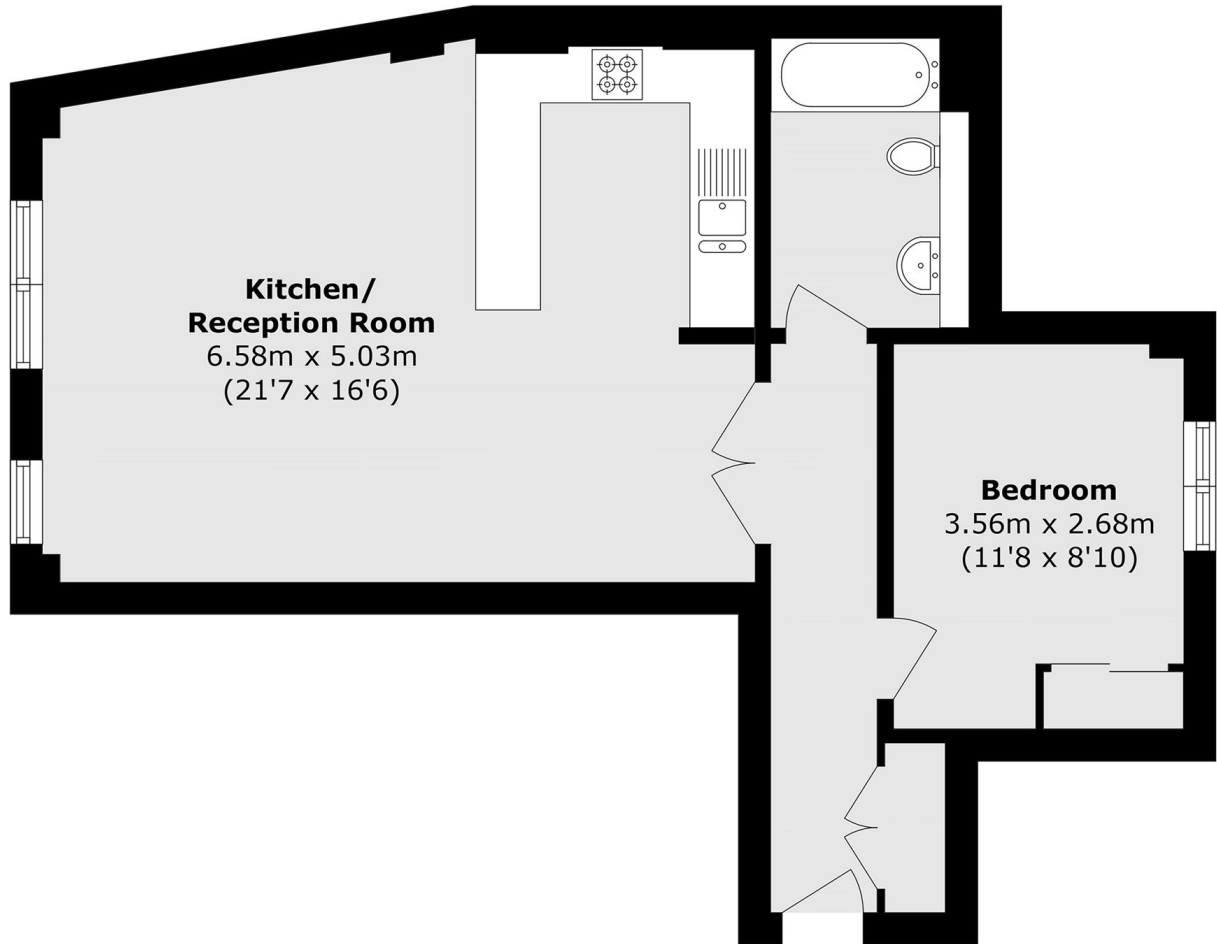
A large one-bedroom apartment located on the top floor in a desirable block located on the edge of Spitalfields Market. The apartment comprises an open-plan kitchen/living room, a contemporary bathroom and a double bedroom.

Steward Street is situated on the doorstep of Spitalfields Market and offers a unique haven from the City, surrounded by cobbled streets, cafés and restaurants, just moments from Liverpool Street Station.

Features

- Top Floor Apartment
- Doorstep of Spitalfields Market
- Open Plan Kitchen
- Offered Chain Free
- Secure Entry
- Lift Access

Steward Street,
London, E1



Total area (approx.): 54.0 sq. m (581.3 sq. ft)