



**Rowe
& Co.**

8 Loughwood Close, Eastleigh

Eastleigh

In Excess of **£350,000**

**Rowe
& Co.**



8 Loughwood Close

Eastleigh

This beautifully presented three-bedroom semi-detached home has been thoughtfully extended on the ground floor and enjoys a secluded position within a highly sought-after cul-de-sac. The well-planned accommodation comprises a welcoming entrance hall, a spacious lounge, a separate dining room, a well-appointed kitchen, and a convenient cloakroom. Upstairs, there are three well-proportioned bedrooms served by a modern family bathroom. Outside, the property benefits from a driveway providing off-road parking, a garage, and a private, secluded rear garden. A bespoke garden room offers a versatile space, ideal as a home office, gym, studio, or entertaining area, making this an exceptional home for modern family living.

LOCATION

Situated in a popular location, this property enjoys the advantages of easy access to the family-friendly Eastleigh town centre, as well as the vibrant cities of Southampton and Winchester with their wide range of leisure facilities and shopping opportunities. The nearby Eastleigh mainline railway station provides convenient and frequent services to London Waterloo. In addition, Southampton International Airport is just a short drive away, and the property enjoys easy access to major road links including the M3 and M27.

Council Tax band: C

Tenure: Freehold

EPC Energy Efficiency Rating: C



8 Loughwood Close

Eastleigh

INSIDE

The property is entered via a spacious entrance hall, which provides access to all principal ground floor rooms, including a convenient cloakroom. There is also an external door leading to the rear garden and stairs rising to the first floor. The generous lounge is situated to the front of the property and benefits from a large bay window, creating a bright and welcoming living space. A separate dining room overlooks the rear garden and features an opening through to the fitted kitchen, which is equipped with a range of matching wall and base units, cupboards and drawers, complemented by ample work surfaces. Upstairs, the first floor offers three well-proportioned bedrooms, with fitted wardrobes in both the principal bedroom and bedroom two. Completing the accommodation is a modern family bathroom, finished to a high standard.

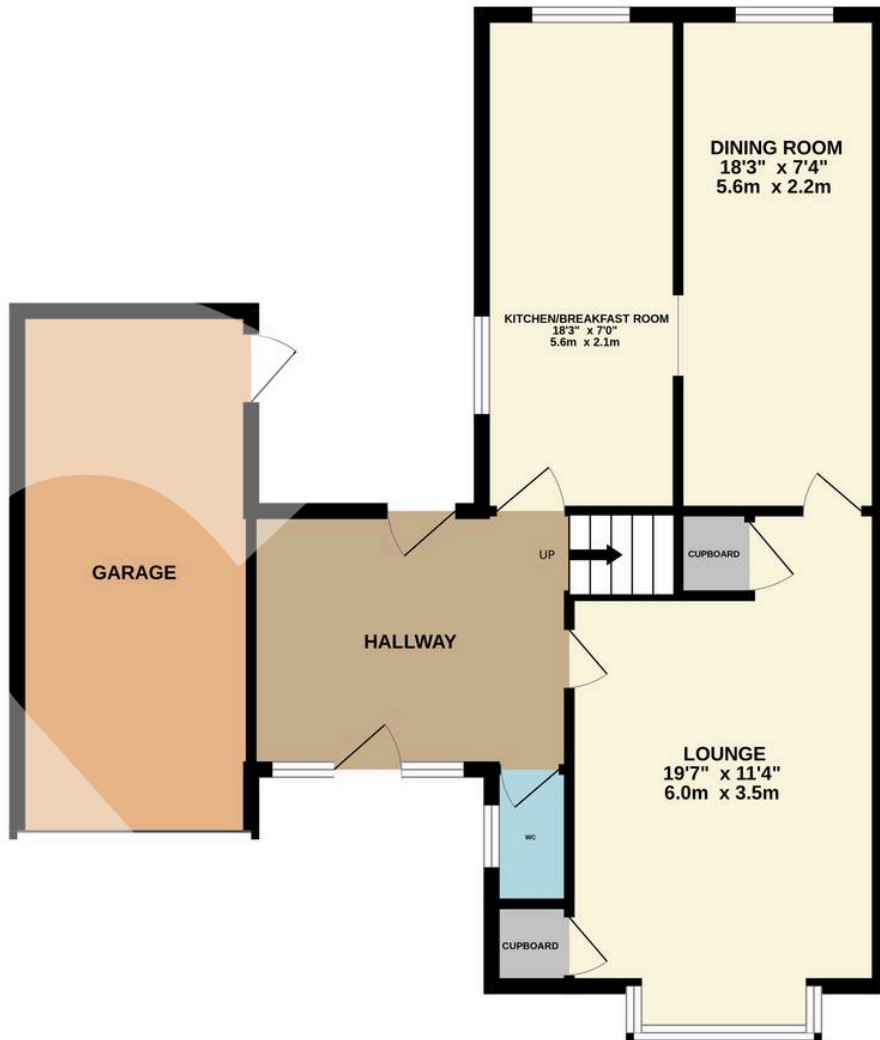
OUTSIDE

To the front of the property, a generous driveway provides off-road parking for multiple vehicles and leads to the garage, which is equipped with an EV charging point. An area of lawn enhances the property's attractive frontage. The rear garden features a paved seating area, ideal for outdoor dining and entertaining, with the remainder predominantly laid to lawn. A bespoke garden room/home office, complete with power, lighting and air conditioning, provides a versatile space that is perfect for home working, a studio, gym or hobby room.

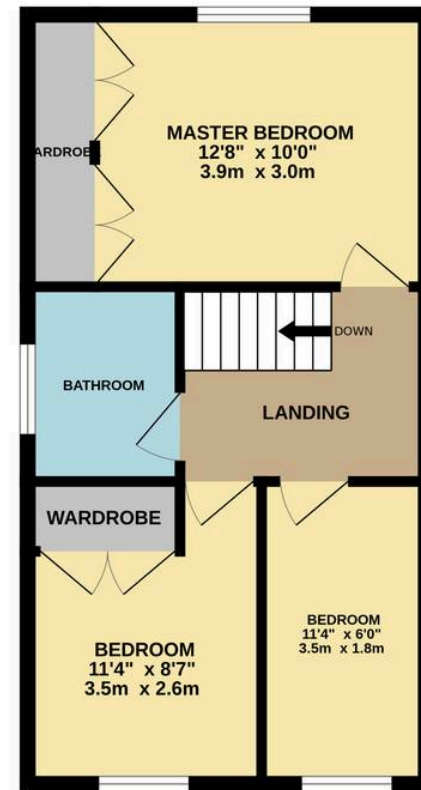
- Three Bedrooms
- Popular Location
- Garage & Driveway
- Garden Office
- Extended To The Ground Floor



GROUND FLOOR



1ST FLOOR



Whilst every attempt has been made to ensure the accuracy of the floorplan contained here, measurements of doors, windows, rooms and any other items are approximate and no responsibility is taken for any error, omission or mis-statement. This plan is for illustrative purposes only and should be used as such by any prospective purchaser. The services, systems and appliances shown have not been tested and no guarantee as to their operability or efficiency can be given.
Made with Metropix ©2026