

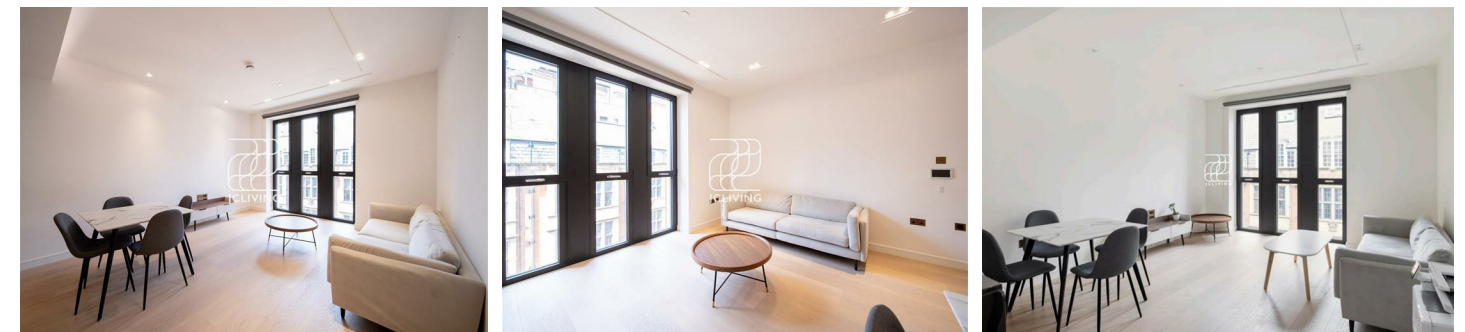
### Directions

### Viewings

Viewings by arrangement only. Call 02033696888 to make an appointment.

### EPC Rating

Energy Efficiency Rating		Current	Potential
Very energy efficient - lower running costs			
(92 plus) <b>A</b>			
(81-91) <b>B</b>			
(69-80) <b>C</b>			
(55-68) <b>D</b>			
(39-54) <b>E</b>			
(21-38) <b>F</b>			
(1-20) <b>G</b>			
Not energy efficient - higher running costs			
<b>England &amp; Wales</b>		EU Directive 2002/91/EC	



Apartment N404, Lincoln Square 18 Portugal street, London, WC2A 2AT

£1,500 Per Week

# Lincoln Square 18 Portugal street, London WC2A 2AT

\*\*\* Please quote reference JC2309859 when contacting the office \*\*\*

Nestled in the vibrant heart of Lincoln Square, London, this exquisite flat offers a perfect blend of modern living and urban convenience. With two well-appointed bedrooms, this property is ideal for professionals, couples, or small families seeking a stylish and comfortable home.

Upon entering, you are greeted by a spacious reception room that serves as the perfect space for relaxation or entertaining guests. The room is bathed in natural light, creating a warm and inviting atmosphere. The flat features two contemporary bathrooms, ensuring that both residents and visitors enjoy privacy and comfort.

The location of this property is truly exceptional. Lincoln Square is renowned for its rich history and cultural significance, providing residents with easy access to a plethora of shops, restaurants, and entertainment options. The nearby transport links make commuting a breeze, connecting you to the rest of London and beyond.

This flat not only offers a prime location but also a modern lifestyle, making it a fantastic opportunity for those looking to immerse themselves in the dynamic energy of the city.



Council Tax Band: G

