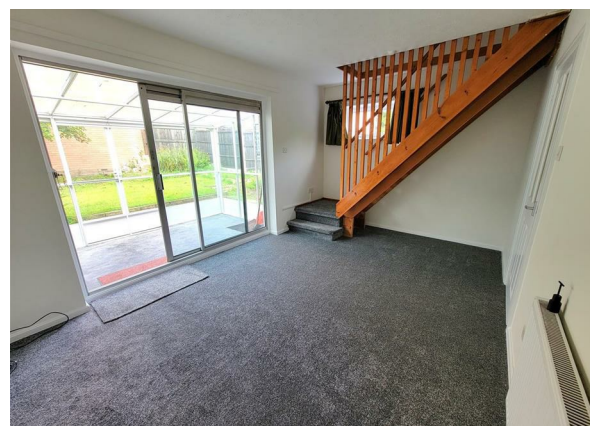


The Orchard, Bicton Heath, Shrewsbury, SY3 5AW

£145,000

Council Tax Band: A



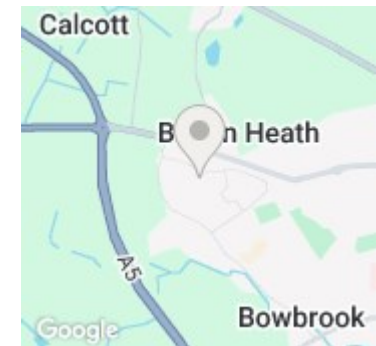
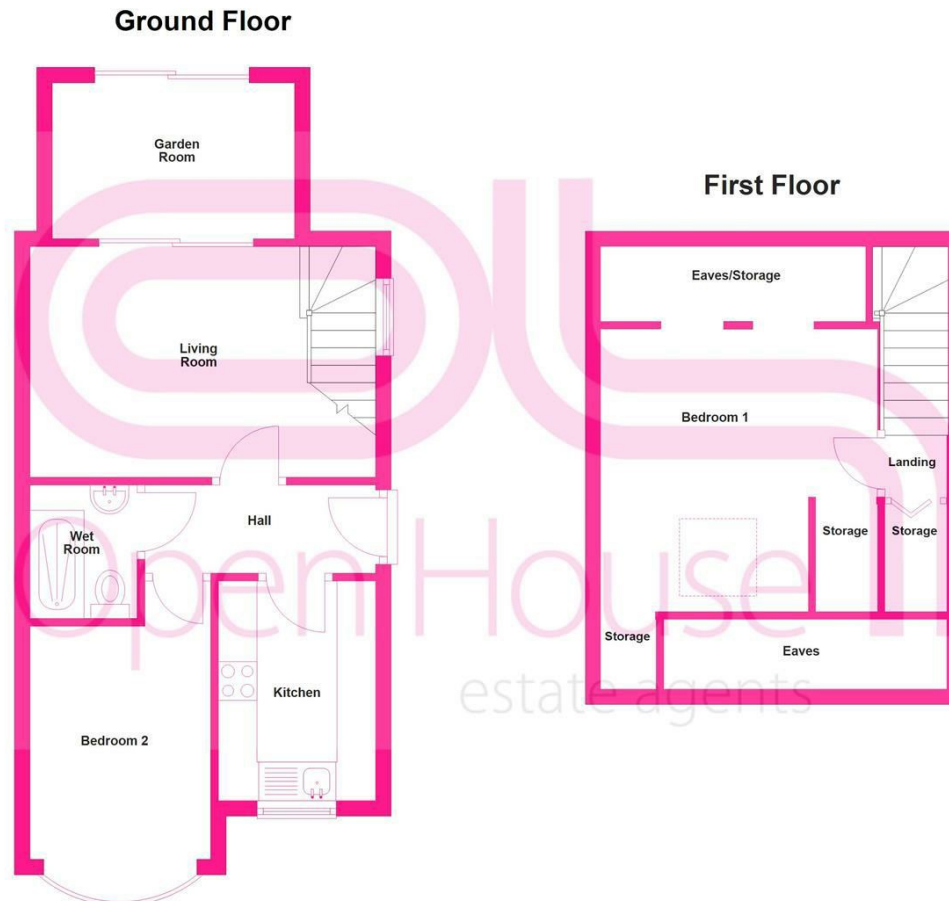
This charming end-terrace house offers a delightful opportunity for those seeking a comfortable home in a peaceful environment. The property has flexible living space that can be tailored to your needs with the downstairs reception room having the potential to be a second bedroom or home office.

The house benefits from a fully enclosed garden, perfect for enjoying the outdoors in privacy, as well as allocated parking for one vehicle, ensuring convenience for residents. While the property is in need of some modernisation, it has recently been redecorated, allowing you to move in with ease while you plan your updates.

Situated in a quiet 'courtyard' location, this home is ideal for those who appreciate a serene atmosphere, yet it remains within easy reach of local amenities and transport links. Whether you are a first-time buyer or looking to downsize, this property presents a wonderful opportunity to create a lovely living space in a sought-after area. Don't miss the chance to make this house your home.



Open House Whitchurch



Energy Efficiency Rating		
	Current	Potential
Very energy efficient - lower running costs		
(92 plus) A		
(81-91) B		89
(69-80) C		
(55-68) D	67	
(39-54) E		
(21-38) F		
(1-20) G		
Not energy efficient - higher running costs		
England & Wales	EU Directive 2002/91/EC	