



Brampton Close, Barton Seagrave

Barton Seagrave

£1,450 pcm

Deposit: £1,450

Life does not come any easier than with this three bedroom detached house situated in Barton Seagrave. This excellent modern family home boasts a spacious lounge diner with dual aspect windows and French doors leading to a low maintenance rear garden mainly with patio with the addition lawn. A well-stocked kitchen with a 6 oven hob and extractor. To the first floor 1 double bedroom, 1 single bedroom, 1 master bedroom and family bathroom with over bath shower. There is a driveway providing off road parking for two cars. To Sit back and take it easy call 01536 416555 for a viewing. EPC RATING: D

Available July!

Living Room
14'9 x 11'1

Dining Room
9'1 x 9'

Kitchen/Breakfast/Family Room
18' x 16'7

Study
8'9 x 7'8

Bedroom One
12'5 x 9'6

Bedroom Two
11'7 x 8'6

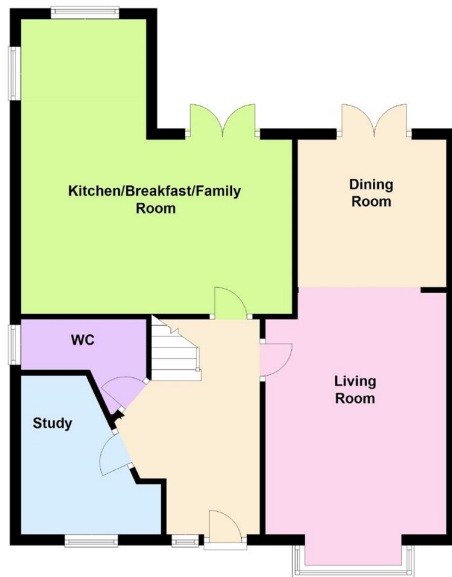
Bedroom Three
9'6 x 8'4

Bathroom
8'3 x 5'6

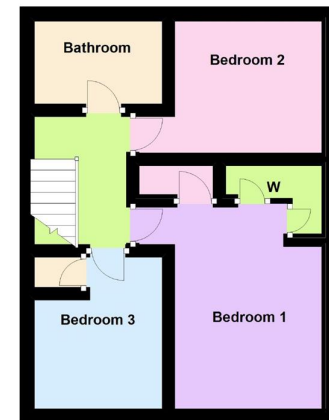




Ground Floor



First Floor





Henderson Connellan Kettering office 01536 417888 ketteringsales@hendersonconnellan.co.uk

Disclaimer: These particulars do not form part of any offer or contract and should not be relied upon as statements or representations of fact. Any areas, measurements of distances are approximate. The text, photographs and plans are for guidance only and are not necessarily comprehensive.

