



OAKFIELD



Gillsmans Hill, St. Leonards-On-Sea
£1,600 Per Calendar Month



3



1



1



C

SUMMARY

Deceptively Spacious Three Bedroom Home in Sought-After St Leonard's.

This impressive three bedroom property boasts a stunning interior, meticulously finished to an exceptionally high standard. New carpets and sleek finishes throughout create a bright and welcoming atmosphere, perfect for modern living.

The inviting entrance hall features handy storage, while the fully fitted kitchen is equipped with integrated appliances, an electric oven, and gas hob. The efficient boiler, just one year old, ensures a warm and cosy home.

The beautiful lounge diner is filled with natural light, and double doors lead seamlessly into the garden, creating an ideal space for entertaining and a natural flow between the living and garden space.

Two spacious bedrooms on the first floor enjoy an abundance of natural light and this floor also has the stylish shower room which boasts a rainfall shower, modern glass screen, and feature lighting, all set against sleek marble tiling.

The stunning master bedroom is situated on the second floor, complete with a bespoke shower, cleverly designed dressing area, and Dorma window with a lovely leafy outlook.

Outside, the property benefits from a low-maintenance garden, beautifully laid to patio and high-quality Astro turf, along with a convenient parking space. Side access to the garden provides



a safe and secure space for garden storage. In addition to a dedicated off road parking space.

Located in a highly sought-after area of St Leonard's, a vibrant coastal community, St Leonard's is known for its elegant Victorian architecture, thriving arts scene, and independent cafés, restaurants, and galleries.

The area offers easy access to the seafront promenade, beautiful green spaces like Alexandra Park, and excellent transport links to Hastings, London, and beyond.

Whether you're drawn to the lively local culture, scenic walks, or the convenience of nearby amenities, this location provides a lifestyle that's both relaxed and well-connected.



Living Room

17'5" x 15'4"

Kitchen

10'7" x 8'4"

Bedroom 1

15'5" x 10'8"

Shower Room

7'6" x 6'2"

Bedroom 2

15'5" x 10'9"

Bedroom 3

19'8" x 11'9"

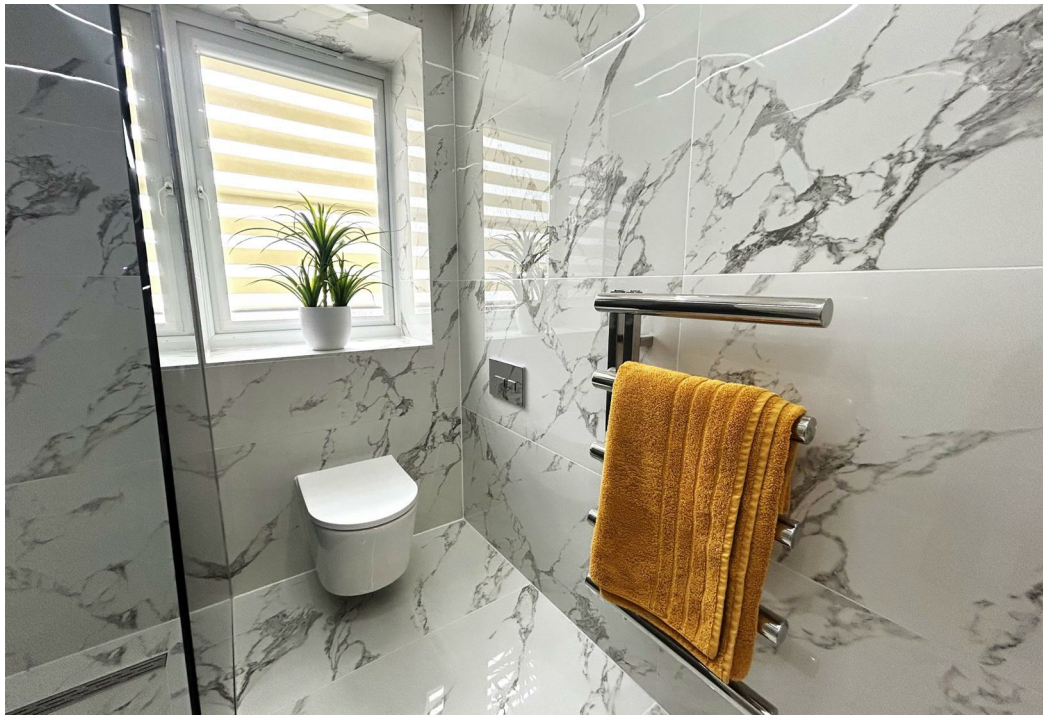
Council Tax Band - D £2,554.14 per annum

Additional Information















INFORMATION

Local Authority

Hastings Borough Council

Council Tax Band

D

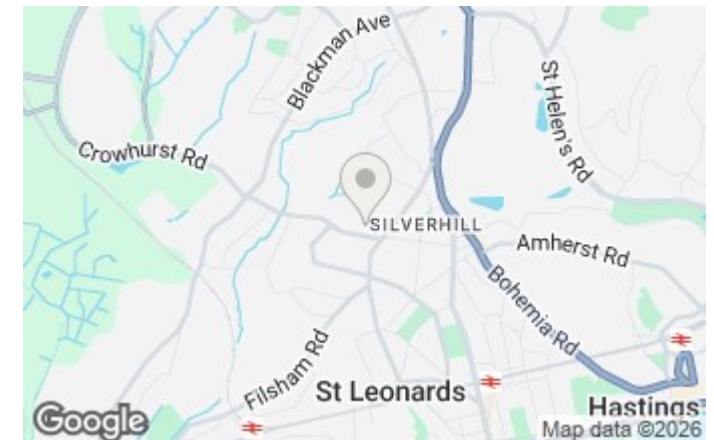
Opening Hours

Monday to Friday	9.00am - 5.30pm
Saturday	9.00am - 4.00pm

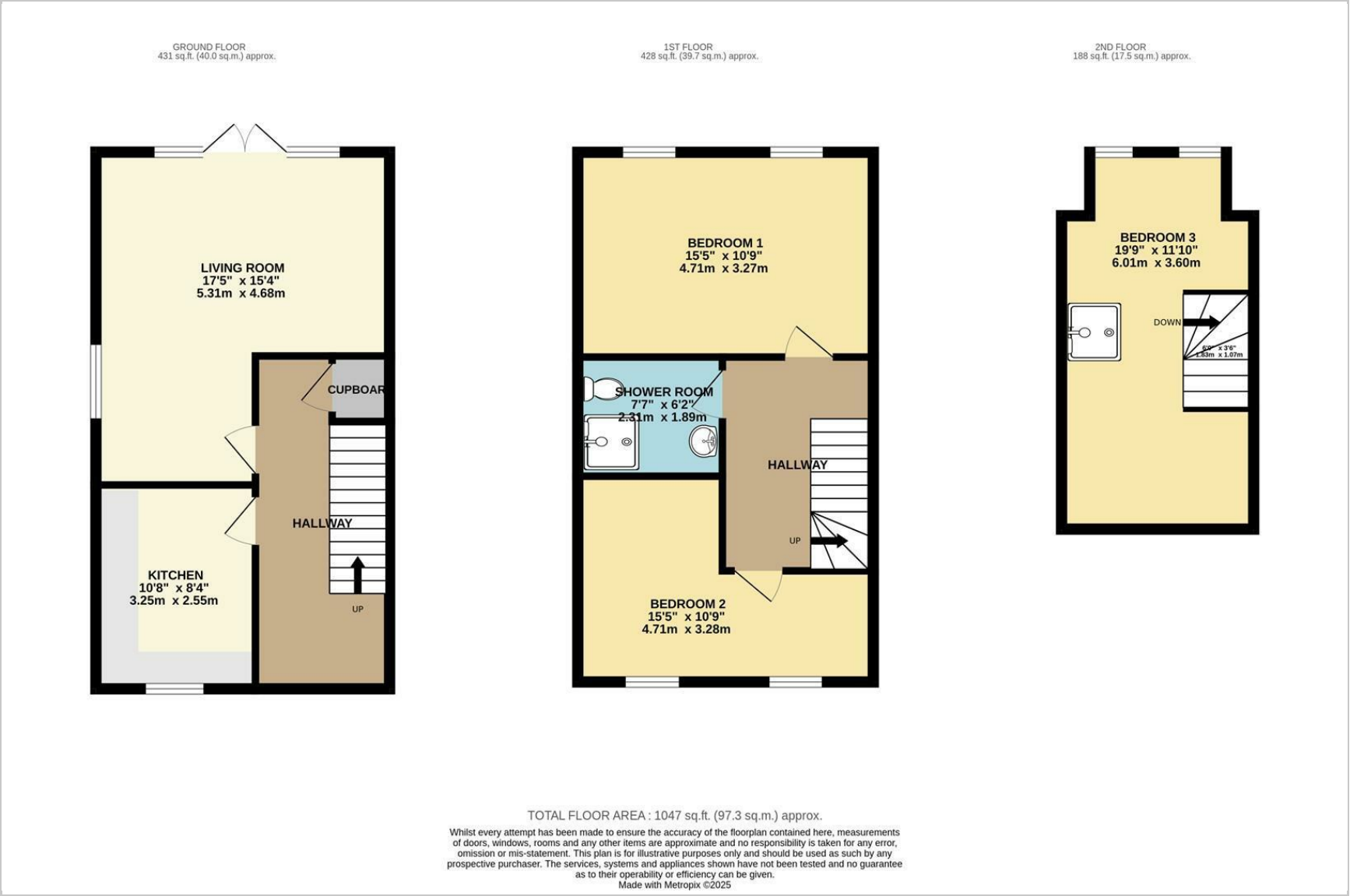
Viewings

Please contact us on 01424 224700 if you wish to arrange a viewing appointment for this property or require further information.

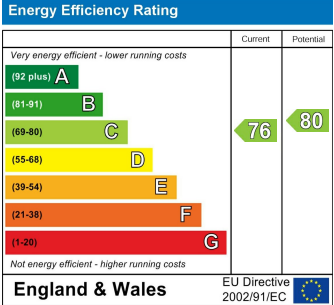
Area Map



Floorplan



Energy Efficiency Graph



These particulars, whilst believed to be accurate are set out as a general outline only for guidance and do not constitute any part of an offer or contract. Intending purchasers should not rely on them as statements of representation of fact, but must satisfy themselves by inspection or otherwise as to their accuracy. No person in this firms employment has the authority to make or give any representation or warranty in respect of the property.