



TO LET

Churchfields, Southend-On-Sea SS3 8TW

£2,095 PCM Deposit Required - £2,019 Council Tax Band - E

- Three Bedroom Detached House
- Double Garage & Off Street Parking
- Large Garden With Patio Area
- Large Master Bedroom
- Modern En-Suite Shower Room
- Modern Family Bathroom
- Recently Laid Flooring Throughout
- Double Glazed Throughout
- Available From The End Of June
- Viewing Is Highly Recommended

Appointmoor Rental
72 The Ridgeway, Chalkwell, Westcliff, Essex, SS0 8NU
T. 01702 719 966 W. appointmoor.co.uk

appointmoor

Description

This beautiful 3 bedroom detached house is located in a quiet cul de sac in Shoeburyness, offering a peaceful and private setting. Recently refurbished throughout, the house has a fresh and modern feel throughout.

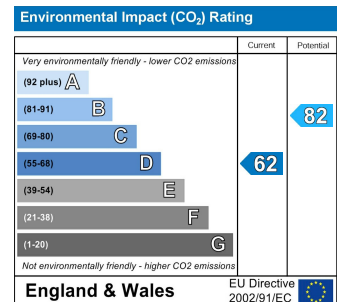
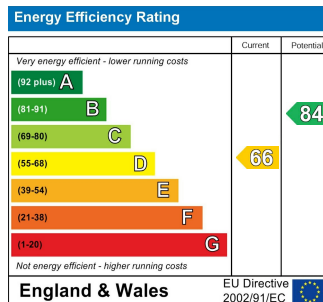
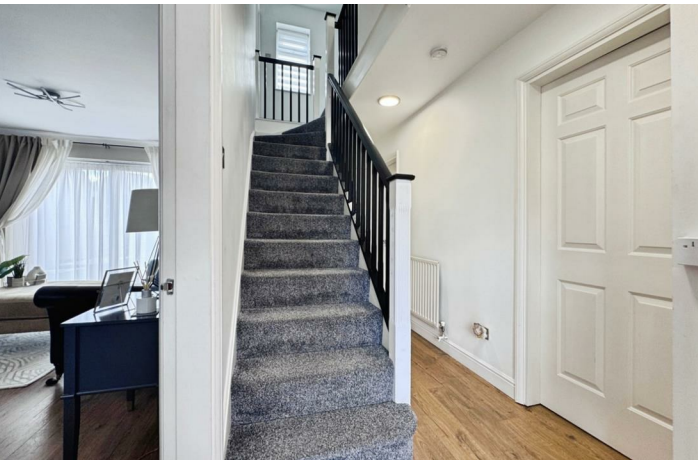
The kitchen features an array of modern amenities, including an integrated fridge freezer, dishwasher, and washing machine. The living room is a spacious area with doors leading into the garden. There is a downstairs w/c and separate dining room.

The house offers three well-proportioned bedrooms, two of these have fitted mirrored wardrobes, providing ample space for a family or guests. The master bedroom is particularly impressive, featuring an en-suite shower room for added privacy and convenience. The en-suite and main bathroom is fitted with modern marble effect tiles and fixtures with a

stylish shower with Grohe shower fittings, Tavistock sanitary ware and hanging toilets.

One of the standout features of this property is its large garden. The garden offers plenty of space for outdoor activities and has a perfect patio area. The tranquil setting provides a peaceful escape from the hustle and bustle of daily life.

The double garage provides ample parking space and additional storage options.



AGENTS NOTES: Every care has been taken with the preparation of these particulars, but complete accuracy cannot be guaranteed. If there is any point, which is of particular importance to you, please obtain professional confirmation. Alternatively, we will be pleased to check the information for you. All measurements quoted are approximate. Floor plans are not to scale. The Fixtures, Fittings & Appliances have not been tested and therefore no guarantee can be given that they are in working order. Photographs are reproduced for general information, and it cannot be inferred that any item shown is included in the sale.

VIEWINGS: BY APPOINTMENT ONLY