

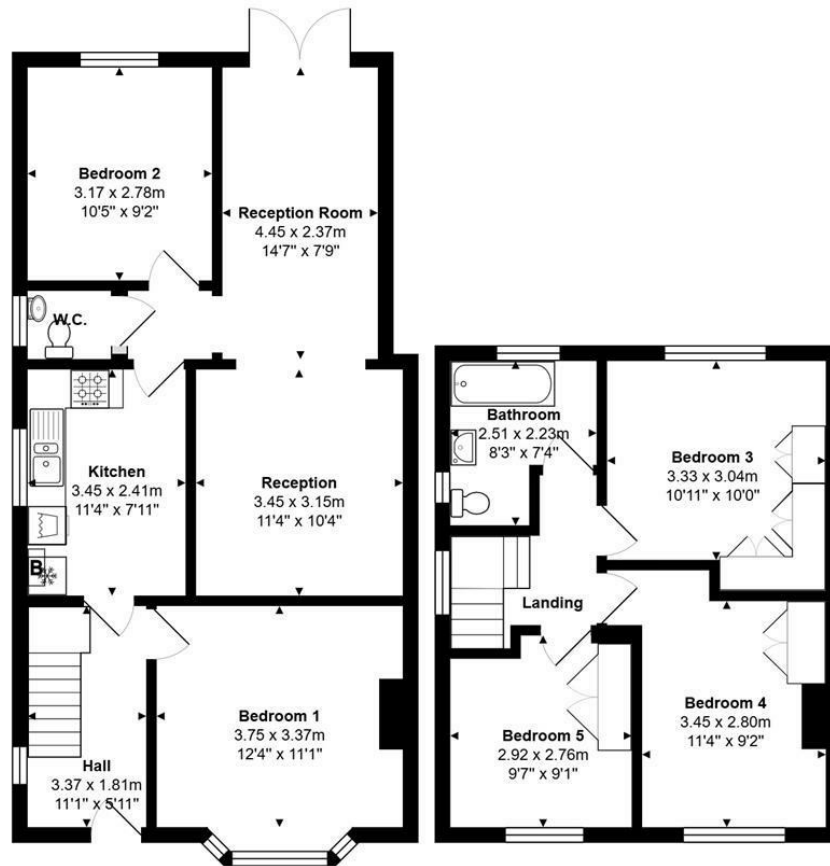


29 Kingsley Avenue, Englefield Green, TW20 0PP

A well-presented semi-detached five-bedroom investment property, currently let at £2,500 per calendar month until 14 July 2026. The property has been carefully maintained by the current owners and benefits from a ground-floor extension, creating a fifth bedroom along with an extended living area. Conveniently located close to local village amenities, the property is also approximately a 15-minute walk from Royal Holloway College.



Floor Plan



Total Area: 105.6 m² ... 1136 ft²



Features

- Investment Buyers!
- 5-Bedrooms
- Village Location
- Council Tax Band: C / EPC Rating: D
- Semi-Detached
- Double Reception Room
- 15 Minutes Walk to Royal Holloway College

10 St Judes Road, Englefield Green, Surrey TW20 0BY
Tel 01784 433696
sales@aspenestateagents.co.uk



Tenure - Freehold Council Tax Band - C

