



Constables
SALES & LETTINGS

Wharfedale Drive Eastham, Wirral

£695 Per Month

Available to let, this two bedroom first floor apartment situated on a popular development in Easham, close to shops and amenities. The development benefits from having lovely private communal gardens and off road parking.

The apartment is unfurnished. The front door opens to a hallway with stairs leading up to the first floor accommodation, which comprises, fitted kitchen with oven & hob, lounge-diner, master bedroom with built-in wardrobes, a further bedroom with built-in cupboard and a modern fitted bathroom with shower.

IMPORTANT
CALL NOW FOR YOUR FREE
10 YEAR PARTS GUARANTEE
CALL FREE NOW
800 479 0765
REG. 01 952 3863

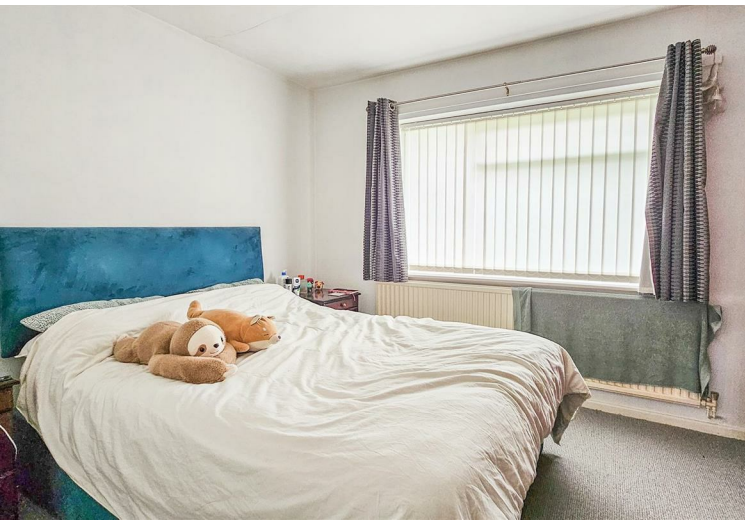




Constables


SALES & LETTINGS

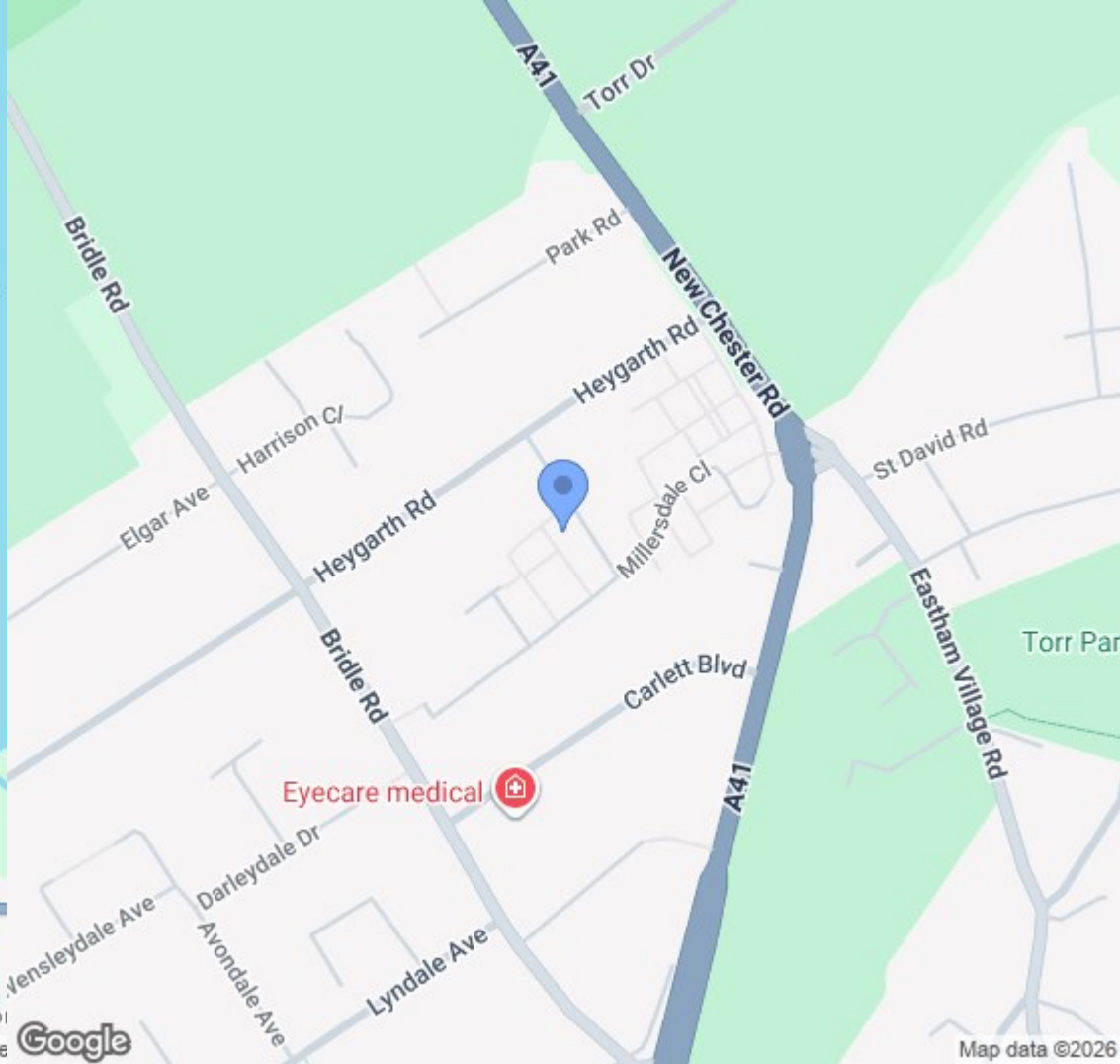
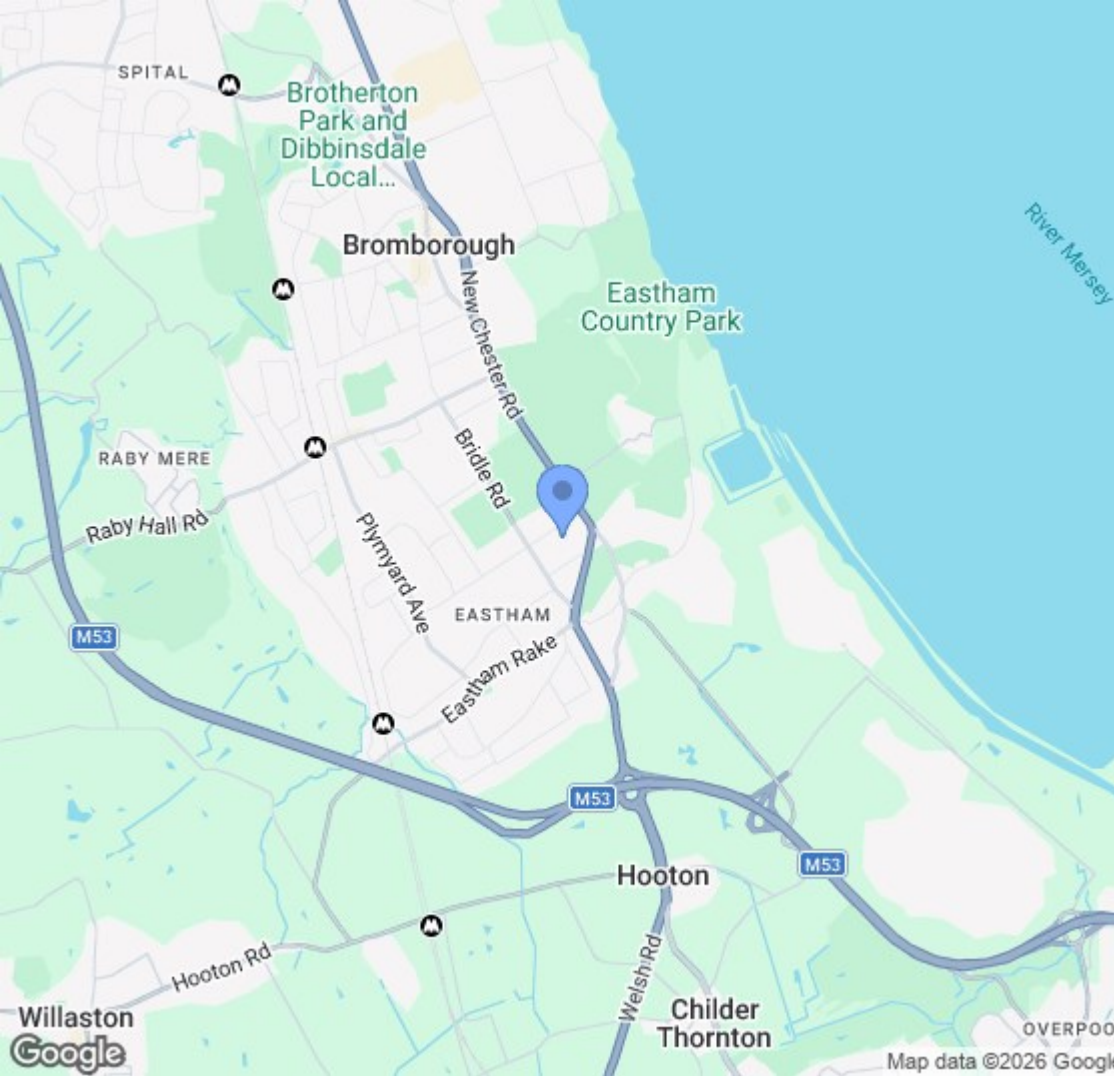
- First Floor Apartment
- Modern Kitchen & Bathroom
- Unfurnished
- Two Bedrooms
- Off Road Parking
- Lounge-Dining Room
- Close to Amenities





EPC & Floor Plan

Energy Efficiency Rating		
	Current	Potential
<i>Very energy efficient - lower running costs</i>		
(92 plus) A		
(81-91) B		
(69-80) C		
(55-68) D		
(39-54) E		
(21-38) F		
(1-20) G		
<i>Not energy efficient - higher running costs</i>		
England & Wales	EU Directive 2002/91/EC	



Location Map

Constables

S A L E S & L E T T I N G S

21 High Street, Neston

South Wirral, Neston, Cheshire

www.constablesestateagents.co.uk

info@constablesestateagents.co.uk

0151 353 1333