



BOLTON ROAD , LEICESTER, LEICESTERSHIRE LE3 6AB

OFFERS OVER £165,000



PROPERTY REFERENCE CODE: RS0089

BOLTON ROAD , LEICESTER, LEICESTERSHIRE LE3 6AB

Ideally positioned close to local amenities, transport links, and key facilities, this home combines comfort, practicality, and investment potential.

Early viewing is highly recommended — call us now to book your viewing!

- IDEAL FOR FIRST TIME BUYER AND INVESTORS
- LARGE BATHROOM
- PRIME LOCATION
- TWO DOUBLE BEDROOM
- WITH BATHTUB AND SEPARATE SHOWER
- TWO RECEPTION ROOM
- CALL US NOW TO BOOK A VIEWING!

This property consists of:

Positioned within a highly sought-after prime location, this beautifully presented terraced home offers an exceptional opportunity for both discerning first-time buyers and savvy investors seeking strong long-term value.

The property boasts two generously proportioned double bedrooms, complemented by a spacious and well-appointed family bathroom featuring both a full-sized bathtub and separate shower. The ground floor offers two elegant reception rooms, providing versatile living spaces ideal for entertaining, relaxing, or modern family living.

Combining character, functionality, and superb convenience, this home is perfectly situated close to local amenities, transport links, and everyday essentials — delivering both lifestyle appeal and investment potential.

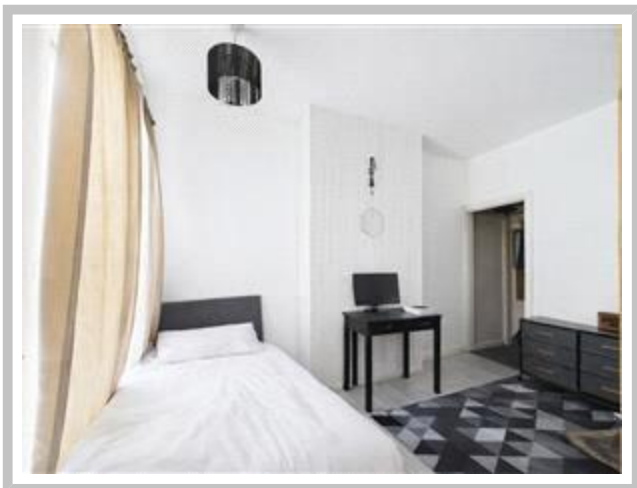
Opportunities such as this are rarely available for long. Contact us today to arrange your private viewing.

Council Tax Band: A (Leicester Council)

Tenure: Freehold

Garden details: Private Garden





TENURE: We have been advised by the Vendors the property is Freehold.

It is advised to have this information verified by your legal representative; we take no legal responsibility given by a vendor/seller of its accuracy. It was not possible to verify and obtain this information given by means of any current documentation.