

Bradley Drive, Hailsham



- Georgian Influenced
- Mansion Style Apartment
- Gas Central Heating
- Two Double Bedrooms
- Roebuck Park Estate
- Country Walks Available
- Turn Key Property
- Allocated Parking
- Lounge
- Viewing Advised



Leasehold

£200,000

Price Guide

2 BEDROOM 1 RECEPTION 2 BATHROOM 0 GARAGE

Bradley Drive, Hailsham

## Bradley Drive, Hailsham

---

### DESCRIPTION

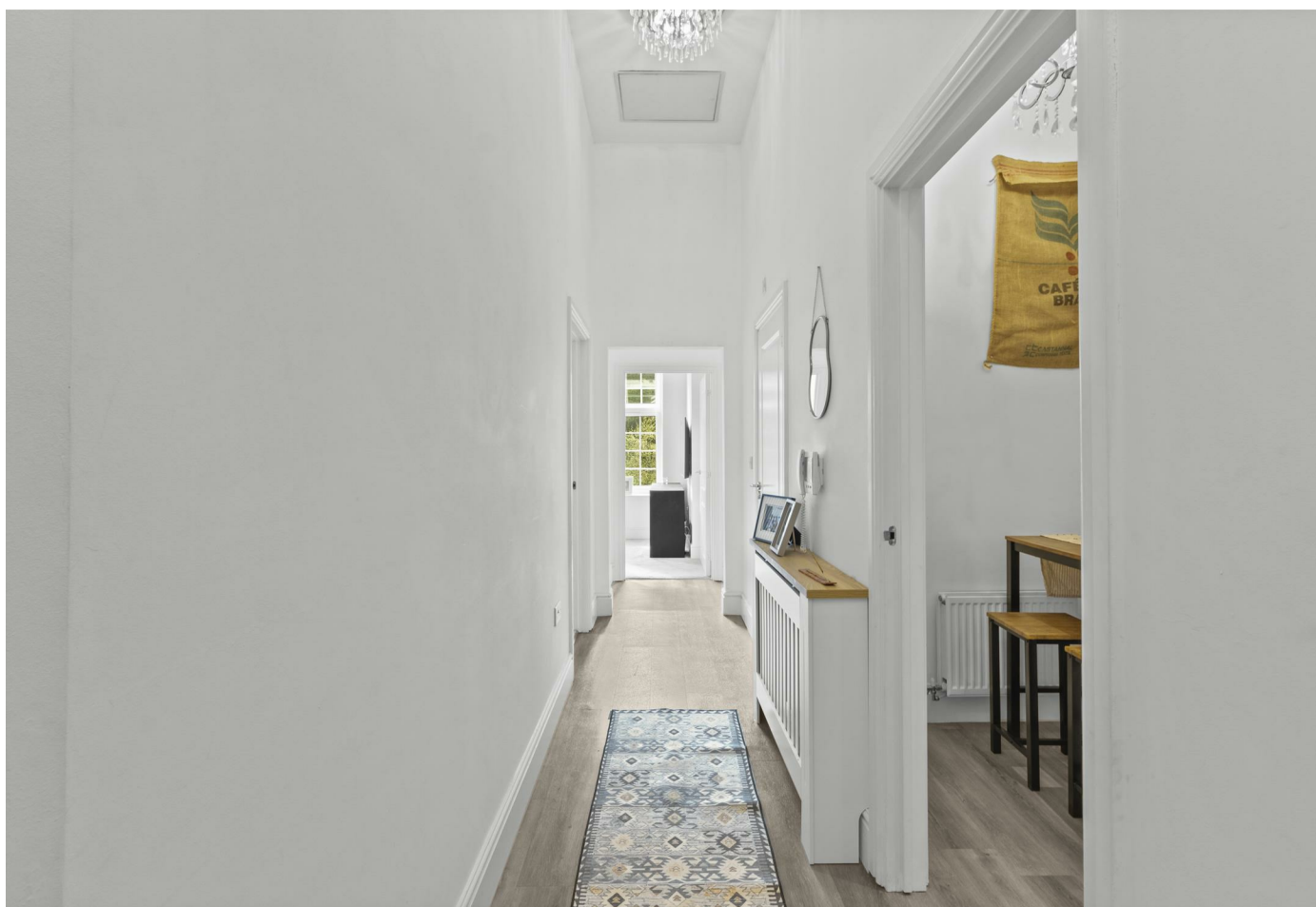
PRICE GUIDE £200,000 - £220,000 | 3D Virtual Tour | Gas Central Heating | Immaculately Presented | Picturesque Location | Two Bathrooms | Allocated Parking | Semi-Rural | Viewing Essential | Roebuck Park Estate | Georgian Influence.

Nestled in the charming area of Hellingly, Hailsham, this immaculately presented flat on Bradley Drive offers a delightful blend of modern living and classic elegance. Set within a Georgian influenced building, the property boasts two spacious double bedrooms, each thoughtfully designed to provide comfort and tranquility.

The flat features a welcoming reception room, perfect for relaxation or entertaining friends and family. The property is mains serviced, ensuring a reliable and efficient supply of utilities. Additionally, the allocated parking space, along with further visitor parking, adds to the convenience of this lovely home.

Residents will appreciate the picturesque surroundings of the Roebuck Park Estate, which offers beautiful country walks, ideal for those who enjoy the great outdoors. This property is not just a home; it is a lifestyle choice, combining the serenity of nature with the comforts of modern living.

Whether you are looking to downsize, invest, or find your first home, this flat presents an excellent opportunity in a sought-after location. Do not miss the chance to make this splendid property your own.



## Bradley Drive, Hailsham

---

Hallway 5.7 x 1.11 (18'8" x 3'7")

Kitchen 4.09 x 3.15 (13'5" x 10'4")

Shower Room 1.71 x 2.77 (5'7" x 9'1")

Bedroom One 2.62 x 3.89 (8'7" x 12'9")

En-Suite 2.05 x 1.43 (6'8" x 4'8")

Bedroom Two 3.75 x 2.74 (12'3" x 8'11")

Lounge 2.71 x 5.15 (8'10" x 16'10")

Allocated Parking