



Price

£1,500 PCM

Fees Apply



Available 09/05/26

Avenue Road
Dover CT16

Wards
Helping you move forwards



Main Features

- 3 / 4 bedroom terrace house
- Private courtyard garden
- Newly refurbished
- Sought after location
- Open house event
- Video tour available



Deposit required is £1,730.77
Dover District - Council Tax Band Tax Band C

Renting a property is a big commitment and we recommend that you visit the local authority website and these websites which offer helpful information and advice about letting

www.gov.uk/government/publications/how-to-rent

www.gov.uk/private-renting

www.wardsofkent.co.uk/letting/our-tenancy-fees/

www.gov.uk/green-deal-energy-saving-measures

Call Dover 01304 201109 ■ wardsofkent.co.uk

IMPORTANT INFORMATION: Please note that administration fees are charged in addition to the rent and security deposit. Please contact our Lettings Team who will confirm the total costs involved in renting this property. For clarification, we wish to inform the prospective tenant that we have prepared these details as a general guide. The agent has not carried out a detailed survey nor tested the services, appliances, or specific fittings (unless otherwise stated), and no warranty can be given as to their condition. All room measurements are taken at floor level. We strongly recommend that all the information which we provide about the property is verified by yourself and your advisers. The contents of this publication are © Wards, 2015. Wards is a trading name of Arun Estates Limited Registered in England No. 2597969

Accommodation

LOWER GROUND FLOOR

Lounge: 3.03m x 4.00m 9'11" x 13'1"

Kitchen / Dining Room: 3.81m x 4.00m 12'6" x 13'1"

Utility

WC

UPPER GROUND FLOOR

Bedroom 3: 3.07m x 2.98m 10'1" x 9'9"

Hall

Study / Bedroom 4: 2.10m x 2.16m 6'11" x 7'1"

Bathroom: 3.98m x 1.74m 13'1" x 5'8"

FIRST FLOOR

Bedroom 1: 3.89m x 3.85m 12'9" x 12'8"

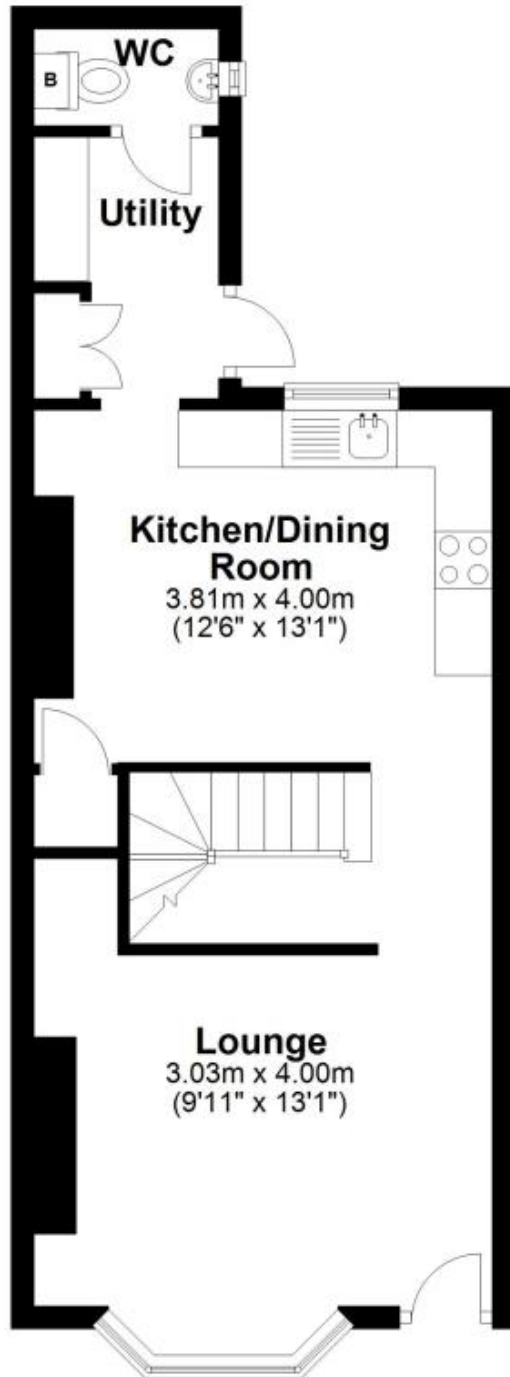
Landing

Bedroom 2: 3.42m x 4.00m 11'3" x 13'1"



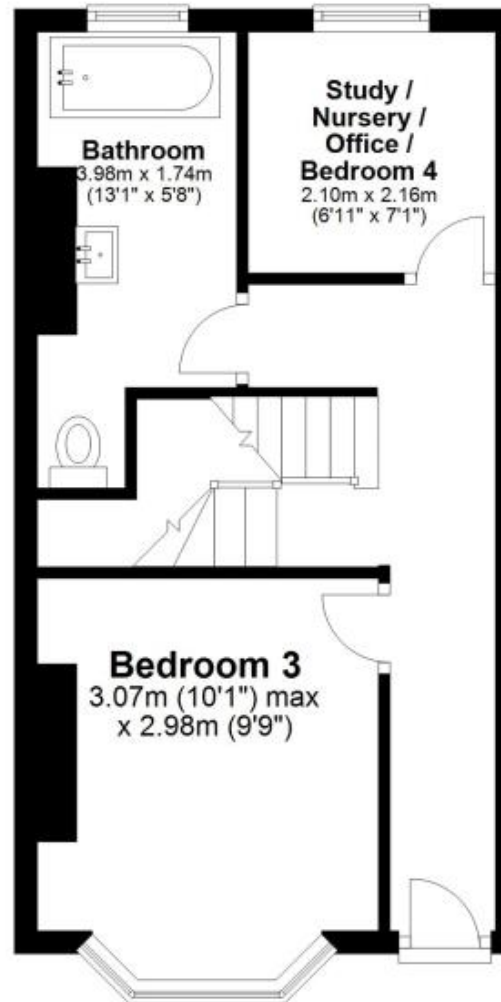
Lower Ground Floor

Approx. 36.8 sq. metres (396.3 sq. feet)



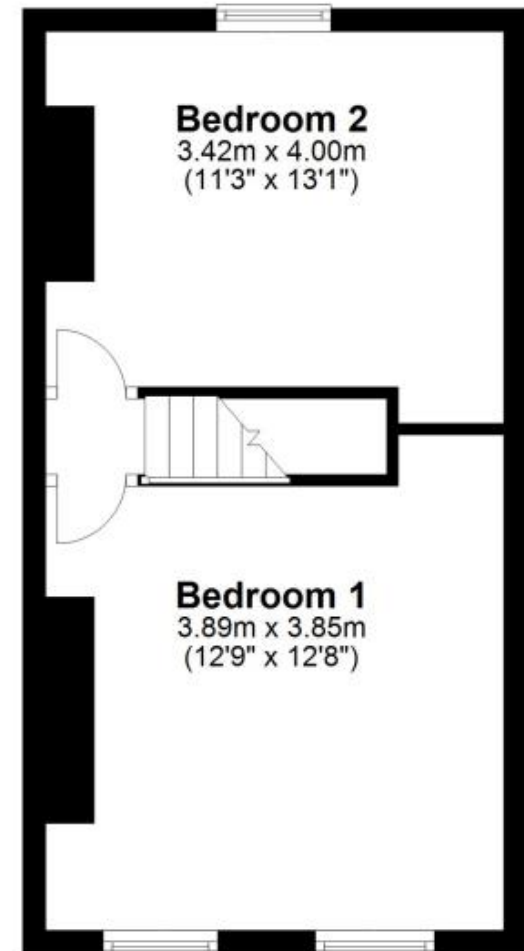
Upper Ground Floor

Approx. 33.4 sq. metres (359.5 sq. feet)



First Floor

Approx. 31.1 sq. metres (334.5 sq. feet)



Total area: approx. 101.3 sq. metres (1090.3 sq. feet)