



Flat 32, Netherwood Chambers 1A Manor Row, Bradford, BD1 4PB
Asking Price £45,000

APPLIANCE & SERVICES HAVE NOT BEEN TESTED

This is a one bedroom flat which comprises of an entrance hallway, large lounge with a separate galley kitchen. A well proportioned bedroom and a bathroom that has a shower over the bath.

Netherwood Chambers is conveniently situated very close to Forster Square train station, making it ideal if people need to commute to neighbouring towns for work.

Locate
The Property Experts

Locate Properties UK LTD

29-31 North Parade, Bradford, West Yorkshire, BD1 3JL

t. +44 (0) 01274 720 900

 @locatehomesbfd

e. info@locatehomes.co.uk



www.locatehomes.co.uk

Registered in England & Wales No. 5161728

LIVING ROOM

20'11" x 14'0" (6.39 x 4.28)



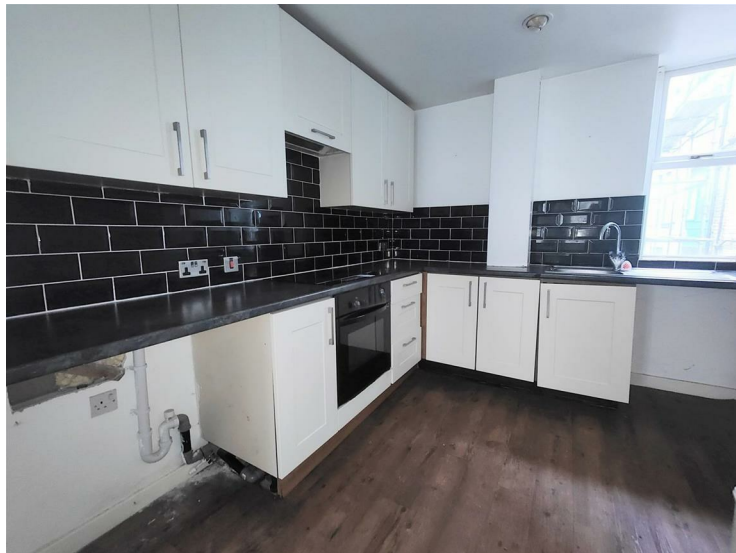
BEDROOM

17'4" x 11'11" (5.29 x 3.64)



KITCHEN

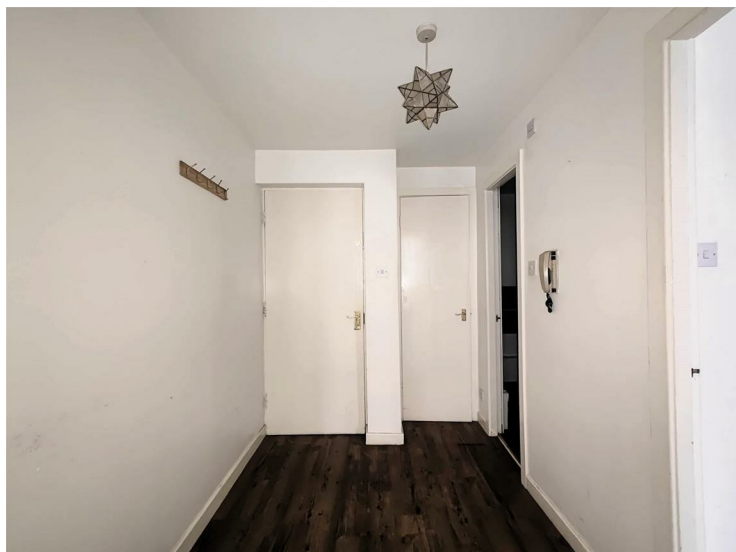
10'9" x 7'11" (3.3 x 2.42)



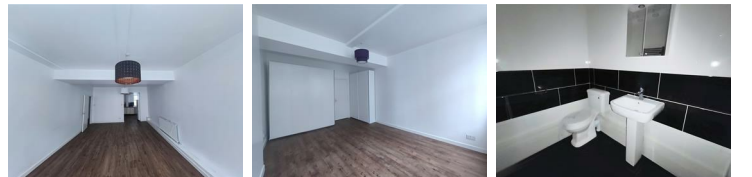
BATHROOM

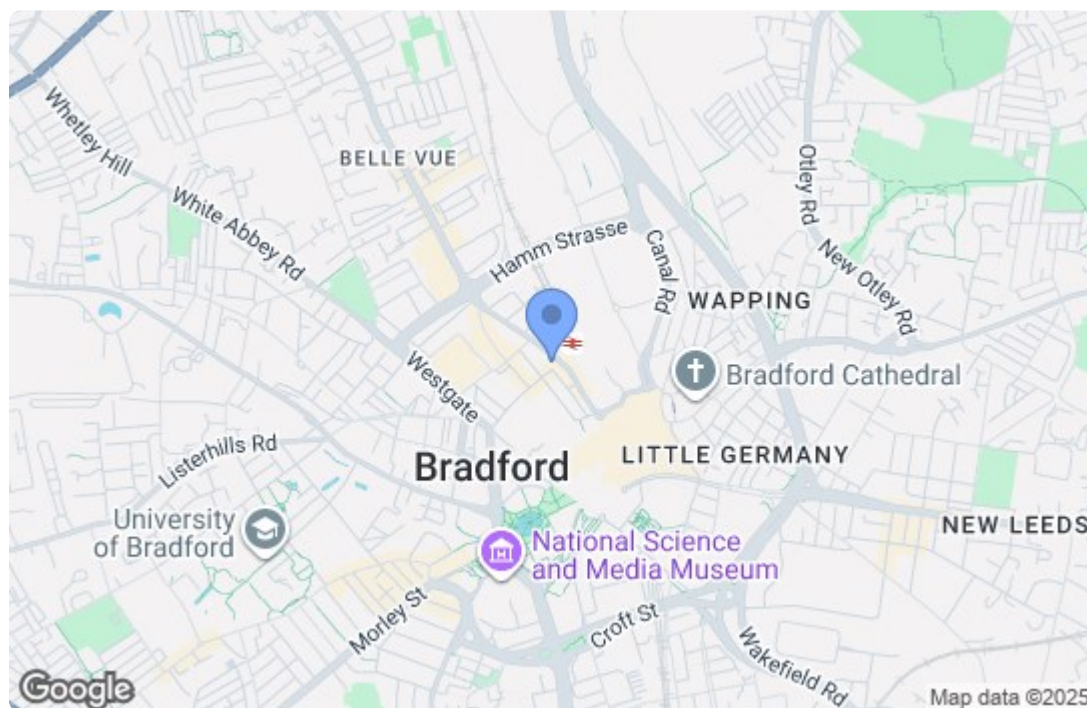


HALLWAY / ENTRANCE



ANGLE TWO





Energy Efficiency Rating		
	Current	Potential
Very energy efficient - lower running costs		
(92 plus) A		
(81-91) B		
(69-80) C		
(55-68) D		
(39-54) E		
(21-38) F		
(1-20) G		
Not energy efficient - higher running costs		
	75	82
England & Wales		EU Directive 2002/91/EC
Environmental Impact (CO ₂) Rating		
	Current	Potential
Very environmentally friendly - lower CO ₂ emissions		
(92 plus) A		
(81-91) B		
(69-80) C		
(55-68) D		
(39-54) E		
(21-38) F		
(1-20) G		
Not environmentally friendly - higher CO ₂ emissions		
England & Wales		EU Directive 2002/91/EC